



HOMES BY VICTORIA
ESTATE AGENCY

The Lodge, Alcester Road, Studley, B80 7NY

Offers Over £510,000

🛏 5 🚗 3 🛋 2



CHECK IT OUT £15,000 REDUCTION - Step Inside and Be Inspired – Welcome to “The Lodge” at 166B Alcester Road - Set back from the main road and gazing across open fields, this exceptional five-bedroom detached family home delivers the perfect balance of countryside charm and contemporary style. From the moment you step inside, The Lodge embraces you with a warm, welcoming atmosphere and a standard of finish that’s impossible to ignore.

homesbyvictoria.co.uk

victoria@homesbyvictoria | 07833 136521

FOR M HOMES MIDLANDS LIMITED trading as Homes By Victoria Company Number: 13688840 VAT no: 470190115



HOMES BY VICTORIA
ESTATE AGENCY



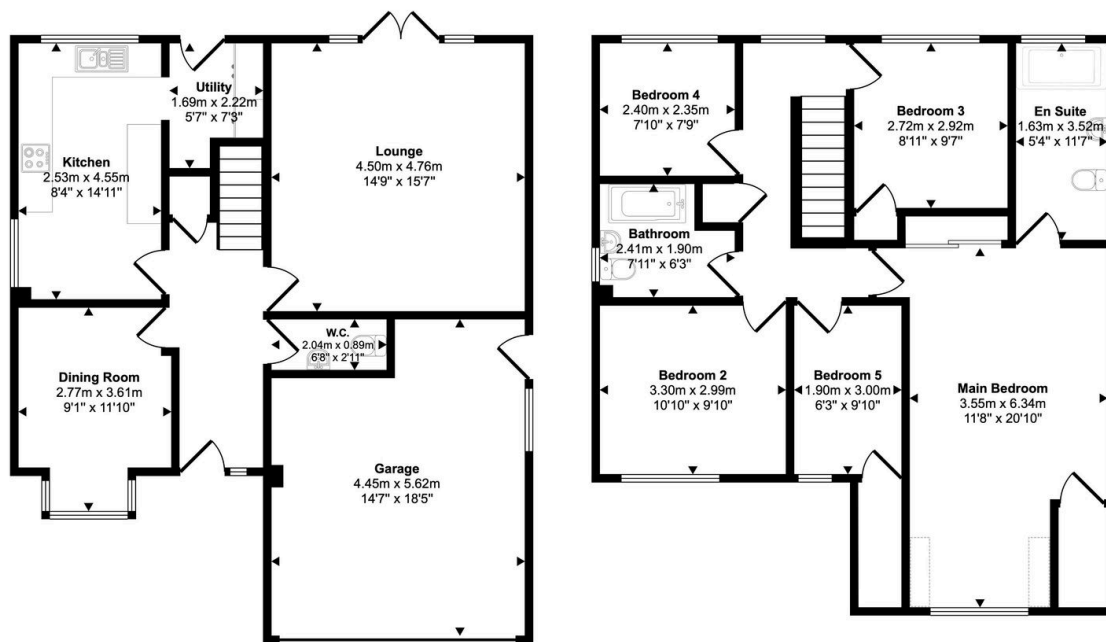
HOMES BY VICTORIA

ESTATE AGENCY

Key Features


- STEP INSIDE AND BE INSPIRED
- SOUGHT AFTER VILLAGE LOCATED OF STUDLEY
- BREAKFAST KITCHEN AND UTILITY
- FAMILY BATHROOM
- IMMACULATE REAR GARDEN
- STAND-OUT FIVE BEDROOM DETACHED FAMILY HOME
- TWO RECEPTION ROOMS
- FABULOUS SIZED MASTER BEDROOM AND EN-SUITE
- TASTEFULLY DECORATED THROUGHOUT
- DOUBLE GARAGE AND GENEROUS DRIVEWAY

Approx Gross Internal Area
162 sq m / 1740 sq ft



Ground Floor
Approx 83 sq m / 888 sq ft

First Floor
Approx 79 sq m / 852 sq ft

 Denotes head height below 1.5m

This floorplan is only for illustrative purposes and is not to scale. Measurements of rooms, doors, windows, and any items are approximate and no responsibility is taken for any error, omission or mis-statement. Icons of items such as bathroom suites are representations only and may not look like the real items. Made with Made Snappy 360.