



WOODSTOCK GROVE FLAT 11 W12

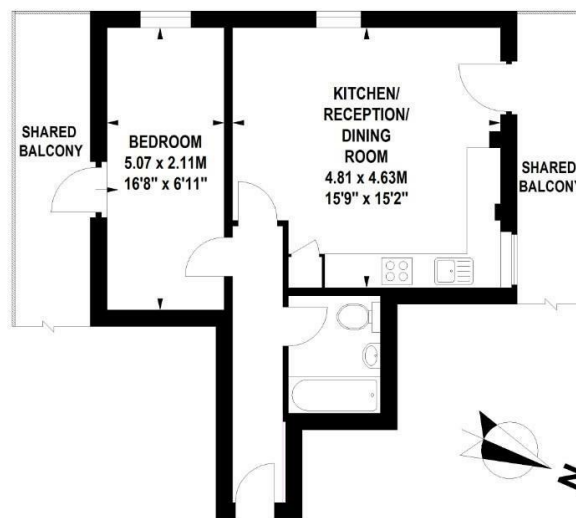




- SPACIOUS ONE BEDROOM FLAT • SECOND FLOOR • OPEN PLAN KITCHEN / LIVING AREA • MODERN BATHROOM • SHARED BALCONY • LOCATED MOMENTS FROM SHEPHERDS BUSH TUBE • FURNISHED • EPC RATING C • AVAILABLE 24TH JULY • COUNCIL TAX BAND B

Spacious one bedroom apartment with wooden floors throughout, full fitted kitchen and contemporary bathroom. Located on a quiet residential street just a few minutes walk from Westfield London and the transport links at Shepherds Bush. Furnished, available now. Council Tax band B. Available 24th July.

Woodstock Grove, W12
Approximate gross internal area
41 sq m / 441 sq ft



Second Floor

Floor Plan produced for Finlay Brewer by Mays Floorplans © . Tel 020 3397 4594
Illustration for identification purposes only, not to scale
All measurements are maximum, and include wardrobes and window bays where applicable

138 Shepherds Bush Road, London, W6 7PB
Tel: 020 7371 4071 lettings@finlaybrewer.co.uk