



Drayton Road, NW10

£550,000

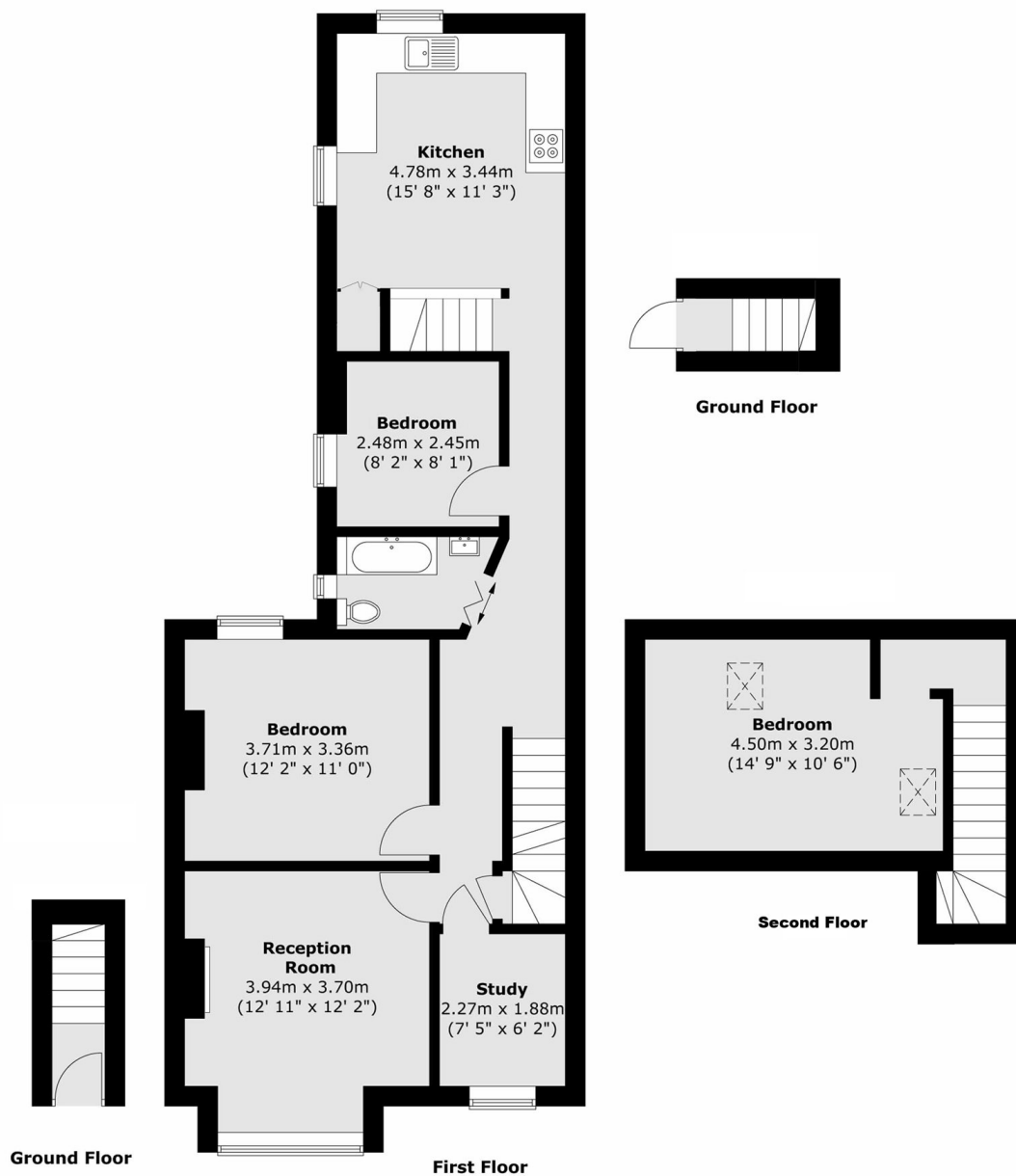
This top floor maisonette offers three bedrooms plus an additional office/study, a spacious separate kitchen with direct access to a private garden, a bright front reception with a bay window. The loft has been converted but can be improved to make more space.

Drayton Road is a quiet residential street, close to local shops, cafés, and the green open spaces of Roundwood Park. Transport links include Harlesden (Bakerloo Line) and Willesden Junction (Bakerloo Line & Overground), along with good bus routes and easy access to the A406 and A40.

Features

- Three Bedrooms
- Top Floor Floor
- Own Entrance
- Separate Kitchen
- Potential to Further Improve
- Chain Free

Drayton Road, London, NW10



Total area (approx.) : 93.9 sq. m (1011 sq. ft)