

BRENNAN

BESPOKE

£610,000

Ormond Place

Kettering, NN14 1JL

PROPERTY SUMMARY

Ormond Place is set within the village of Isham, positioned in a quiet cul-de-sac and offering a unique detached bungalow with generous single-level accommodation extending to over 2,000 sq ft. This is a rare opportunity for buyers seeking space, privacy, and the chance to modernise and refurbish throughout to create a home tailored to their own style and requirements, while benefiting from a layout that already lends itself well to flexible living.

The bungalow is arranged around a central hallway and provides a strong balance of reception and bedroom space. There is a spacious lounge, a separate dining room, and a fitted kitchen, along with a conservatory that adds an additional reception area overlooking the garden and offering further versatility for relaxing, entertaining, or family use. The accommodation includes multiple bedrooms, with the layout allowing for a range of uses such as guest rooms, home working, or hobby space, supported by bathroom facilities and useful storage throughout. A utility room adds further practicality, keeping day-to-day tasks separate from the main living areas.

Externally, the property benefits from a double garage, providing secure parking and excellent storage, and the overall setting within a cul-de-sac adds to the sense of privacy and quiet. With its size, layout, and village location, this home offers clear potential for improvement and long-term value for buyers looking for a substantial bungalow project.

4



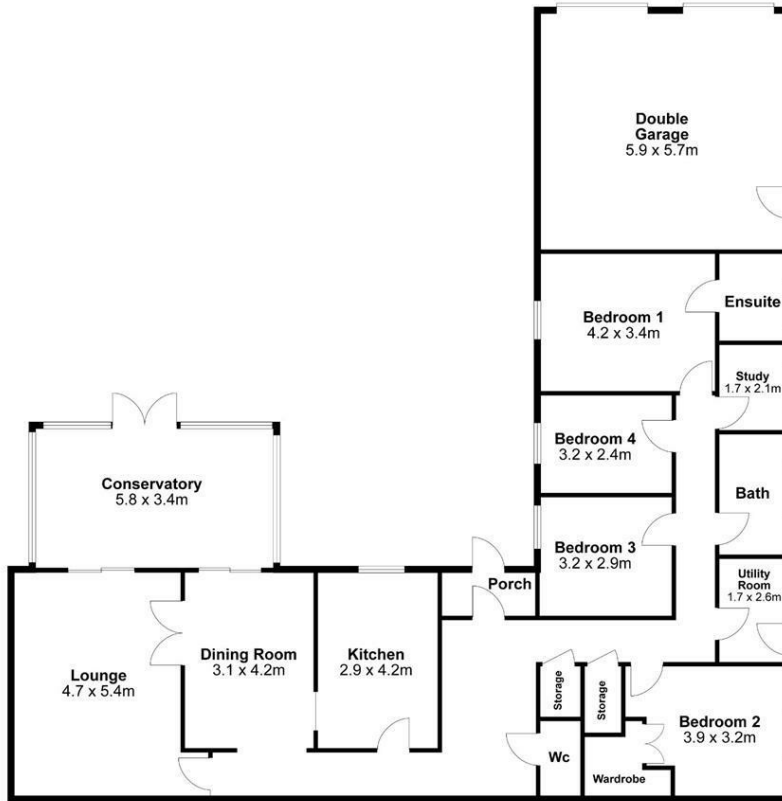
3



3







Internal Area Approx. : 196m²

BRENNAN
BESPOKE

For identification only not to scale

LOCAL AUTHORITY
North Northamptonshire

TENURE
Freehold

COUNCIL TAX BAND
F

VIEWINGS
By prior appointment only

Energy Efficiency Rating		Current	Potential
<i>Very energy efficient - lower running costs</i>			
(92 plus)	A		
(81-91)	B		
(69-80)	C		78
(55-68)	D	64	
(39-54)	E		
(21-38)	F		
(1-20)	G		
<i>Not energy efficient - higher running costs</i>			
England & Wales		EU Directive 2002/91/EC	

Agents Note: Whilst every care has been taken to prepare these particulars, they are for guidance purposes only. All measurements are approximate and are for general guidance purposes only and whilst every care has been taken to ensure their accuracy, they should not be relied upon and potential buyers/tenants are advised to recheck the measurements

BRENNAN
BESPOKE

OFFICE ADDRESS
BRENNAN BESPOKE
2 The Tithe Barn Glendon Lodge Farm
Glendon
Kettering
Northamptonshire
NN14 1QF

OFFICE DETAILS
01536 904400
info@brennanbespoke.co.uk
<https://www.brennanbespoke.co.uk>