



Denbigh Street, SW1V

£635,000

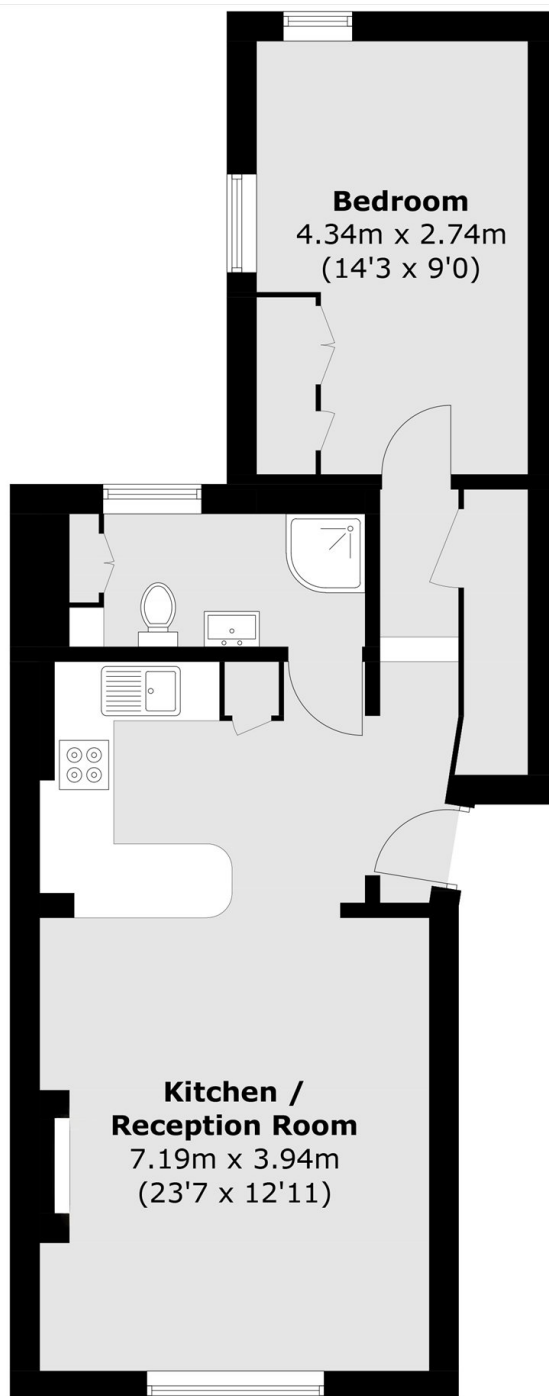
A spacious one double bedroom apartment on Denbigh Street with period features throughout. The open plan kitchen/reception room benefits from wood floors, high ceilings, large sash window and feature fireplace. This property would make a wonderful home.

Denbigh Street is located in the centre of Pimlico and has great transport links into the City and the West End. There are a range of local shops, cafés and restaurants close by on Lupus Street and Warwick Way.

Features

- One Double Bedroom
- Spacious Reception Room
- Open Plan Kitchen
- Good Storage Throughout
- Quiet Residential Street
- Excellent Location

Denbigh Street, London, SW1V



Total area (approx.): 50.5 sq. m (543.6 sq. ft)