



MASTER GUNNER PLACE, SE18

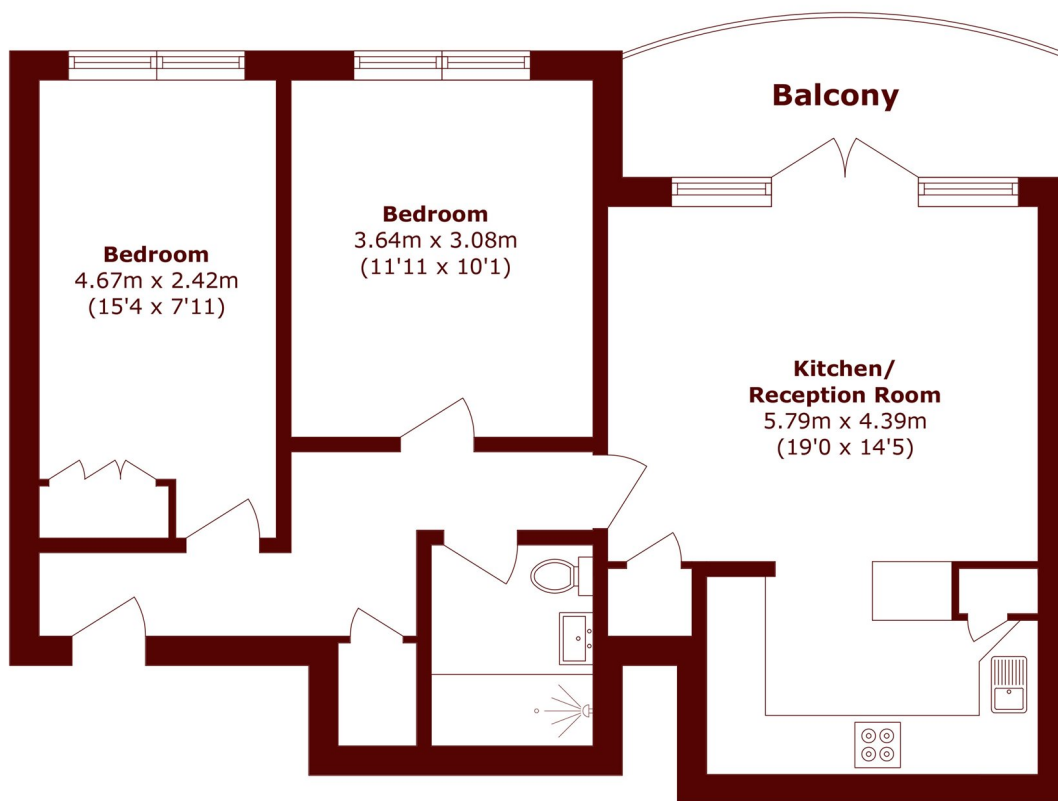
£1,750 PCM

A modern refurbished two bedroom apartment situated in Woolwich. An immaculately presented 8th floor apartment(58sqm, 624sqft) with terrace and some of the greatest views across the capital city anywhere in

Refurbished apartment
Two double bedrooms
Large living room

Parking
Sauna and gym facilities
Energy rating: C

STEP INSIDE MASTER GUNNER PLACE



Total area (approx.): 59.5 sq. m (640.4 sq. ft)

Balcony area (approx.): 7.0 sq. m (75.3 sq. ft)

Charlton
020 8293 0454

Energy Rating: C We aim to make our particulars both accurate and reliable. However, they are not guaranteed; nor do they form part of an offer or contract. If you require clarification on any points then please contact us, especially if you're traveling some distance to view. Please note that appliances and heating systems have not been tested and therefore no warranties can be given as to their good working order

**MARSH &
PARSONS**