



**Plot 77, The Drummond, Rose Place, Welshpool Road, Bicton Heath, Shrewsbury, SY3 5BU**  
£500,000



Plot 77, The Drummond, Rose Place, Welshpool Road, Bicton Heath, Shrewsbury,  
CV2 5DU  
**£500,000**

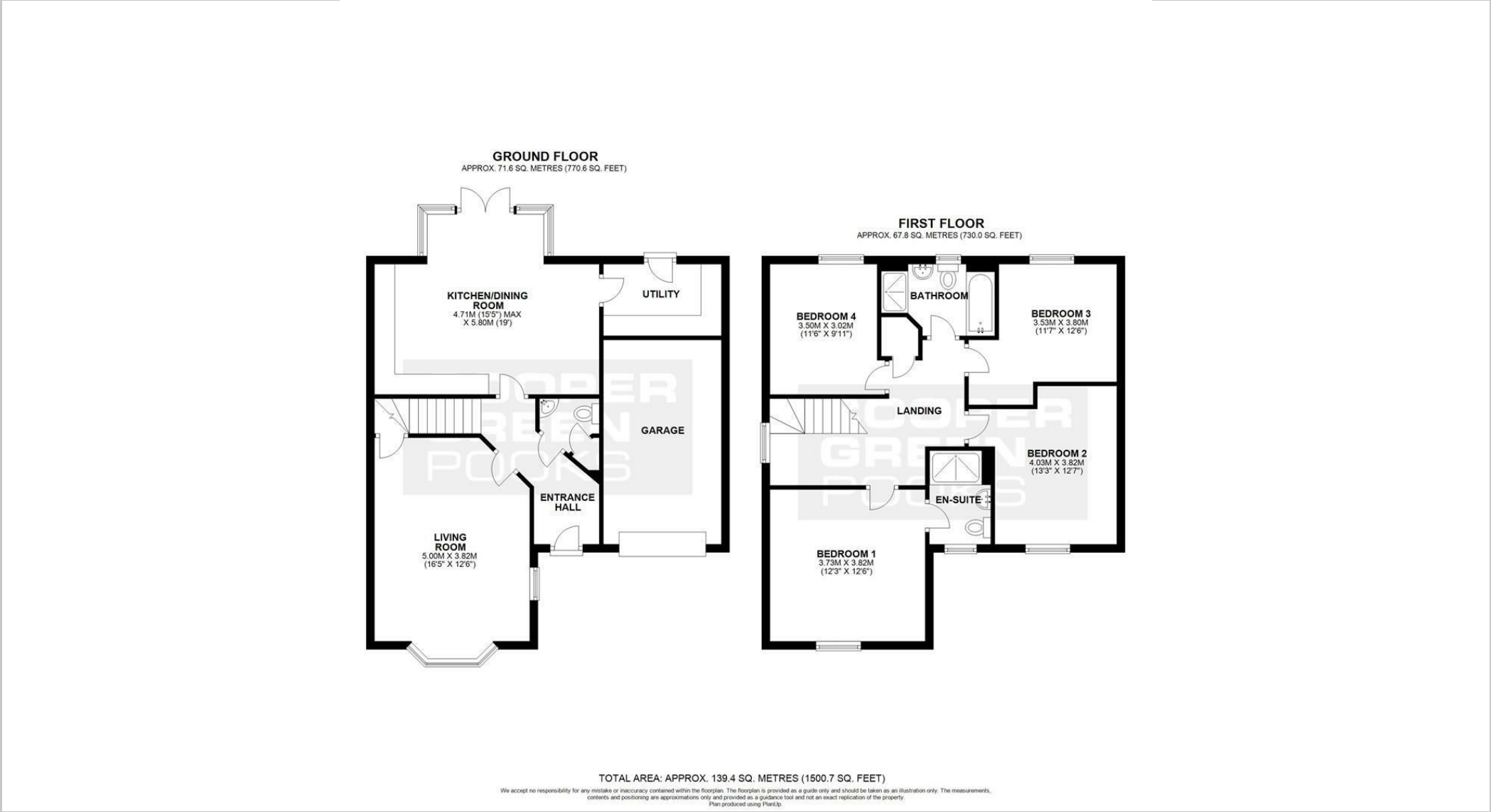
The Drummond is an attractive detached house with sash-style windows giving a traditional exterior, while inside it is designed very much for the modern family life. The expansive and thoughtfully designed layout provides practical accommodation, offering a pleasant place to relax within the bay fronted living room and the central hub of the house being the impressive kitchen/dining room.

## Description



null  
Council Tax Band: New Build  
Available:  
EPC:

# Floor Plans



These particulars, whilst believed to be accurate are set out as a general outline only for guidance and do not constitute any part of an offer or contract. Intending purchasers should not rely on them as statements of representation of fact, but must satisfy themselves by inspection or otherwise as to their accuracy. No person in this firm's employment has the authority to make or give any representation or warranty in respect of the property.