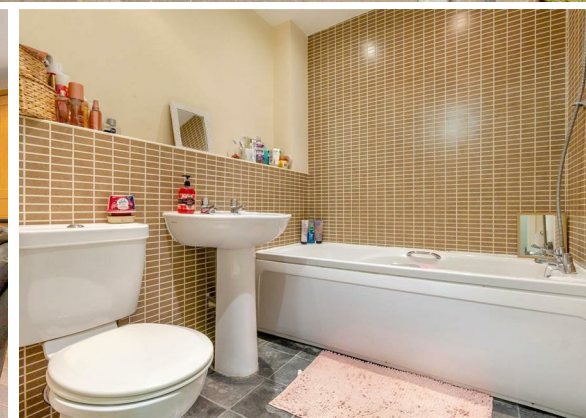




## 1 Bed Apartment

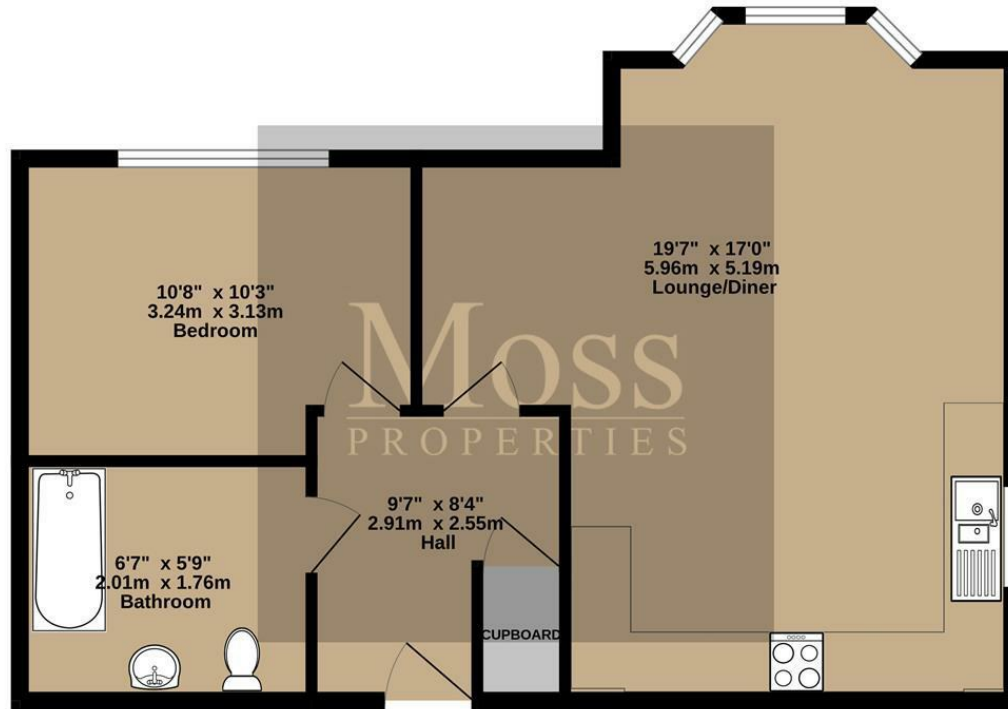
located in  
Sheraton Court,  
Doncaster

Offers In The Region Of  
£90,000



**Moss**  
PROPERTIES

FIRST FLOOR  
520 sq.ft. (48.3 sq.m.) approx.



DIRECTIONS

CONTACT

White Rose Way  
Doncaster  
South Yorkshire

E: info@mossspm.co.uk  
T: 01302 730077  
www.mossspm.co.uk

TOTAL FLOOR AREA: 520 sq.ft. (48.3 sq.m.) approx.  
Whilst every attempt has been made to ensure the accuracy of the floorplan contained here, measurements of doors, windows, rooms and any other items are approximate and no responsibility is taken for any error, omission or mis-statement. This plan is for illustrative purposes only and should be used as such by any prospective purchaser. The services, systems and appliances shown have not been tested and no guarantee as to their operability or efficiency can be given.  
Made with Metropix ©2024

Energy Efficiency Rating		
	Current	Potential
Very energy efficient - lower running costs		
(92 plus) <b>A</b>		
(81-91) <b>B</b>		
(69-80) <b>C</b>	<b>80</b>	<b>80</b>
(55-68) <b>D</b>		
(39-54) <b>E</b>		
(21-38) <b>F</b>		
(1-20) <b>G</b>		
Not energy efficient - higher running costs		
<b>England &amp; Wales</b>	EU Directive 2002/91/EC	

Moss  
PROPERTIES