



St. Margarets Road, TW1

£2,995 Per calendar month

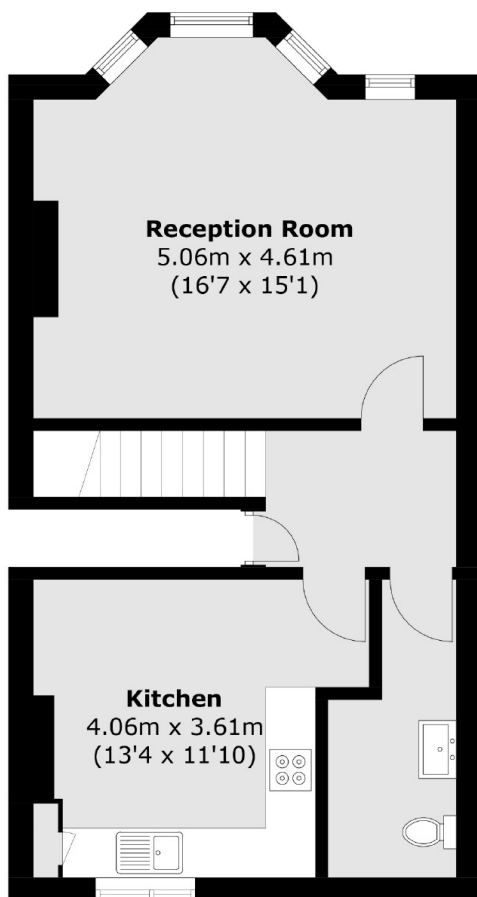
A two bedroom duplex apartment that has been finished to an exceptional standard throughout. With two en suite bathrooms, a downstairs WC and a bright and spacious living room with parquet flooring.

St Margarets Road provides access to a selection of bars/ restaurants, Richmond Bridge, the River Thames, the open spaces of Moor Mead Gardens and the historic Marble Hill Park.

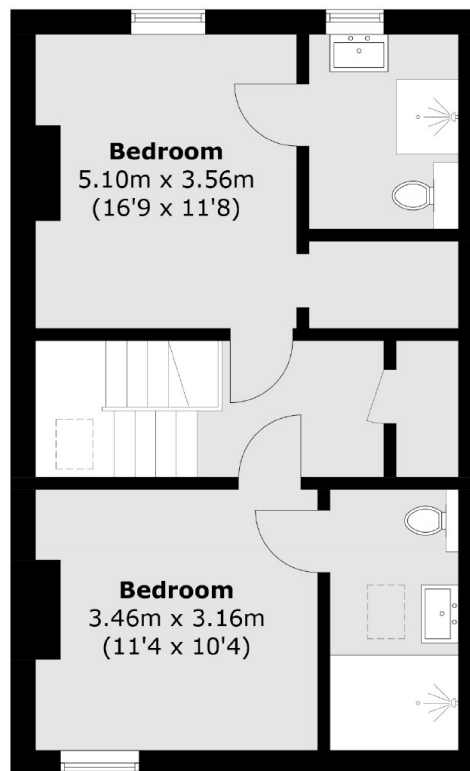
Features

- Two Double Bedrooms
- Two En Suite Bathrooms
- Walk In Wardrobe
- Split-Level
- Modern Fitted Kitchen
- Available Now

St. Margarets Road, St Margarets, TW1



First Floor



Second Floor

Total area (approx.): 90.9 sq. m (978.4 sq. ft)