

1
BED

Close to Martello Cafe and Splash Point!
Beach Hut 49, Esplanade, Seaford, BN25 1JJ



Offers In The Region Of
Freehold

phillipmann
we do more

www.phillipmann.com



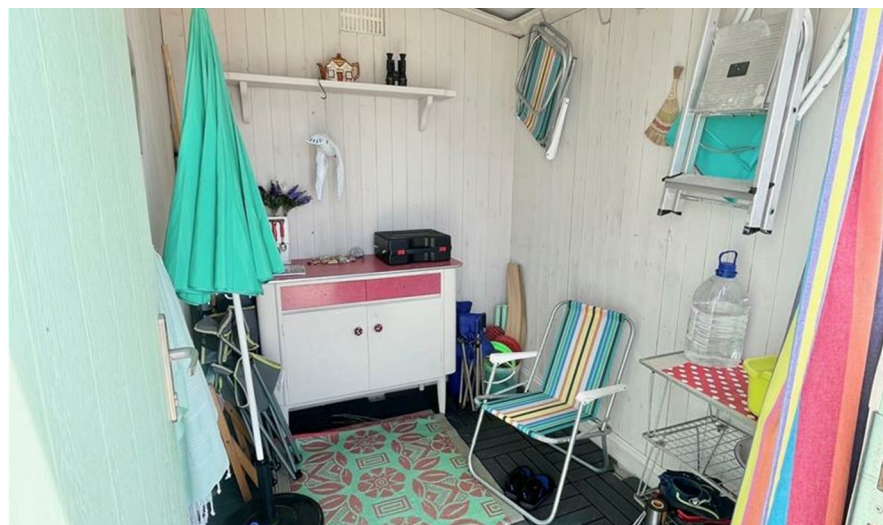
inbrief...

Phillip Mann estate agents are delighted to offer for sale this seafront Beach Hut of fibreglass construction measuring 8' x 6'4.

The hut is located on the Esplanade towards the eastern end of the promenade within short walking distance to: Seaford Museum, seafront cafe and toilets and cold water supply. Adjacent to the hut, the uncommercialised seafront offers free parking and is close proximity to Seaford Head Walks which offers panoramic views over Seaford Bay and an elevated view of the town.

Site Licence Fee £461.44 1st April 2023 - 31st March 2024

The seafront is home to an RSPB viewing point for the Kittiwakes at Splashpoint, two miles of undisturbed shingle beach (popular with families, fishermen and water sport enthusiasts), a promenade for relaxing walks or bike rides, Martello Tower which houses Seaford Museum and stretching round to Tide Mills at the far western end of the town which are the ruins of an old milling village. There is also a concession lease for Ice Cream Van at splashpoint (the far eastern end of the seafront, at the base of Seaford Head).



moreinfo...

Phillip Mann Seaford Office
1-3 Dane Road, Seaford, East Sussex, BN25 1LG
01323 898666

To see more details on this & all our homes go to
www.phillipmann.com

