






PINEHILL

Ascot | Berkshire



PRIME SOUTH-FACING FIVE BEDROOM PROPERTY

Situated within a plot of just under an acre on one of South Ascot's most sought after roads.

			EPC
5	5	5	D

Local Authority: Windsor and Maidenhead Borough Council
Council Tax band: H
Tenure: Freehold

Guide price: £3,950,000



A STUNNING, FULLY RENOVATED PROPERTY

Comprising over 6000sqft of meticulously designed interiors and five bedrooms. It also benefits from being centrally positioned within it's beautiful, lateral plot of 0.9 acres.

As you walk through the impressive entrance, you are greeted with a light filled hallway with views out onto the rear sunny garden. Across the ground floor there are several multi-purpose reception rooms, including a large separate utility room, all surrounding an exquisite central kitchen/living/dining area. The breakfast room has bi-fold doors leading out onto the expansive flagstone patio and private grounds beyond. The stunning Laura Ashley kitchen is fully fitted with a beautiful solid wood cabinets and Miele appliances; built-in coffee machine; two ovens plus microwave and steam oven; full-sized wine fridge as well as double height Neff fridge and freezer. Quartz counter tops offer plenty of workspace as well as encasing a large sink and "Quooker" style tap.



HIGH SPECIFICATION THROUGHOUT

Extending from the kitchen via the bi-folding doors, a newly-laid patio and manicured garden awaits. Offering exceptional space for entertaining, enjoying a peaceful moment to yourself, or a casual game of football, the garden is certainly a key feature of the property.

The surrounding reception rooms, including the cinema/media room, are pre-wired for full television automation speakers. Air source heat pumps supply underfloor heating throughout, with the added benefit of air conditioning servicing all bedroom suites on the first floor.

On the first floor there are five large bedroom suites, four of which are South-facing. The principle bedroom suite comes with a Clive Cristian super-king bed and bedside tables as well as a large dressing room leading onto an impressive bathroom with double sinks, walk in shower and corner bath finished off with large Italian format Onyx tiling. The high specification continues throughout with superior bathroom fittings and lighting installed across the entire floor.





LOCATION

A handsome walled entrance, with secure electric gates, leads onto a sweeping driveway offering ample parking for multiple cars in addition to a large double garage with fully tiled flooring.

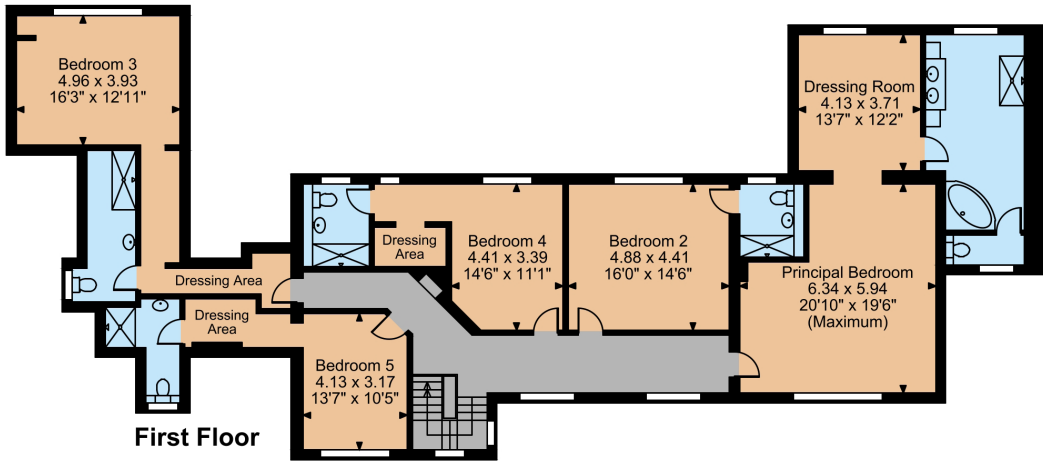
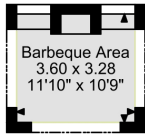
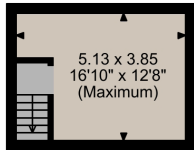
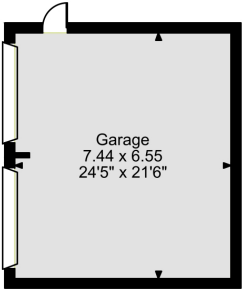
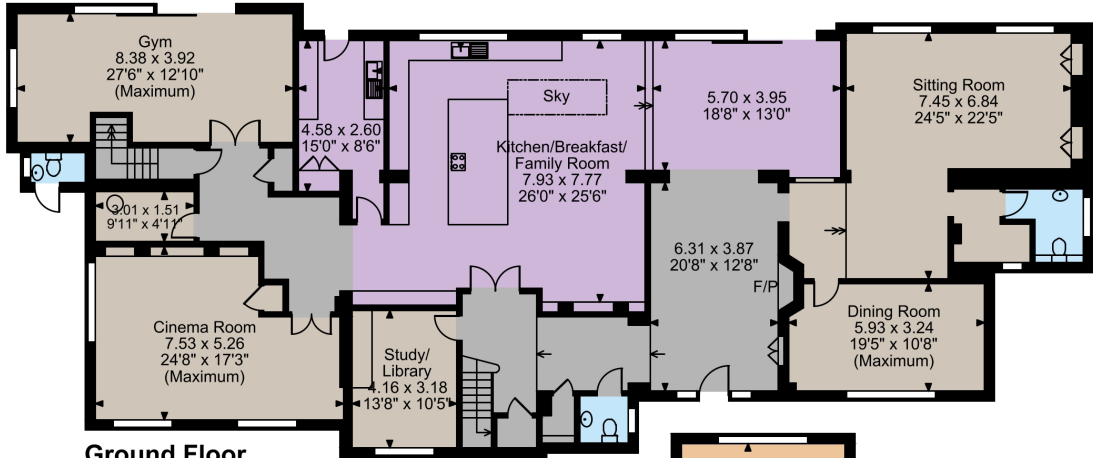
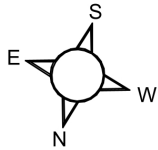
Pinehill is situated in the desirable Sunningdale, on one of the areas most well-regarded roads. Situated 0.7m from Sunningdale Station, along with a Waitrose supermarket and a selection of shops and eateries. Also within easy reach are Sunninghill and Ascot for more amenities. The towns of Windsor, Camberley, Guildford and Reading provide a further more extensive range of shopping facilities, in addition to theatre, cinema and leisure centres.

The area has a rural and leafy feel yet is perfectly positioned for easy access to the motorway network and rail services; M3, M4, M25 and Heathrow Airport.

There is excellent schooling in the local area including Charters School, St. George's, St Mary's, LVS Ascot, Papplewick and The Marist to name a few. Golf enthusiasts have access to an extensive number of golf clubs including; Sunningdale, The Berkshire, Swinley Forest and Wentworth. Tennis and health clubs, along with spa facilities can be found at Coworth Park, The Berystede, Foxhills and Pennyhill Park.



Pinehill Sunning Avenue, Sunningdale
Main House internal area 6,197 sq ft (576 sq m)
Garage internal area 525 sq ft (49 sq m)
Garden Shelter external area = 127 sq ft (12 sq m)
Total internal area 6,722 sq ft (624 sq m)
Quoted Area Excludes 'External W.C.'



FOR ILLUSTRATIVE PURPOSES ONLY - NOT TO SCALE

The position & size of doors, windows, appliances and other features are approximate only.
© ehouse. Unauthorised reproduction prohibited. Drawing ref. dig/8656576/NJD



Alex Hancock
+44 1344 293153
alex.hancock@knightfrank.com

Knight Frank Ascot & Virginia Water
59 High Street, Ascot
SL5 7HP

[knightfrank.co.uk](https://www.knightfrank.co.uk)



Your partners in property

1. Particulars: These particulars are not an offer or contract, nor part of one. You should not rely on statements given by Knight Frank in the particulars, by word of mouth or in writing ("information") as being factually accurate about the property, its condition or its value. Neither Knight Frank nor any joint agent has any authority to make any representations about the property, and accordingly any information given is entirely without responsibility on the part of Knight Frank. 2. Material Information: Please note that the material information is provided to Knight Frank by third parties and is provided here as a guide only. While Knight Frank has taken steps to verify this information, we advise you to confirm the details of any such material information prior to any offer being submitted. If we are informed of changes to this information by the seller or another third party, we will use reasonable endeavours to update this as soon as practical. 3. Photos, Videos etc: The photographs, property videos and virtual viewings etc. show only certain parts of the property as they appeared at the time they were taken. Areas, measurements and distances given are approximate only. 4. Regulations etc: Any reference to alterations to, or use of, any part of the property does not mean that any necessary planning, building regulations or other consent has been obtained. A buyer must find out by inspection or in other ways that these matters have been properly dealt with and that all information is correct. 5. Fixtures and fittings: A list of the fitted carpets, curtains, light fittings and other items fixed to the property which are included in the sale (or may be available by separate negotiation) will be provided by the Seller's Solicitors. 6. VAT: The VAT position relating to the property may change without notice. 7. To find out how we process Personal Data, please refer to our Group Privacy Statement and other notices at <https://www.knightfrank.com/legals/privacy-statement>.

Particulars dated July 2025. Photographs and videos dated July 2025. All information is correct at the time of going to print. Knight Frank is the trading name of Knight Frank LLP. Knight Frank LLP is a limited liability partnership registered in England and Wales with registered number OC305934. Our registered office is at 55 Baker Street, London W1U 8AN. We use the term 'partner' to refer to a member of Knight Frank LLP or an employee or consultant. A list of members names of Knight Frank LLP may be inspected at our registered office. If you do not want us to contact you further about our services then please contact us by either calling 020 3544 0692, email to marketing.help@knightfrank.com or post to our UK Residential Marketing Manager at our registered office (above) providing your name and address.

