



# Axminster Road

London, N7

Asking Price £350,000

The Drapery is a striking 1920s art deco building that was previously a department store, now sensitively converted into attractive apartments. The property is approximately 585 sq. ft and features a spacious open-plan living area, seamlessly integrating a modern fitted kitchen with ample room for dining, large windows that flood the space with natural light, a generously sized double bedroom complete with fitted wardrobes and a well-appointed family bathroom.



# Axminster Road

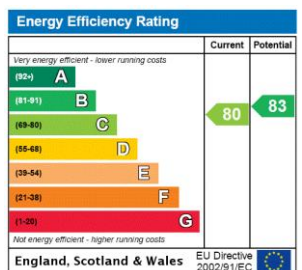
London, N7

- One Bedroom
- Excellent Location
- Close To Local Amenities
- Modern Kitchen
- Open Plan Living



Ideally located for the excellent shopping entertainment and transport links with a choice of Holloway Road (Piccadilly Line) Finsbury Park (Victoria Line/National rail) and Archway Station (Northern Line) underground stations. The green open spaces of Waterlow Park and Highgate are in close proximity.

**Tenure:** Leasehold with 113 years remaining.  
**Service Charge:** £2,507 P.A  
**Ground Rent:** £200 P.A  
**Local Authority:** Islington Council  
**Council Tax Band:** C

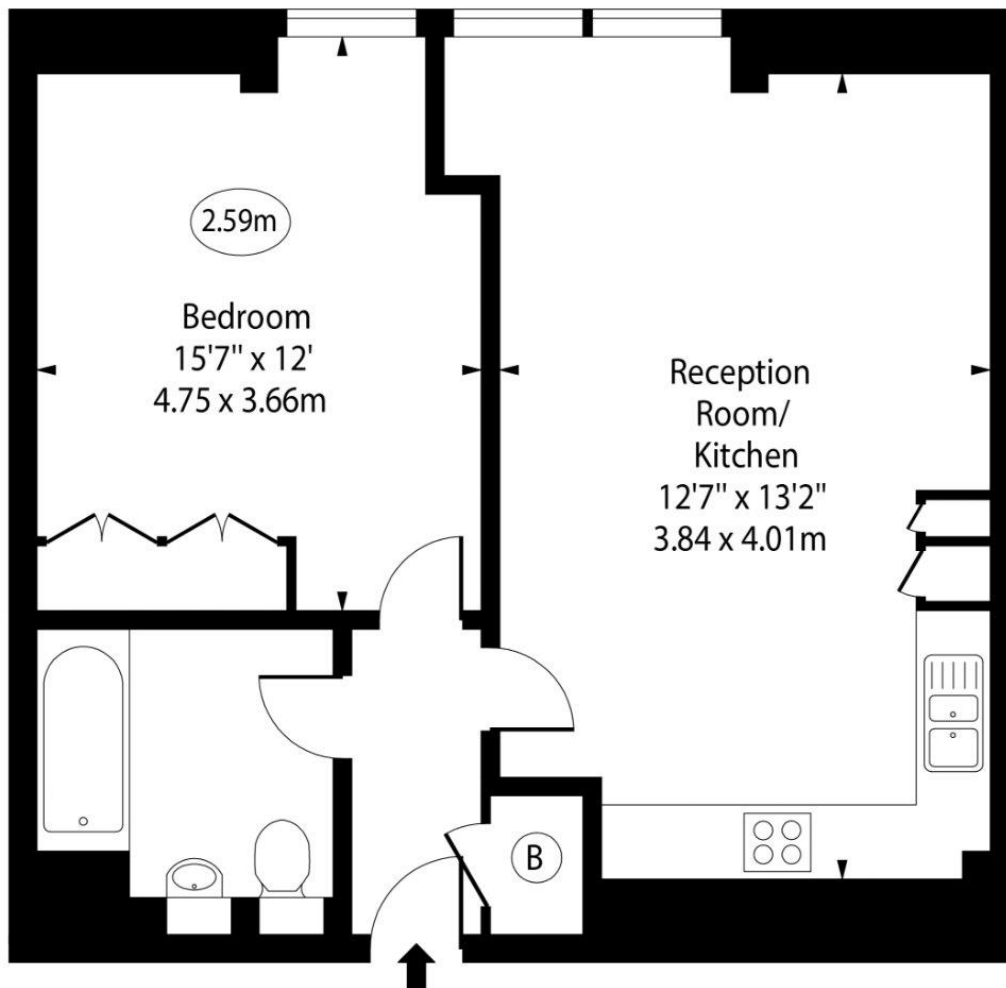


**Chestertons Camden & Kentish Town Sales**

99-101 Parkway  
 Camden  
 London  
 NW1 7PP  
 camden@chestertons.co.uk  
 020 7267 2053  
 chestertons.co.uk

# Axminster Road

○ - Ceiling Height



First Floor

Gross Internal Area - 588 Sq Ft - 54.63 Sq M

Approx Gross Internal Area      588 Sq Ft - 54.63 Sq M

For Illustration Purposes Only - Not To Scale

[www.goldlens.co.uk](http://www.goldlens.co.uk)

Ref. No. 025204E

