

The friendly & helpful estate agents.

ashleigh
stone



Cheltenham Drive, SS9 3EQ
4 Bedrooms
House
£620,000

To arrange a viewing
call 01702 480 666

ashleighstone.co.uk

FOR SALE

Cheltenham Drive, SS9 3EQ

£620,000

This beautifully presented four-bedroom semi-detached home offers the perfect balance of character, space and lifestyle, quietly positioned just north of the London Road in one of Leigh-on-Sea's most convenient residential settings. Combining generous proportions with elegant interiors and a wonderfully established west-facing garden, this is a home designed for modern family life whilst remaining effortlessly connected to everything that makes Leigh so desirable.

From the moment you arrive, the house has an immediate sense of warmth and presence. The attractive frontage, private driveway parking and attached garage provide practicality rarely found this close to the heart of town, whilst the charming bay-fronted façade hints at the character that continues throughout the property.

Inside, the accommodation flows beautifully. The front lounge is an inviting and sophisticated space, flooded with natural light from the large bay window and enhanced by soft tones, feature wallpaper and a striking fireplace that naturally draws people together. It is a room equally suited to relaxed evenings in or entertaining friends and family.

To the rear, the home opens into a wonderfully sociable dining and kitchen space that perfectly reflects the way families live today. The kitchen itself is sleek and contemporary with extensive cabinetry, integrated appliances and breakfast seating, whilst the dining area offers ample room for larger gatherings and opens directly onto the garden beyond. During the warmer months, doors to the rear encourage an effortless connection between inside and out, creating the ideal setting for summer dining, children playing on the lawn or simply unwinding as the afternoon sun moves across the garden.

The west-facing rear garden is a particularly appealing feature. Mature planting and established borders create a sense of privacy and greenery, whilst the generous lawn provides space for both entertaining and family life. The orientation means the garden enjoys the very best of the afternoon and evening sun - perfect for long summer evenings outdoors.

Upstairs, the property continues to impress with four well-proportioned bedrooms, including three genuine doubles. The principal bedroom enjoys elegant proportions and a beautiful bay window, whilst the additional bedrooms provide excellent flexibility for growing families, guest accommodation or those now seeking dedicated work-from-home space. The bathroom has been stylishly modernised with clean contemporary finishes and a calm, understated feel.

What makes this home especially compelling is the lifestyle its location provides. Positioned just north of the London Road, the property enjoys a quieter residential feel whilst remaining within easy reach of Leigh Broadway's vibrant cafés, restaurants and boutiques. Chalkwell and Leigh stations are both accessible for commuters into London, whilst the nearby seafront, beaches and Old Leigh provide the coastal backdrop that has made this area one of Essex's most sought-after places to live. Excellent local schools, parks and everyday amenities further enhance the appeal for families.

This is a home that manages to feel both connected and peaceful - offering space to grow, entertain and enjoy everything that life in Leigh-on-Sea has to offer.

To arrange a viewing of this super property call 01702 480 666
or send us an email to property@ashleighstone.co.uk

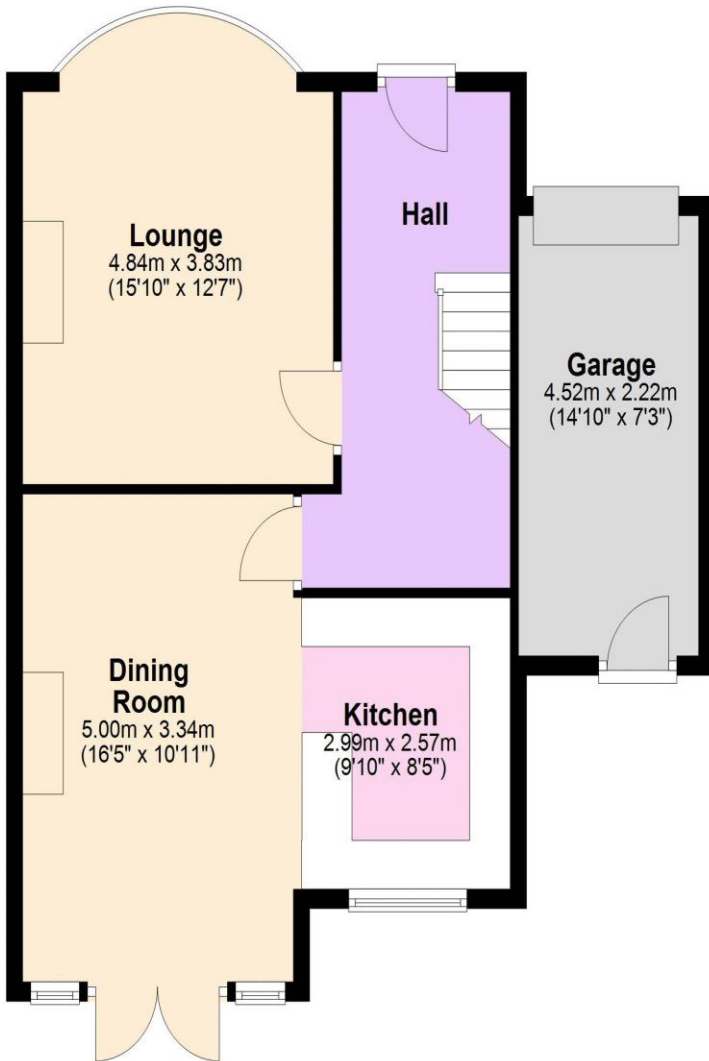


4 BEDROOMS / SEMI DETACHED HOUSE / OFF STREET PARKING & GARAGE/ WEST FACING GARDEN

Floor plans

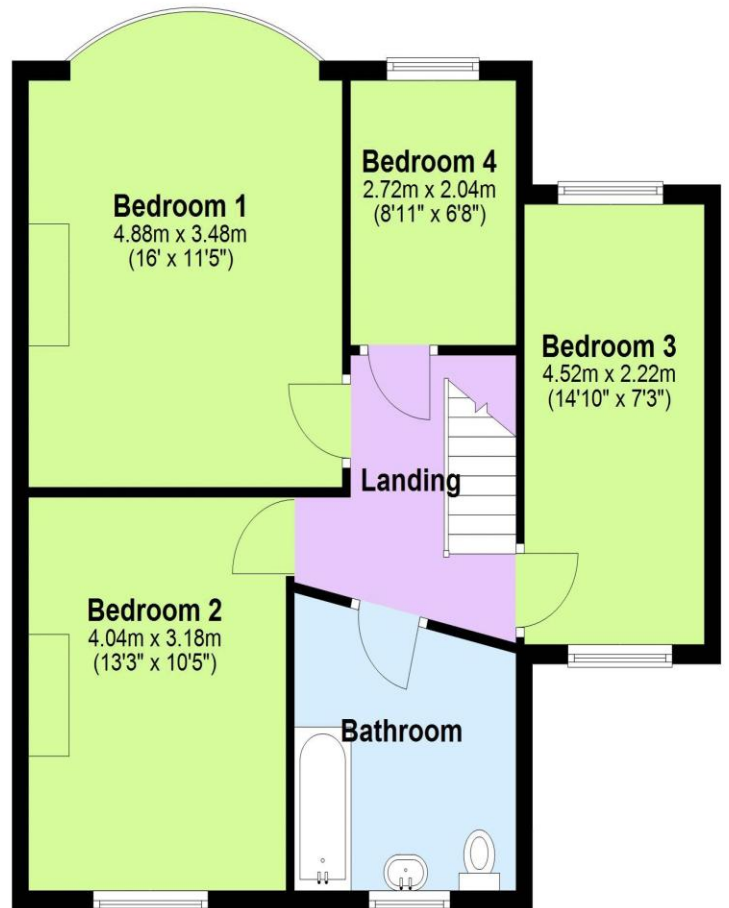
Ground Floor

Approx. 52.8 sq. metres (568.6 sq. feet)
(excluding Garage)



First Floor

Approx. 60.9 sq. metres (655.4 sq. feet)



Total area: approx. 113.7 sq. metres (1224.0 sq. feet)

ashleigh stone

107 Broadway, Leigh-on-Sea, Essex SS9 1PG
01702 480 666 / property@ashleighstone.co.uk

 facebook.com/ashleighstoneproperty