



Exonbury Walk | Cannock | WS11 6XL

£895 PCM



## Summary

Webbs Estate Agents are thrilled to present this spacious ground-floor apartment, offering the perfect blend of contemporary living and easy commutability. Situated in a popular location, this property has undergone a complete transformation, ensuring a modern and stylish living experience.

As you step through the front door, you are greeted by a spacious entrance hallway with storage, an inviting and spacious living area, with tasteful finishes, and flooded with natural light. The open-plan layout seamlessly connects the living, dining, and kitchen areas, creating a fluid and versatile space. The fully equipped kitchen boasts sleek cabinetry and stylish countertops. The two well-proportioned bedrooms offer comfortable retreats and the chic and modern shower room features contemporary fixtures and fittings.

One of the highlights of this property is its commutable location, ensuring easy access to public transportation and major commuting routes.

Additional features include a private courtyard rear garden and ample resident parking.

VIEWING ESSENTIAL TO FULLY APPRECIATE THE SIZE AND SPECIFICATION OF THIS STUNNING HOME.

## Key Features

## Rooms and Dimensions

### PROPERTY DETAILS:

#### Open Plan Living Space & Kitchen

25'9" max x 13'4" max (7.870 max x 4.067 max)

#### Bedroom One

13'8" x 8'8" (4.173 x 2.657)

#### Bedroom Two

13'7" x 8'8" (4.162 x 2.649)

#### Shower Room

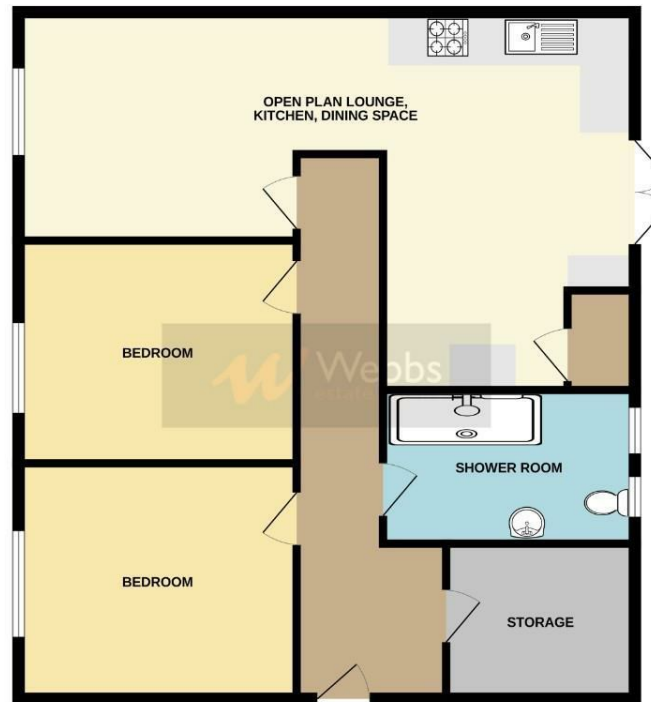
8'4" x 7'8" (2.562 x 2.350)

### TENANCY INFORMATION & IMPORTANT NOTES



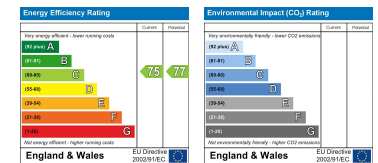


# GROUND FLOOR



Whilst every attempt has been made to ensure the accuracy of the floorplan contained here, measurements of doors, windows, rooms and any other items are approximate and no responsibility is taken for any error, omission or misstatement. This plan is for illustrative purposes only and should be used as such by any prospective purchaser. The services, systems and appliances shown have not been tested and no guarantee as to their availability or efficiency can be given.  
Made with Miroplan ©2024

Webbs Estate Agents - endeavour to maintain accurate depictions of properties in Virtual Tours, Floor Plans and descriptions, however, these are intended only as a guide and purchasers must satisfy themselves by personal inspection.



153 Avon Road, Cannock, WS11 1LF

Tel: 01543 468846 | Email: [sales@webbestateagents.co.uk](mailto:sales@webbestateagents.co.uk) | [www.webbestateagents.co.uk](http://www.webbestateagents.co.uk)

