



Bowden Street, SE11

£475,000

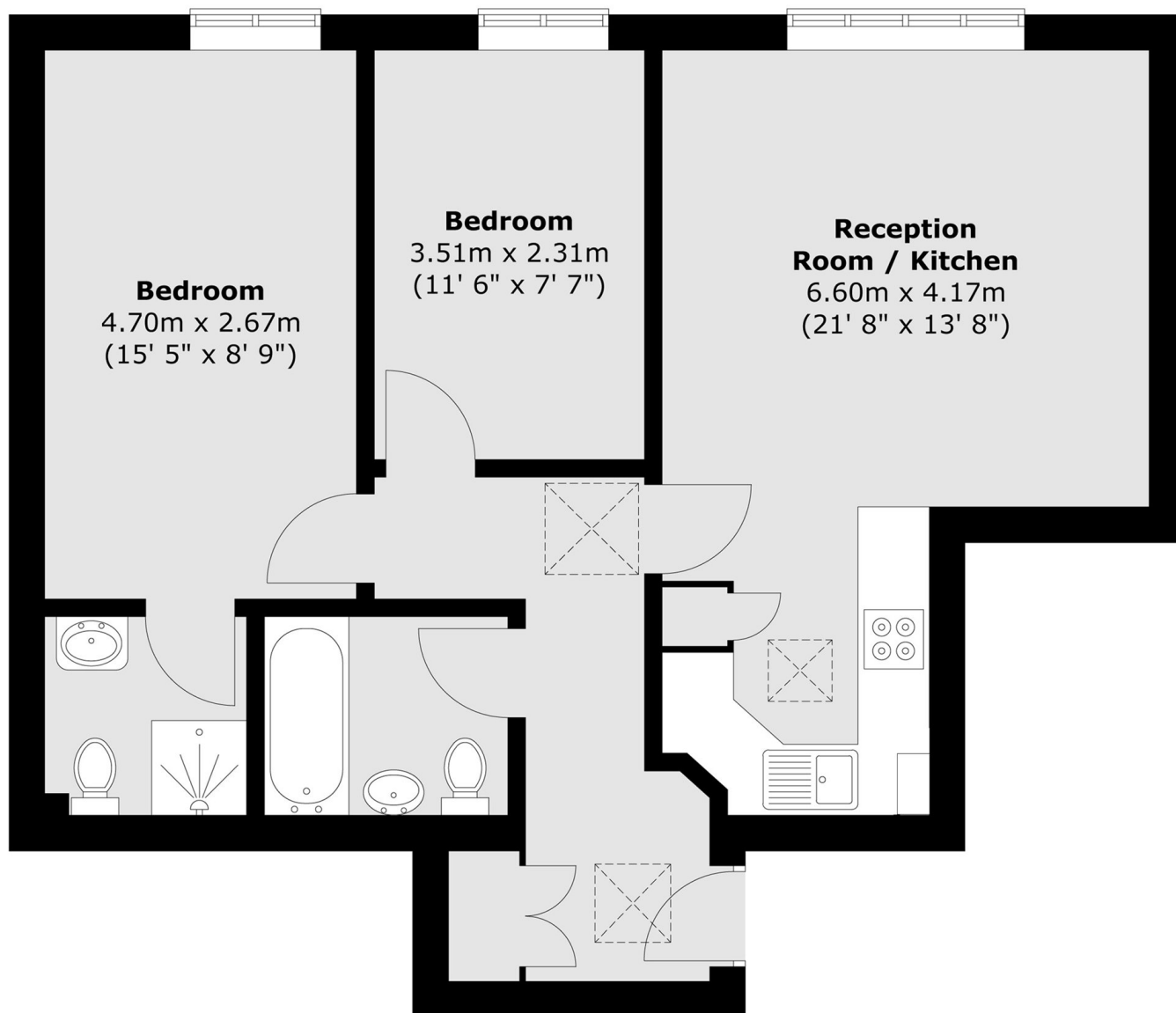
A superb two double bedroom, two bathroom top floor apartment being sold with no onward chain. Flooded with natural light and benefitting from a spacious reception room, good storage and bike storage. In good condition throughout and ready for the next buyer to make it their own.

Quietly tucked away just moments from pubs, eateries and local shops. High in community spirit, this perfect Kennington location has great access to transport links that are unbeatable with Kennington, Oval and Vauxhall stations close by, within a short stroll of Kennington Park and within easy reach of the City and West End.

Features

- Two Double Bedrooms
- Central Kennington Location
- No Onward Chain
- Two Bathrooms
- Bike Storage
- Purpose Built

Bowden Street, London, SE11



Total area (approx.) : 60.3 sq. m (649 sq. ft)