



Shirland Road

London, W9

£3,200 per month
(£738.46 per week)

SHORT LET A large one bedroom split level first floor apartment situated in a period conversion.

The property benefits from; a large reception with high ceilings; bathroom; separate fitted kitchen and a large double bedroom with good storage.

CHESTERTONS



Shirland Road

London, W9

- SHORT LET
- One bedroom
- Furnished
- First floor
- 668 SQFT

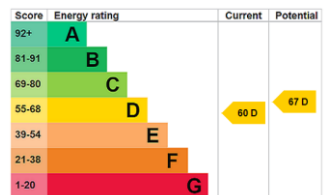


A large one bedroom split level first floor apartment situated in a period conversion.

The property benefits from; a large reception with high ceilings; bathroom; separate fitted kitchen and a large double bedroom with good storage. The flat is available on a furnished basis.

Shirland Road is an ideal location and offers easy access to Queens Park and the Paddington recreation ground. Nearest transport links include Westbourne Park (Hammersmith & City and Circle Line) and Queens Park (Bakerloo Line.)

Minimum Term: 1 months
Deposit Required: 4 weeks (subject to tenancy length)
Local Authority: City of Westminster
Council Tax Band: D
EPC Rating: D
Furnished



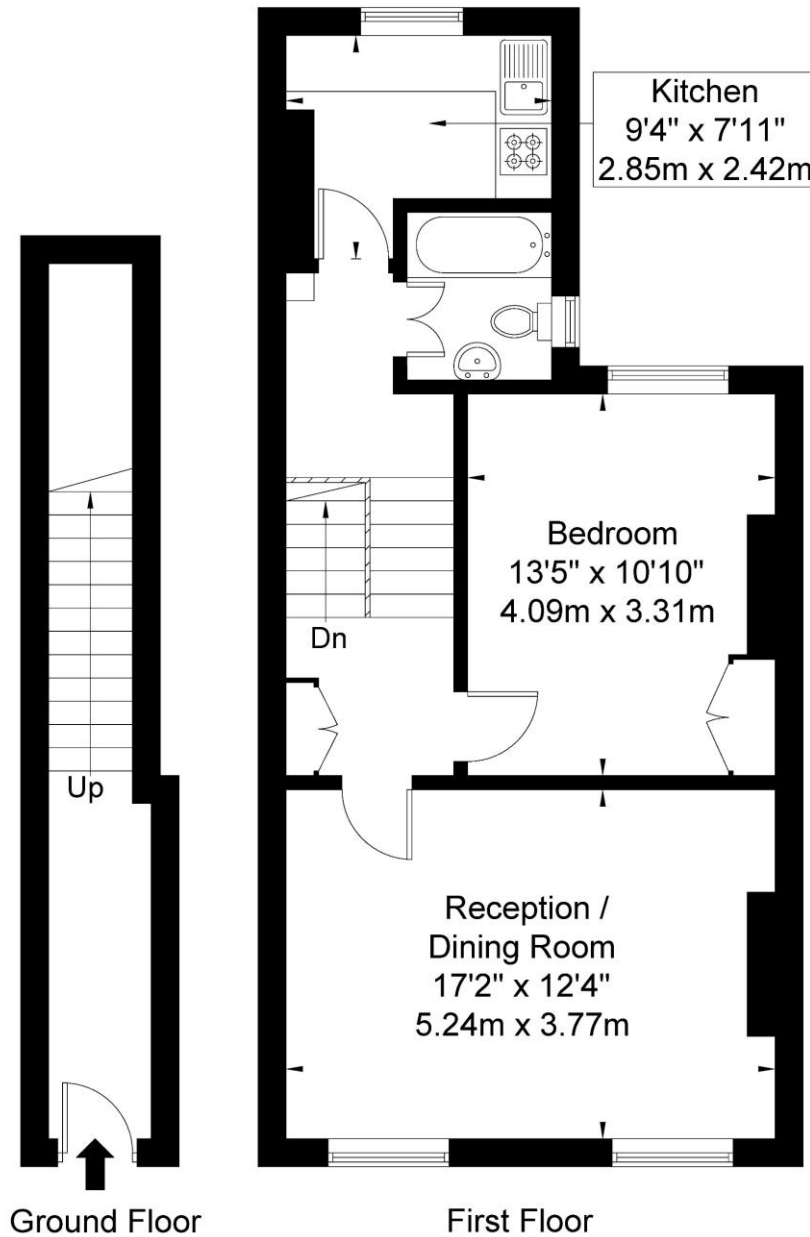
Chestertons Little Venice Lettings

26 Clifton Road
 Maida Vale
 London
 W9 1SX
 littlevenicelettingsusers@chestertons.co.uk
 02072662369
 chestertons.co.uk

Additional tenant charges apply (fees apply to non-AST tenancies only)
 Tenancy Agreement Fee: £300
 References per Tenant/Guarantor: £60
 Inventory check (approx. £100 – £250 inc. VAT)
chestertons.co.uk/property-to-rent/applicable-fees

Shirland Road, W9 3JW

Approx Gross Internal Area = 62.1 sq m / 668 sq ft



Ref

Copyright **BLEU PLAN**

The Floor plan is not to scale and measurements and areas shown are approximate and therefore should be used for illustrative purposes only. The plan has been prepared in accordance with the RICS code of Measuring Practice and whilst we have confidence in the information produced it must not be relied on. If there is any aspect of particular importance, you should carry out or commission your own inspection of the property.

Copyright @ BLEUPLAN

