



Hermitage Road, Earith, Huntingdon, PE28 3QD

Village Location - Semi-Detached Bungalow - 2 Bedrooms - Kitchen - Lounge/Diner - Bathroom - Front & Rear Gardens - Single Garage & Driveway Parking - Call To View - (01354) 696700

£245,000



Hallway
Double glazed entrance door, laminate flooring and doors to:

Kitchen
2.90m (9'6") x 2.86m (9'5")
Fitted with a matching range of base and eye level units with worktop space over, 1+1/2 bowl sink with tiled splashbacks, plumbing for dishwasher, space for fridge/freezer, space for gas range style cooker with extractor hood over, double glazed window to front, pantry cupboard and tiled flooring.

Lounge/Diner
4.98m (16'4") x 3.40m (11'2")
Double glazed window to front, single radiator and panelled feature wall.

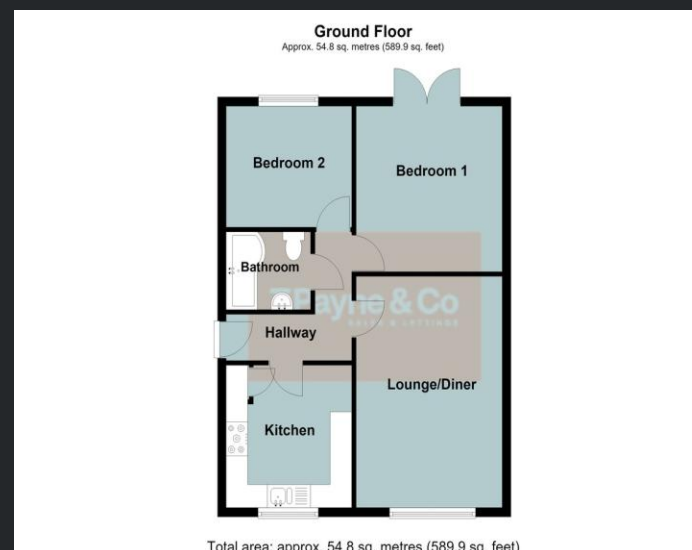
Bedroom 1
3.57m (11'8") x 3.40m (11'2")
Single radiator, laminate flooring, double glazed double doors to garden.

Bedroom 2
2.91m (9'7") x 2.61m (8'7")
Double glazed window to rear and single radiator.

Bathroom
Fitted with three piece suite comprising, P shaped panelled bath with separate shower over and shower curtain, pedestal wash hand basin and low-level WC, fully tiled walls, heated towel rail, extractor fan and tiled flooring.

Outside
There is a single garage with up and over door, window to rear and side door access from the rear garden and gated driveway parking. The front garden is laid to lawn with a side gate giving access to the enclosed rear garden which is laid to patio area and lawn with outdoor kitchen area, summer house and timber shed.

EPC Rating: C



Call to arrange a viewing **01354 696700** **T Payne & Co**
SALES & LETTINGS

Agents Notes: Whilst every care has been taken to prepare these sales particulars, they are for guidance purposes only. All measurements are approximate and for general guidance purposes only and whilst every care has been taken to ensure their accuracy, they should not be relied upon and potential buyers are advised to recheck the measurements.