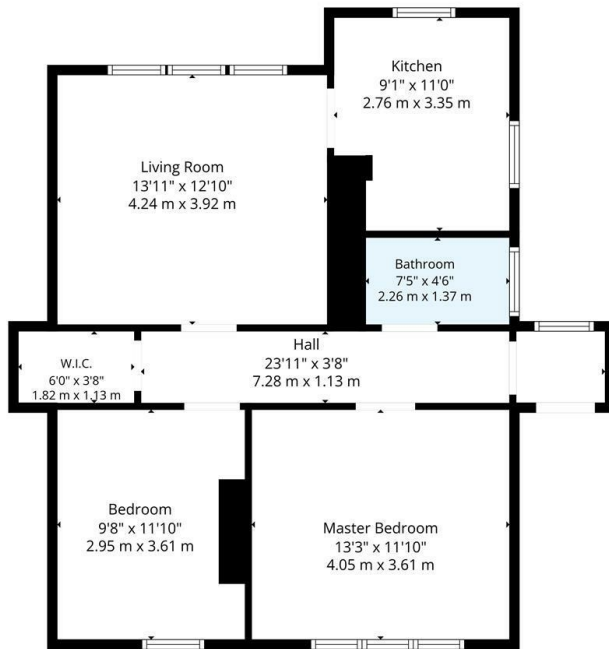




61 Hilton Terrace, Glasgow, G64 3EX

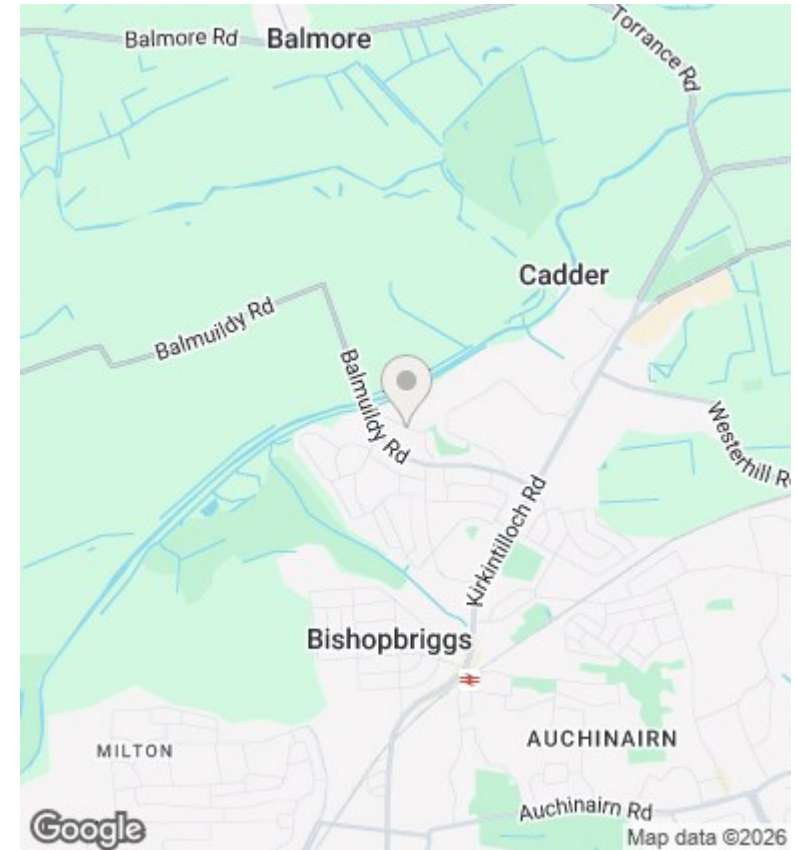
Fixed Asking Price £155,000

- Two bedroom upper flat
- Excellent presentation throughout
- Spacious lounge overlooking the rear garden
- Quiet Location
- Modern kitchen
- EER Band D
- Large private garden to the rear
- Modern Shower room



TOTAL: 729 sq. ft, 68 m²
 1st floor: 729 sq. ft, 68 m²
 EXCLUDED AREAS: WALLS: 63 sq. ft, 6 m²

Floor Plan Created By Cubicase App. Measurements Deemed Highly Reliable But Not Guaranteed.



Directions

Viewings

Viewings by arrangement only. Call 01417262111 to make an appointment.

Council Tax Band

EPC Rating:

D

