



Flat 9, Oakside Court Fencepiece Road, Ilford

Ilford

Guide Price £350,000



BOWDEN  
BRADLEY



## Flat 9

Oakside Court Fencepiece Road, Ilford

Oakside Court on Fencepiece Road, Barkingside, this delightful second-floor flat offers a perfect blend of comfort and convenience. With two well-p...

Council Tax band: TBD

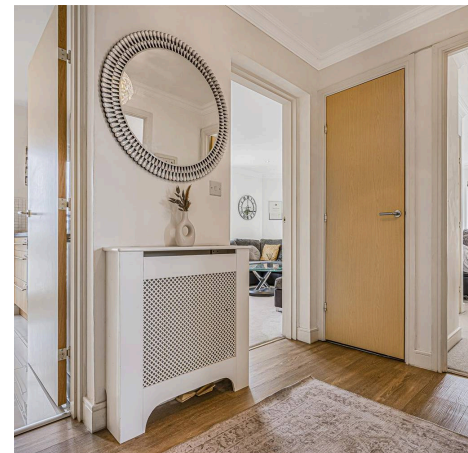
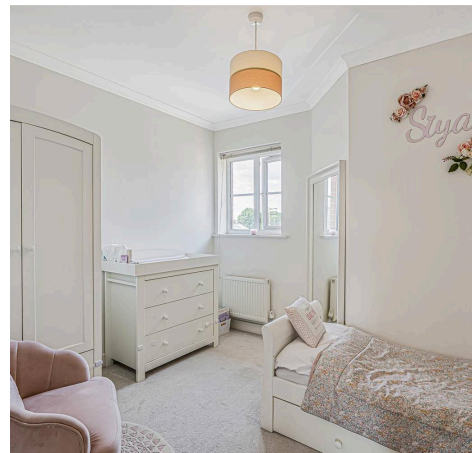
Tenure: Leasehold

EPC Energy Efficiency Rating: C

EPC Environmental Impact Rating: C

- Guide Price £325,000 - £350,000
- 2 Bedroom 2nd Floor Flat
- Close to Fairlop Station
- Easy Access to Barkingside High Street
- En suite to Main Bedroom
- Modern Kitchen and Bathroom
- Access to Loft for Storage
- Allocated Parking Space
- Fairlop Waters Close by
- Secure Gated
- Popular Oakside Court Development

**B**  
**BOWDEN**  
**BRADLEY**





**Front**

**Hallway**

**Kitchen**

Dimensions: 3.58 x 2.82 (11'8" x 9'3" ).

**Bathroom**

Dimensions: 2.17 x 2.9 (7'1" x 9'6" ).

**Bedroom**

Dimensions: 3.07 x 2.9 (10'0" x 9'6" ).

**Living Room**

Dimensions: 6.45 x 3.41 (21'1" x 11'2" ).

**Bedroom**

Dimensions: 5.54 x 4.1 (18'2" x 13'5" ).

**Shower Room**

Dimensions: 2.23 x 2.9 (7'3" x 9'6" ).

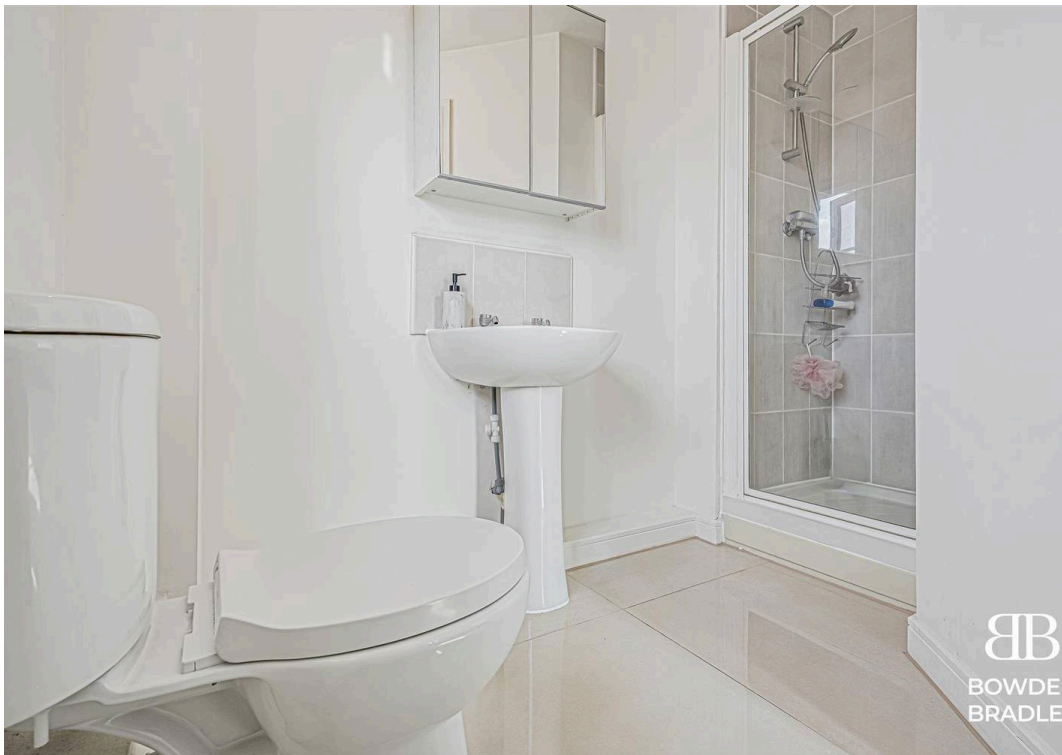
**Garden**

**Parking**



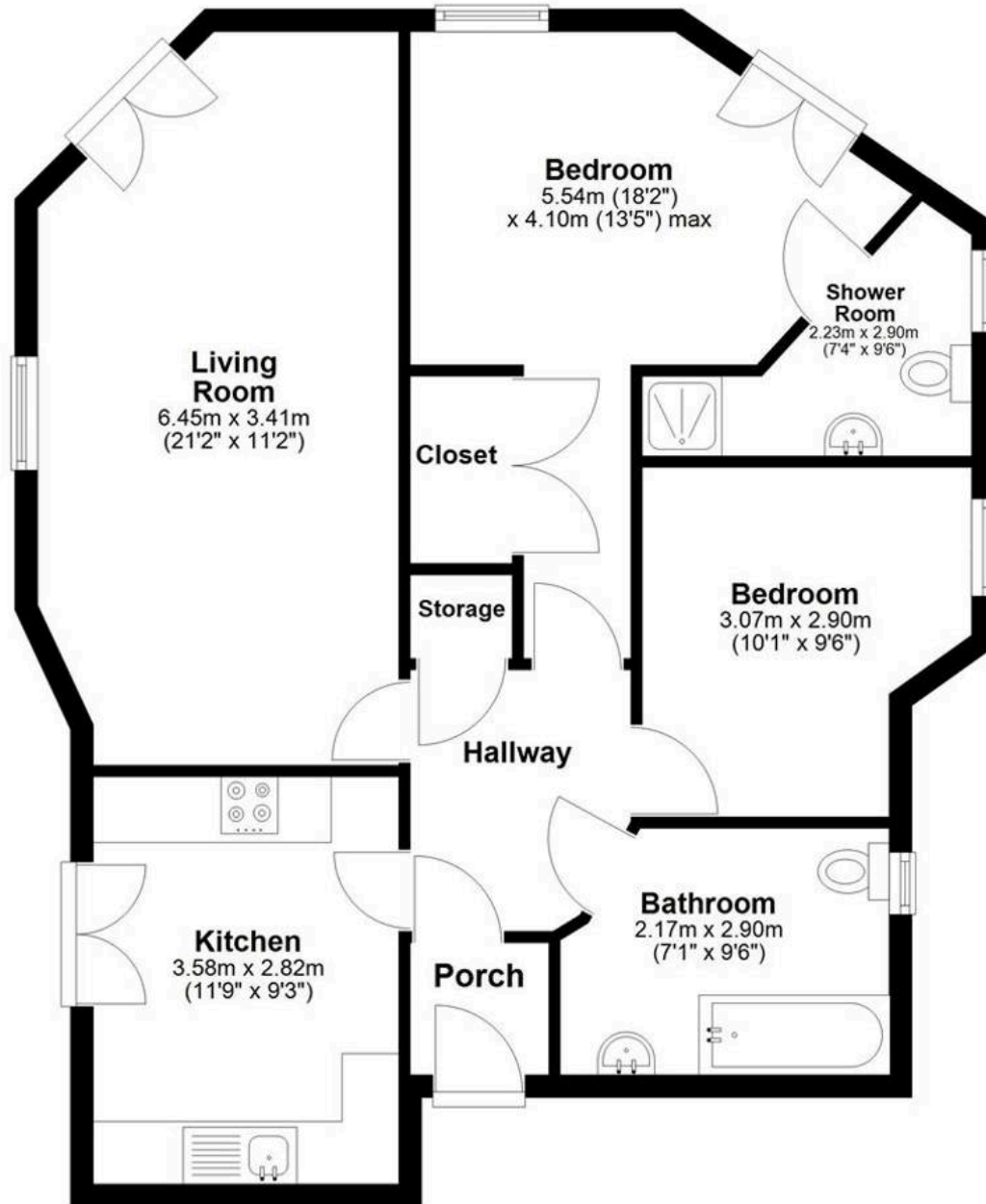
**BOWDEN  
BRADLEY**





## Second Floor

Approx. 70.5 sq. metres (758.3 sq. feet)



Total area: approx. 70.5 sq. metres (758.3 sq. feet)



## Bowden Bradley

Bansal House, Bracken Industrial Estate, 185 Forest Road - IG6 3HX

02080593593 · [info@bowdenbradley.co.uk](mailto:info@bowdenbradley.co.uk) · [bowdenbradley.co.uk/](http://bowdenbradley.co.uk/)