



## Charleville Road, W14

£850,000

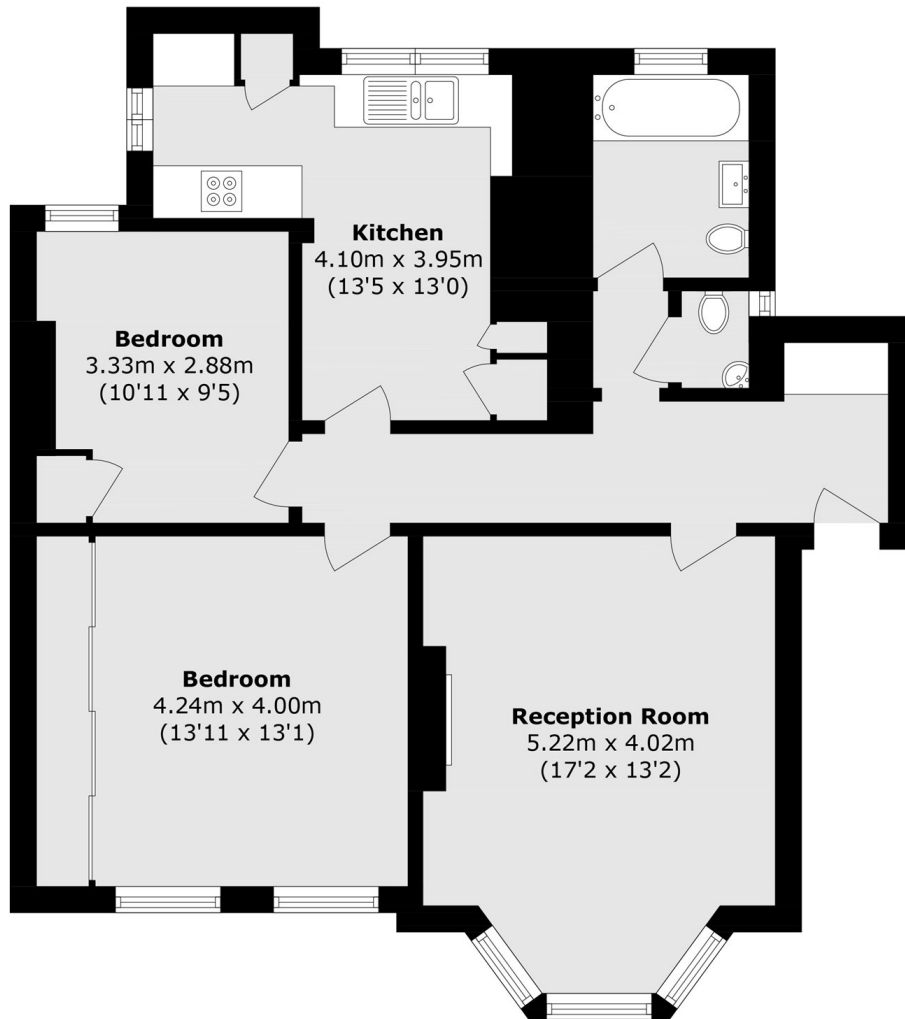
A large two-bedroom apartment situated in a prestigious mansion development in Barons Court. The property offers 874 square feet of space, a modern kitchen/diner, generously sized bedrooms and superb natural light.

Charleville Mansions is on Charleville Road nearer to Queen's Tennis Club and other facilities in Barons Court, including the Barons Court underground station. The A4 for easy access into and out of London is within three hundred yards and Kensington High Street is within a mile.

### Features

- Share Of Freehold
- Two Bedrooms
- First Floor
- Excellent Condition
- Close To Tubes
- Spacious

# Charleville Road, London, W14



Total area (approx.): 81.2 sq. m (874.0 sq. ft)