



Connells

Gayton Court
Peterborough

Gayton Court Peterborough PE3 7BX

for sale offers in excess of
£190,000



Property Description

This attractive three bedroom end-terraced home offers well-balanced and versatile accommodation arranged over two floors, making it an ideal choice for families, first-time buyers or those seeking a comfortable and practical home.

The ground floor is entered via a welcoming porch and hallway, leading through to a spacious living room positioned at the front of the property. To the rear, the kitchen/dining room provides a sociable and functional space with ample room for dining furniture, ideal for everyday living and entertaining. From here, access is provided into a conservatory which enjoys views over the rear garden and creates an additional reception space suitable for relaxing or informal dining. A convenient ground floor WC completes the downstairs accommodation.

On the first floor, the property offers three well-proportioned bedrooms, including a generous main bedroom and two further rooms suitable for children, guests or home working. The family bathroom is accessed from the central landing and serves all bedrooms.

Externally, the property benefits from an enclosed rear garden, offering a private outdoor space ideal for families, pets or outdoor entertaining. Additional storage is provided by a garage located en bloc.

Situated as an end-terraced home, the property enjoys a pleasant position and offers a practical layout suited to modern living.

Entrance Porch

Door to front.

Entrance Hall

Stairs to first floor.

Lounge

Two windows to the front, electric fireplace, carpet and radiator.

Kitchen/Diner

Window to conservatory, sink/drainer, storage cupboard, high and low level storage with worktops over, tiled flooring, oven with hob and hood, stainless steel sink/drainer with mixer tap, tiled splashbacks, space for appliances and sliding door to porch,

Porch

WC

Wash hand basin, WC.

Conservatory

Tiled flooring, combi boiler, door to rear.

First Floor

Bedroom One

Window to the front, built in wardrobes, laminate flooring and radiator,

Bedroom Two

Window to rear, built in wardrobes, laminate flooring and radiator.

Bedroom Three

Window to the front, carpet and radiator.

Shower Room

Window to the rear, shower cubicle, tiled walls and flooring, WC, wash hand basin, tiled,

Outside

Rear Garden

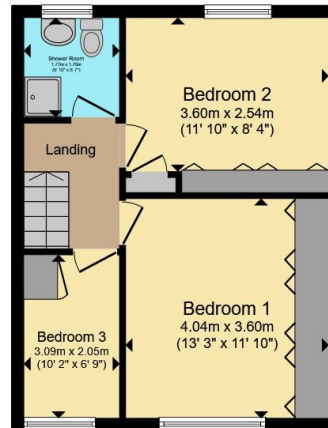
Shed, enclosed by brick wall and fencing and laid to patio.

Garage En Block





Ground Floor



First Floor

Total floor area 95.4 m² (1,027 sq.ft.) approx

This floor plan is for illustrative purposes only. It is not drawn to scale. Any measurements, floor areas (including any total floor area), openings and orientation are approximate. No details are guaranteed, they cannot be relied upon for any purpose and they do not form part of any agreement. No liability is taken for any error, omission or misstatement. A party must rely upon its own inspection(s). Powered by www.propertybox.io



To view this property please contact Connells on

T 01733 314 775
E peterborough@connells.co.uk

14 Cowgate
PETERBOROUGH PE1 1NA

EPC Rating: D Council Tax
Band: A

view this property online connells.co.uk/Property/PBO312713

Tenure: Freehold



1. MONEY LAUNDERING REGULATIONS Intending purchasers will be asked to produce identification documentation at a later stage and we would ask for your co-operation in order that there will be no delay in agreeing the sale. 2. These particulars do not constitute part or all of an offer or contract. 3. The measurements indicated are supplied for guidance only and as such must be considered incorrect. Potential buyers are advised to recheck measurements before committing to any expense. 4. We have not tested any apparatus, equipment, fixtures, fittings or services and it is in the buyers interest to check the working condition of any appliances.

Connells Residential is registered in England and Wales under company number 1489613, Registered Office is Cumbria House, 16-20 Hockliffe Street, Leighton Buzzard, Bedfordshire, LU7 1GN. VAT Registration Number is 500 2481 05.

See all our properties at www.connells.co.uk | www.rightmove.co.uk | www.zoopla.co.uk

Property Ref: PBO312713 - 0002