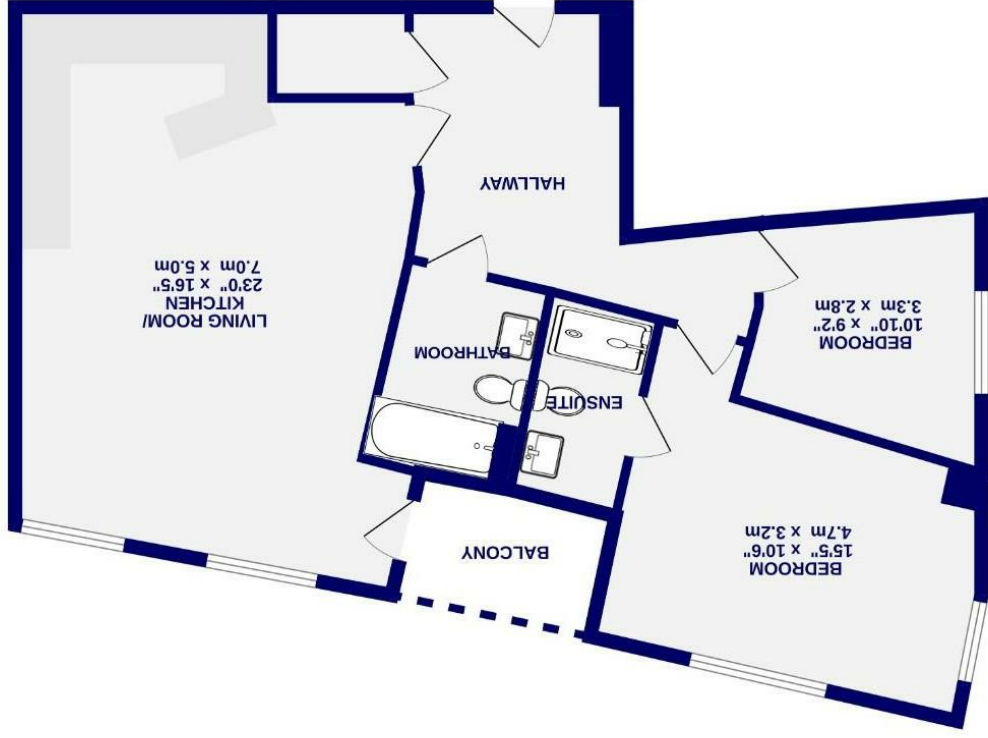


These particulars have been prepared as accurately and as reliably as possible, but should not be relied upon as 'statement of fact'. If there is any point which is of particular importance to you, please contact the office and we would be pleased to check the information. We have not tested any services, appliances, equipment or facilities and nothing in these particulars should be deemed to be a statement that they are in good working order, or that the property is in good structural condition or otherwise. Any areas, measurements, floor plans or distances referred to are given as a guide only and are not precise. Purchasers must satisfy themselves by inspection or by otherwise regarding the items mentioned above and as to the correctness of each of the statements contained in these particulars. No person in the employment of Ashtons has any authority to make or give any representation or warranty whatsoever in relation to this property or these particulars nor enter into any contract relating to the property on behalf of the vendor. Please note that some images may have been edited with the use of AI. We are legally required to carry out AML checks for all purchasers, sellers and giftors, which become mandatory once an offer has been accepted. There is a non-refundable fee of £30 + VAT per purchaser and per giftor for these checks.

Whilst every attempt has been made to ensure the accuracy of the description, measurement of rooms and any other areas and measurements, it remains the purchaser's responsibility to check the details of the property. Measurements are given as a guide only and should not be relied upon as to the correctness of the description. Measurements are given to the internal dimensions of the rooms. The floor area is given in square metres and square feet. Measurements are given to the internal dimensions of the rooms. The floor area is given in square metres and square feet. Measurements are given to the internal dimensions of the rooms. The floor area is given in square metres and square feet.



2ND FLOOR
810 sq.ft. (75.2 sq.m.) approx.

- Apartment
- Second Floor
- Two Double Bedrooms
- Two Bathrooms
- City Central
- Balcony
- No Onward Chain
- EPC C

Leasehold
Council Tax Band - E

Merchant Gate City Centre, York YO1 9TU



Merchant Gate
City Centre, York
YO1 9TU

£325,000



A superb two bedroom second floor apartment, placed within the sought after Merchant's Place development in the heart of York city centre.

Set alongside the River Foss and positioned within the historic city walls, the property offers bright and spacious accommodation with a contemporary feel throughout. The apartment opens to a generous entrance hallway leading through to an impressive open plan living, dining and kitchen area. This excellent space is ideal for modern city living and entertaining, with a well equipped kitchen, breakfast bar, seating area and access to a private balcony.

There are two well proportioned bedrooms, with the principal bedroom enjoying an en suite shower room and dual aspect city views. A separate bathroom serves the second bedroom and completes the accommodation.

Merchant's Place is entered via electric gates and benefits from an attractive communal patio area, bicycle storage and in house recycling facilities. The property is certain to appeal to both private buyers and investors looking for a well placed city centre apartment.

Merchant's Place enjoys a prime position close to the independent shops, bars and cafés of Fossgate and Walmgate, with Spark, supermarkets, restaurants, theatres and the wider amenities of York city centre all close by. York railway station offers regular services to major cities including Leeds, Manchester, Edinburgh and London King's Cross.

Leasehold
Length of lease- 238 years remaining
Ground rent - £451 per annum
Service Charge- £2,600.23 per annum

Council Tax Band- E

