

4 Burton Court Kiffin Road

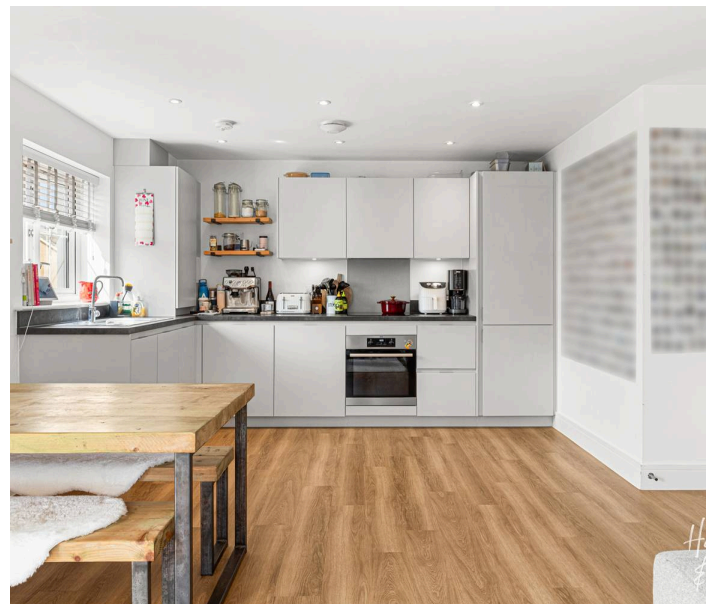
Bishop's Stortford

A sleek and spacious one bedroom apartment in the super spot of Burton Court. Sat close to Bishop's Stortford town centre and station, with fabulous green space on your doorstep, this apartment ticks the box!

Council Tax band: B

Tenure: Leasehold

- One bedroom apartment
- Open plan living
- Juliet balcony
- Allocated parking
- Short walk to lovely green space
- Close to Bishop's Stortford town centre & station



Hallway

Open Plan Kitchen / Living / Dining

23' 0" x 16' 3" (7.01m x 4.95m)

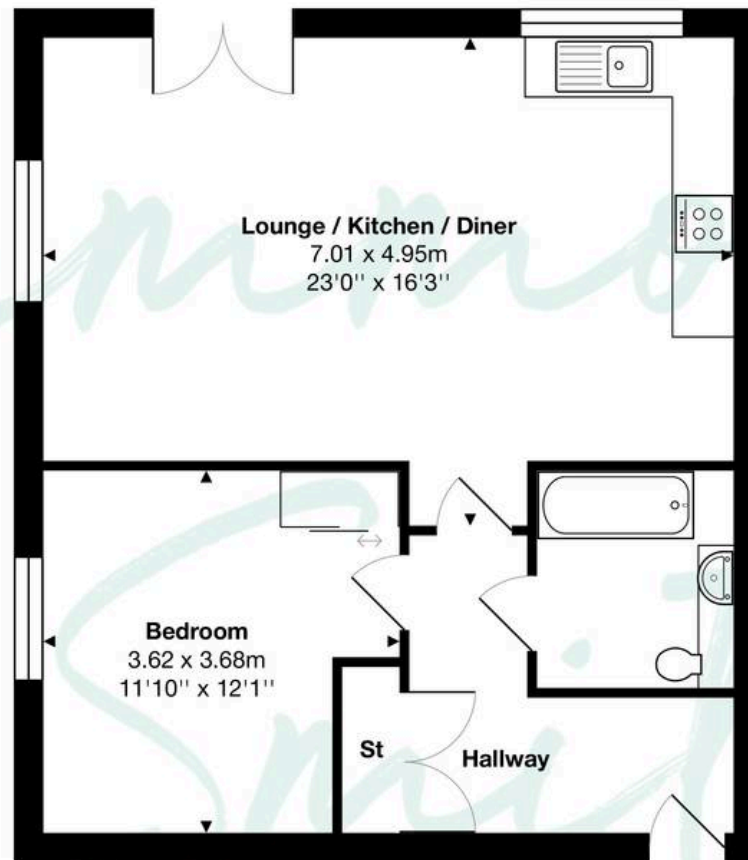
Bedroom

11' 11" x 12' 1" (3.62m x 3.68m)

Bathroom







Total Area: approx. 56.6 m² ... 609 ft²

THE FLOORPLAN IS FOR ILLUSTRATIVE PURPOSES ONLY AND IS NOT TO SCALE.
Measurements and features are approximate and may differ from the actual property. Verify all details independently; no liability is accepted for errors or omissions.

Property marketing provided by www.fotomarketing.co.uk