



## Queen's Gate, SW7

£1,500,000

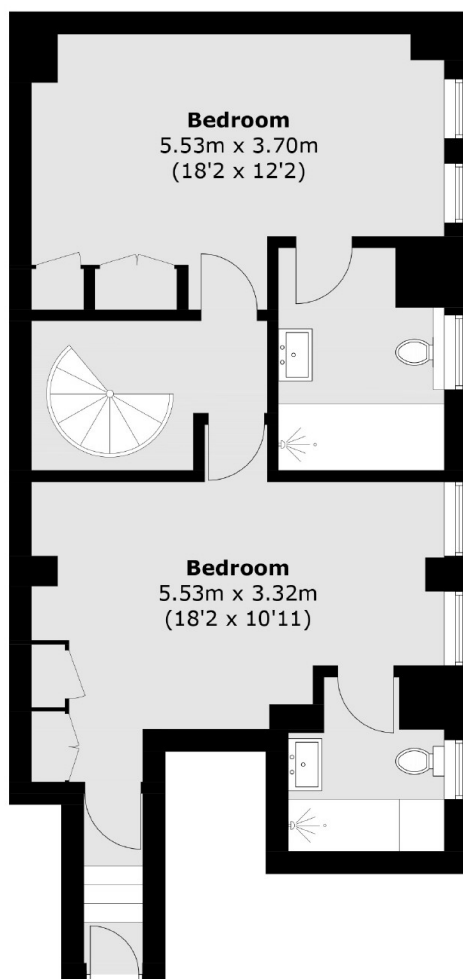
This immaculate two-bedroom apartment is located in the heart of South Kensington (SW7), just moments from the open green spaces of Hyde Park. Recently refurbished to an exceptional standard, the property seamlessly blends contemporary style with classic elegance.

Queen's Gate is in the heart of South Kensington within close walking distance of Kensington Gardens, Hyde Park, Knightsbridge and the Royal Albert Hall.

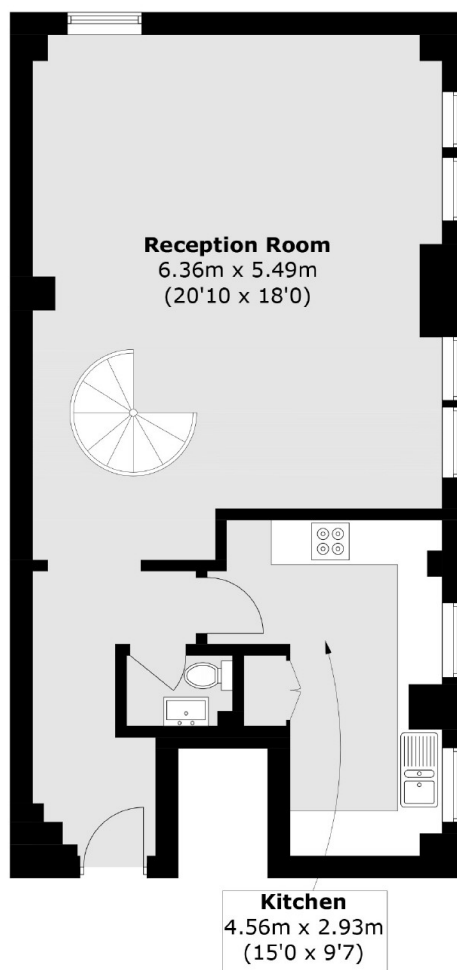
### Features

- No Ongoing Chain
- Recently Refurbished
- Long Lease
- Porter
- Lift
- Walking Distance Of Hyde Park

# Queen's Gate, London, SW7



**First Floor**



**Second Floor**

Total area (approx.): 115.6 sq. m (1,244.3 sq. ft)