



246 Nuneaton Road, Bulkington
Bedworth

Offers in Region of **£550,000**



**SHELDON
BOSLEY
KNIGHT**

LAND AND
PROPERTY
PROFESSIONALS

246 Nuneaton Road

Bulkington, Bedworth

Detached Bungalow| Four Bedrooms| Master En-suite| Off road parking and garage| Generously sized plot| Close to local amenities and schools| Transport links to Nuneaton and Bedworth| EPC RATING C
Council Tax band: E

Tenure: Freehold

EPC Energy Efficiency Rating: C

EPC Environmental Impact Rating: C

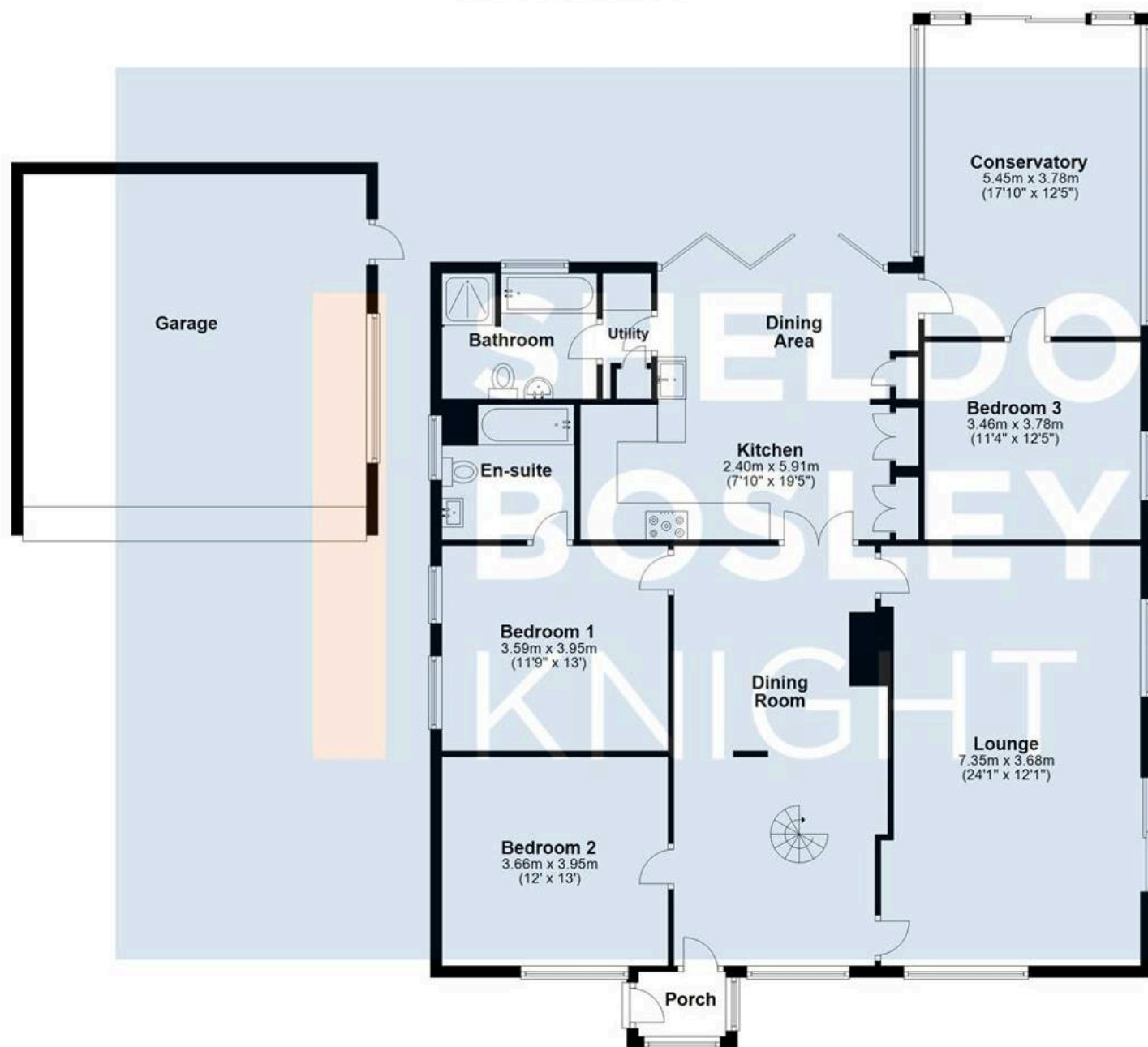
- Detached Bungalow
- Four Bedrooms
- Master En-suite
- Off road parking and garage
- Generously sized plot
- Close to local amenities and schools
- Transport links to Nuneaton and Bedworth
- EPC RATING C





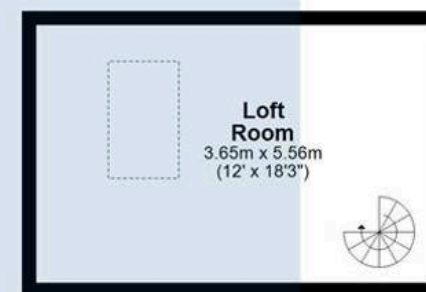
Ground Floor

Approx. 201.6 sq. metres (2169.8 sq. feet)



First Floor

Approx. 20.3 sq. metres (218.1 sq. feet)



Total area: approx. 221.8 sq. metres (2388.0 sq. feet)

All efforts have been made to ensure that the measurements on this floorplan are accurate however these are for guidance puposes only.
Plan produced using PlanUp.



Sheldon Bosley Knight Nuneaton

Sheldon Bosley Knight, 39 Newdegate Street - CV11 4ER

02476374949 • nuneaton@sheldonbosleyknight.co.uk • www.sheldonbosleyknight.co.uk/