



**Connells**

Blenheim  
Old Stratford MILTON KEYNES



## Property Description

Situated in the desirable village of Old Stratford, this beautifully presented four-bedroom detached family home offers spacious and versatile accommodation throughout, making it an ideal purchase for growing families.

The heart of the home is the impressive open-plan kitchen/diner, featuring a range of modern wall and base units, stylish marble flooring, and an abundance of natural light, creating a wonderful space for both everyday living and entertaining. A separate dining room provides additional reception space, perfect for family meals or hosting guests.

The spacious living room is bright and welcoming, benefiting from wood laminate flooring and double patio doors opening directly onto the rear garden, seamlessly blending indoor and outdoor living.

Upstairs, the property offers three generous double bedrooms alongside a fourth bedroom currently utilised as a home office, providing flexibility to suit a variety of lifestyles. The principal bedroom further benefits from its own en-suite shower room. A modern and spacious family bathroom completes the first floor accommodation.

Externally, the rear garden offers a fantastic combination of lawn, patio and decorative stone areas, providing ample space for outdoor dining, entertaining and relaxation.

This attractive detached home combines generous living space with a sought-after village setting and must be viewed to be fully appreciated.

## Entrance Hall

Welcoming entrance hall providing access to the principal ground floor accommodation. Entire downstairs features a natural Amtico flooring, half-glass doors, brushed chrome sockets and switches, creating a seamless and upscale look.

## Living Room

A spacious and bright reception room with double French doors opening onto the rear garden, providing a wonderful space for relaxing and entertaining.

## Kitchen/Diner

A stylish open-plan kitchen/diner fitted with a range of modern wall and base units with soft close. Finished with attractive marble countertop and backsplash, and benefiting from excellent natural light, offering ample space for dining and family gatherings.

## Dining Room

A versatile reception room ideal dining, entertaining guests or use as an additional family room with patio door access to the rear garden.

## Utility Room

Practical utility space providing additional storage and laundry facilities, with additional sink and marble countertop.

## Downstairs Wc

Convenient ground floor cloakroom comprising WC and wash hand basin.

## Bedroom One

Generous double bedroom with ample space for furnishings and access to a private en-suite shower room.

## En-Suite

Modern suite comprising shower enclosure, wash hand basin, WC and heated towel rail.

## Bedroom Two

Spacious double bedroom with natural light and room for freestanding furniture.

## Bedroom Three

Further well-proportioned double bedroom offering comfortable accommodation.

## Bedroom Four/Office

Currently utilised as a home office, this versatile room could equally serve as a fourth bedroom, nursery or study.

## Family Bathroom

A spacious and modern bathroom featuring a bath, wash hand basin, WC and heated towel rail.

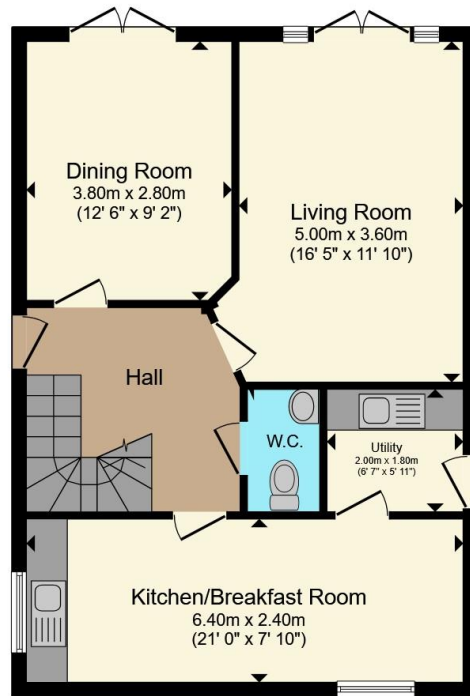
## Rear Garden

A well-maintained outdoor space incorporating lawn, patio and decorative stone areas, ideal for outdoor dining, entertaining and family enjoyment.

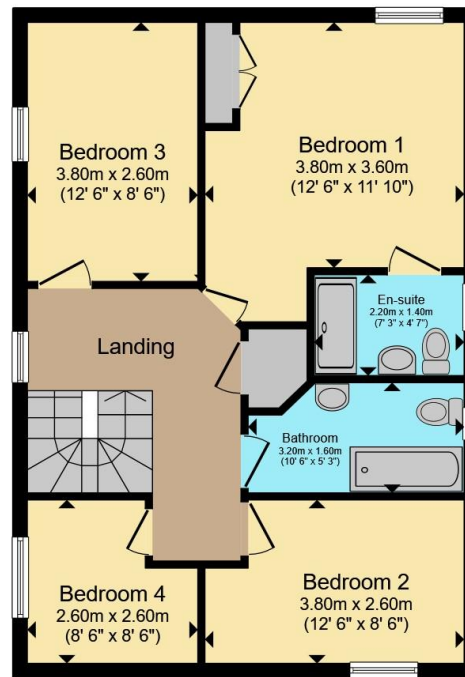








**Ground Floor**



**First Floor**

Total floor area 120.3 m<sup>2</sup> (1,295 sq.ft.) approx

This floor plan is for illustrative purposes only. It is not drawn to scale. Any measurements, floor areas (including any total floor area), openings and orientation are approximate. No details are guaranteed, they cannot be relied upon for any purpose and they do not form part of any agreement. No liability is taken for any error, omission or misstatement. A party must rely upon its own inspection(s). Powered by www.propertybox.io



To view this property please contact Connells on

**T 01908 563 993**  
**E stonystratford@connells.co.uk**

82 High Street Stony Stratford  
MILTON KEYNES MK11 1AH

EPC Rating: B

Tenure: Freehold

**check out more properties at [connells.co.uk](http://connells.co.uk)**



1. MONEY LAUNDERING REGULATIONS Intending purchasers will be asked to produce identification documentation at a later stage and we would ask for your co-operation in order that there will be no delay in agreeing the sale. 2. These particulars do not constitute part or all of an offer or contract. 3. The measurements indicated are supplied for guidance only and as such must be considered incorrect. Potential buyers are advised to recheck measurements before committing to any expense. 4. We have not tested any apparatus, equipment, fixtures, fittings or services and it is in the buyers interest to check the working condition of any appliances.

Connells Residential is registered in England and Wales under company number 1489613, Registered Office is Cumbria House, 16-20 Hockliffe Street, Leighton Buzzard, Bedfordshire, LU7 1GN. VAT Registration Number is 500 2481 05.

**See all our properties at [www.connells.co.uk](http://www.connells.co.uk) | [www.rightmove.co.uk](http://www.rightmove.co.uk) | [www.zoopla.co.uk](http://www.zoopla.co.uk)**

Property Ref: SSD307777 - 0004