

first for homes

first for property in life - firstforhomes.co.uk

Contact Allan England's Team
01592 752 944



Cameron Crescent, Glenrothes
Offers over £107,000

Cameron Crescent, Glenrothes

Welcome To Cameron Crescent, A Bright & Spacious 2 Bedroom Terraced Villa With Space For Driveway Subject To Planning, Situated In The Highly Sought-After South Parks Area of Glenrothes!

Allan England's Team at first for homes are proud to present to the market this excellent first time purchase 2 bedroom terraced villa situated in the desired area of South Parks, Glenrothes! This bright and spacious home offers; entrance hallway, open plan lounge/diner and well proportioned kitchen. Stairs to the upper level provide 2 double bedrooms both benefiting from built in storage cupboards and family bathroom.

Externally there is an easily maintained private rear garden with patio and lawn area including 2 outbuilding coal storage units as well as a front garden with hedge surround and potential to add driveway subject to planning. Close to local amenities, walking distance to town centre, bus station and schools, viewing is essential to fully appreciate what this excellent home has to offer.

HOME REPORT - £112,000

EPC - B

COUNCIL TAX - C

Call first for homes - first for trust... first for service... first for aftercare!

Glenrothes is regarded as one of the most successful Towns in Scotland with a wealth of local amenities including Kingdom Shopping Centre as well as sport and leisure at Michael Woods and a multi-screen cinema. Glenrothes boasts its very own 18-hole Golf course and both Primary and Secondary schooling are available. For the commuter the A92 allows swift access to Edinburgh and there are railway stations at both Thornton and Markinch.

These particulars are prepared on the basis of information provided by our clients. We have not tested the electrical system or appliances, nor where applicable, any central heating system. All sizes are recorded by electronic tape measurements to give an indicative, approximate size only. Prospective purchasers should make their own enquiries - no warranty is given or implied. This schedule is not intended to, and does not form any contract.





SITUATION – Glenrothes

ENTRANCE HALLWAY

LOUNGE/DINER

19'5" x 9'10" (approx) (5.92m x 3m (approx))

KITCHEN 9'0" x 7'11" approx (2.76m x 2.42m approx)

STAIRS TO UPPER LEVEL

BEDROOM 1

14'9" x 8'9" (approx) (4.50m x 2.68m (approx))

BEDROOM 2

11'7" x 10'6" (approx) (3.54m x 3.22m (approx))

FAMILY BATHROOM

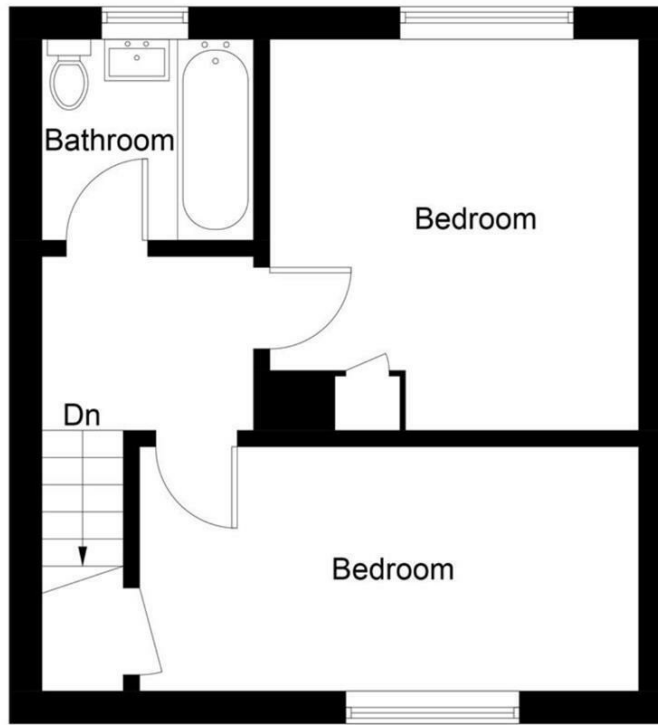
GARDEN GROUNDS

INFORMATION





Ground Floor



First Floor

Illustration for identification purposes only, measurements are approximate, not to scale. Fourlabs.co © (ID1186161)

Information

These particulars are prepared on the basis of information provided by our clients. We have not tested the electrical system or any electrical appliances, nor where applicable, any central heating system. All sizes are recorded by electronic tape measurement to give an indicative, approximate size only. Prospective purchasers should make their own enquiries – no warranty is given or implied. This schedule is not intended to, and does not form any contract.

FREE Valuation

Selling Your Home?

Choose first for homes - a highly experienced estate agency team you can trust to sell your home at the highest possible price. Offering fantastic savings on selling fees, with no compromise on service, free professional photography highlighting your home in its best light, first for homes will be your first choice. Contact us today to arrange your appointment.



first for trust



first for service



first for aftercare

first for homes
first for property in life - firstforhomes.co.uk

Contact Allan England's Team
01592 752 944

32 North Street, Glenrothes, Fife KY7 5NA
Fax: 01592 807947
sales@firstforhomes.co.uk
www.firstforhomes.co.uk