





D1 USE

Set on this busy retail high street comes the D1 use commercial space located above a parade of shops with easy access and close to local transport links. Currently used as a tuition centre the space will be divided allowing use of an office area, a kitchen and a large size room. There are also further options to have use of the whole premises please contact us to discuss further.

The Broadway, Ealing

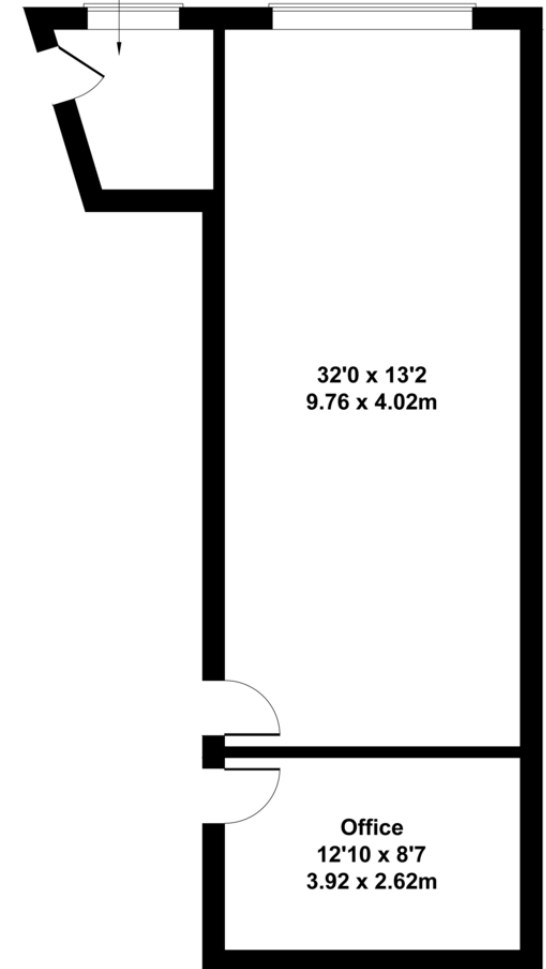
Approximate Gross Internal Area

589 sq ft - 55 sq m

Kitchen Area

7'2 x 7'2

2.18 x 2.18m



Not to Scale. Produced by The Plan Portal 2022
For Illustrative Purposes Only.