

## FOR SALE

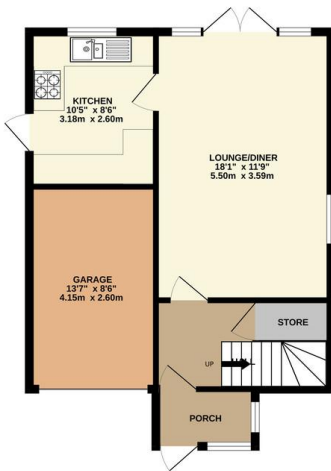
3 Bed Detached House in Foxcroft Close, Rowley Fields LE3 2DZ  
£280,000

This neatly presented three bedroom detached family home is situated in the ever popular location of Rowley Fields. Boasting a stylish re-fitted bathroom suite, a light and spacious reception room, landscaped gardens, off-road parking, and a garage, this property offers comfort, space in equal measure. Contact Phillips George today to arrange your viewing.

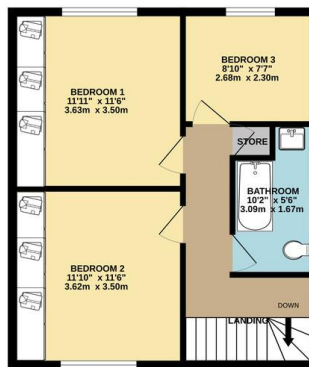




GROUND FLOOR  
513 sq.ft. (47.7 sq.m.) approx.

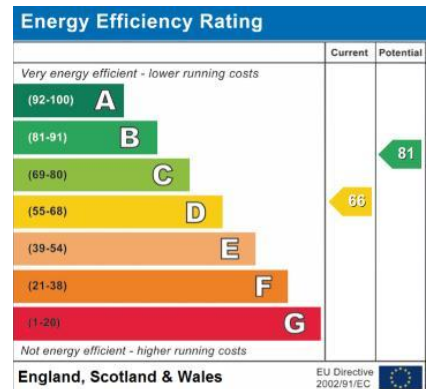


1ST FLOOR  
482 sq.ft. (44.8 sq.m.) approx.



TOTAL FLOOR AREA: 996 sq.ft. (92.5 sq.m.) approx.

Whilst every attempt has been made to ensure the accuracy of the floorplan contained herein, measurements of doors, windows, rooms and any other items are approximate and no responsibility is taken for any error, omission or mis-statement. This plan is for illustrative purposes only and should be used as such by any prospective purchaser. The services, systems and appliances shown have not been tested and no guarantee as to their operation or efficiency can be given. Made with Metreapp ©2025



- Detached
- Three Bedrooms
- Highly Popular Location
- Neatly Presented
- Refurbished Bathroom
- Landscaped Gardens
- Garage & Off Road Parking
- Kitchen

**Agents Note:** Whilst every care has been taken to prepare these sales particulars, they are for guidance purposes only. All measurements are approximate are for general guidance purposes only and whilst every care has been taken to ensure their accuracy, they should not be relied upon and potential buyers are advised to recheck the measurements.

