



202 Denmark Hill | London | SE5 8EE

Leasehold

£400,000

- One double bedroom
- Private garden
- Open plan
- Modern Kitchen
- Plenty of storage
- Local amenities
- Denmark Hill Station
- Herne Hill
- Excellent bus routes
- Kings College Hospital

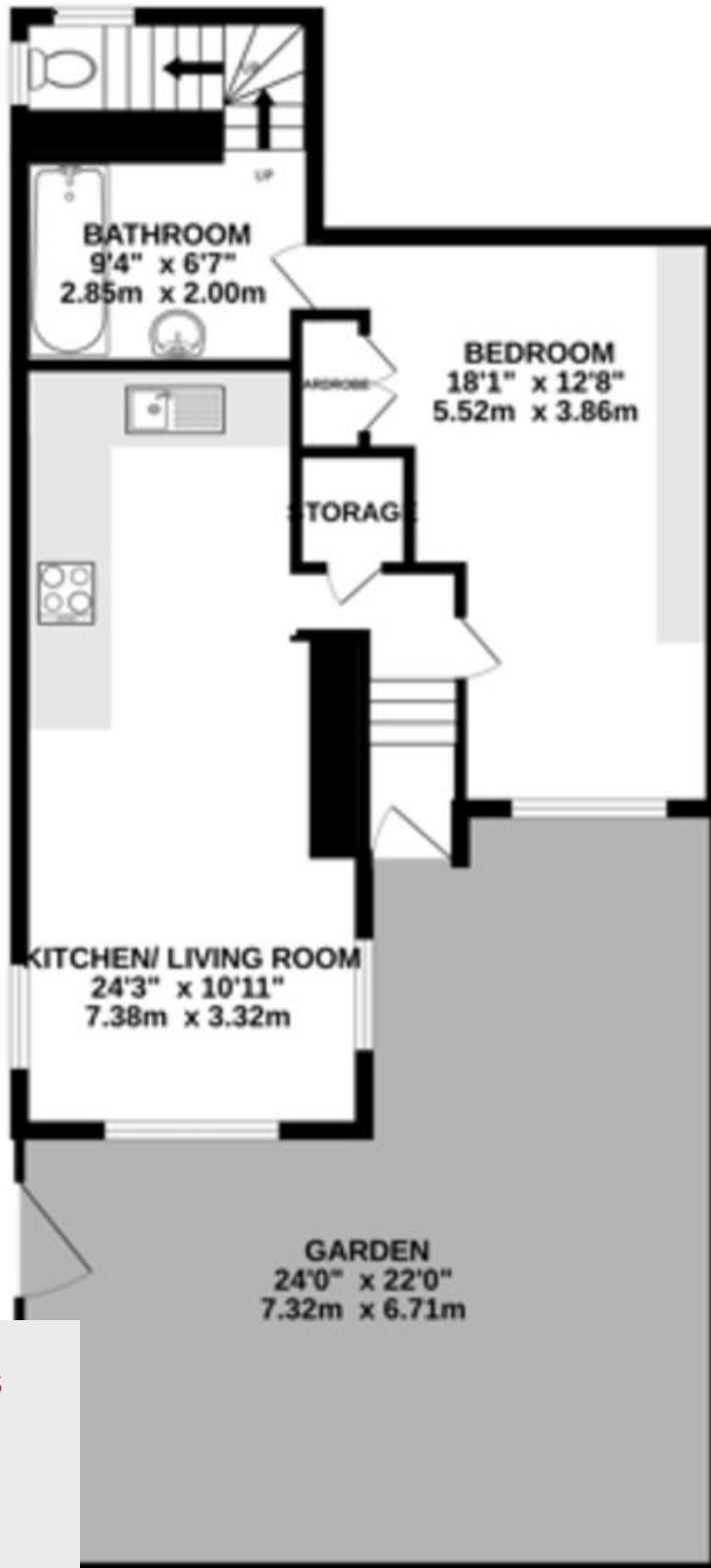


Pretty ground floor garden flat close to Ruskin Park with excellent transport links at Herne Hill and Denmark Hill. The flat is at the back of the building so very quiet and opens directly onto a private garden. It has an open plan reception / kitchen, bathroom and a double bedroom with lots of built in storage. Off road parking is available on the front driveway. Amenities within walking distance include Brockwell Park lido, Herne Hill market, Brixton tube, POP and market. Other attractions include local gyms, sauna, summer bandstand concerts, fetes, local eateries and coffee shops. Fast trains to City and West End as well as excellent bus routes.



%epcGraph_c_1_300%

GROUND FLOOR
500 sq.ft. (52.0 sq.m.) approx.



Viewing Arrangements

Strictly by appointment

Contact Details

121 Denmark Hill

London

SE5 8EN

www.urbanvillagehomes.co.uk

sales@urbanvillagehomes.com

020 3519 9121

TOTAL FLOOR AREA - 560 sq.ft. (52.0 sq.m.) approx.

Agents Note: Whilst every care has been taken to prepare these sales particulars, they are for guidance purposes only. All measurements are approximate and for general guidance purposes only and whilst every care has been taken to ensure their accuracy, they should not be relied upon and potential buyers are advised to recheck the measurements.