

Oughton Head Way, Hitchin, SG5 2LE

Offers Over £400,000

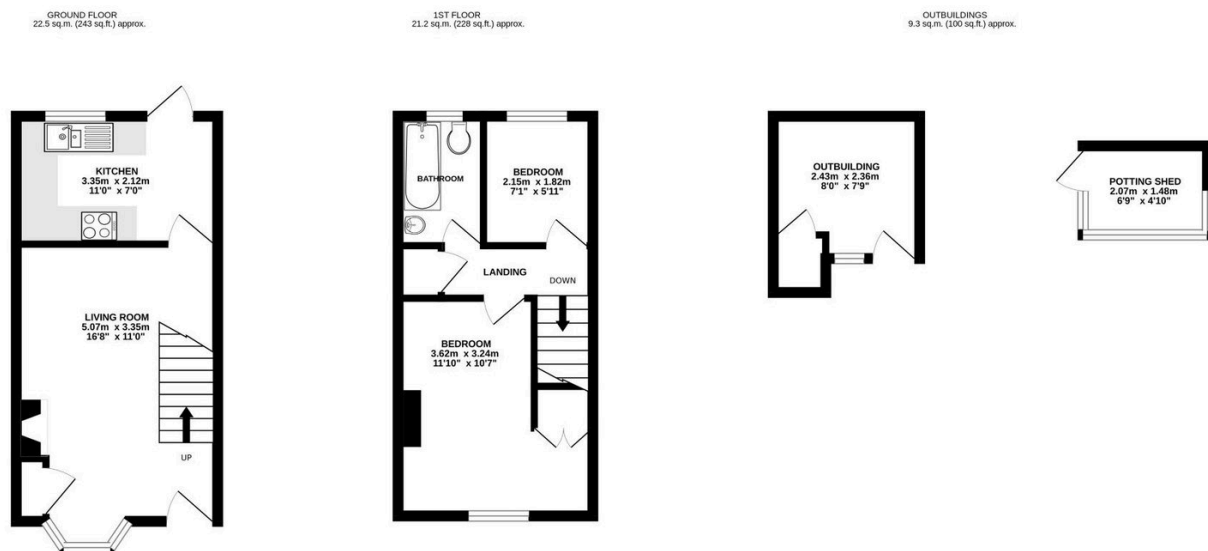
2 1 1



Nestled within the forever popular and highly sought-after area of Oughton Head, this beautifully charming two-bedroom character cottage offers a wonderful blend of period charm, cosy living and an enviable lifestyle location just moments from Hitchin town centre.

Key Features

- Must see video tour
- Charming two-bedroom character cottage
- Highly desirable Oughton Head location
- Bright bay-fronted living room
- Generous kitchen overlooking the garden
- Sunny mature rear garden
- Useful outbuilding with excellent home office potential
- Spacious principal bedroom with built-in storage
- Bright second bedroom ideal for guests or home working
- Walking distance to Hitchin town centre



TOTAL FLOOR AREA : 53.0 sq.m. (571 sq.ft.) approx.

Whilst every attempt has been made to ensure the accuracy of the floorplan contained here, measurements of doors, windows, rooms and any other items are approximate and no responsibility is taken for any error, omission or mis-statement. This plan is for illustrative purposes only and should be used as such by any prospective purchaser. The services, systems and appliances shown have not been tested and no guarantee as to their operability or efficiency can be given.
Made with Metropix ©2026