



ELM GROVE, SW19

£3,000 per month

Three bedrooms
Contemporary apartment
Part furnished
Recently developed
Energy rating: b



ABOUT THE PROPERTY

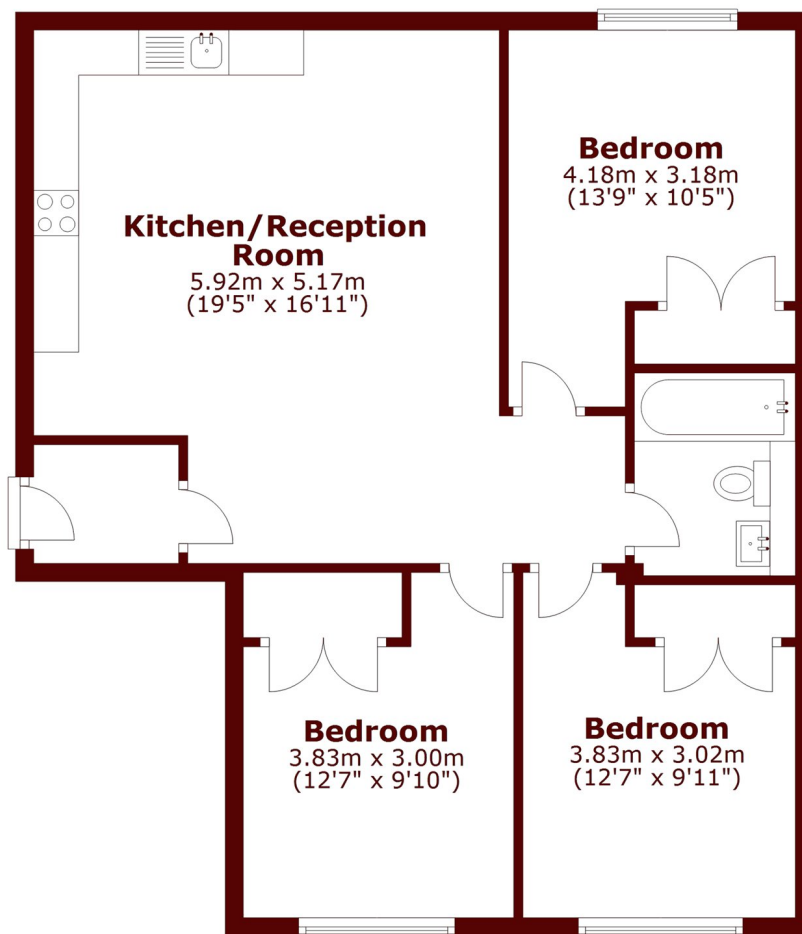
A three bedroom apartment available in the Watson Studios Development. This converted warehouse is located 0.5 miles from Wimbledon Station and comprises an open plan kitchen/reception room, three double bedrooms and bathroom. The property is finished to a high specification.

Located in the heart of Wimbledon only 0.8 miles from the beautiful Wimbledon Common and approximately 0.5 miles on Wimbledon Station.



STEP INSIDE ELM GROVE

Second Floor



Total area: approx. 74.1 sq. metres (797.7 sq. feet)

Wimbledon
020 8879 6661

Energy Rating: B We aim to make our particulars both accurate and reliable. However, they are not guaranteed; nor do they form part of an offer or contract. If you require clarification on any points then please contact us, especially if you're traveling some distance to view. Please note that appliances and heating systems have not been tested and therefore no warranties can be given as to their good working order

MARSH &
PARSONS