



Price
£325,000

Freehold

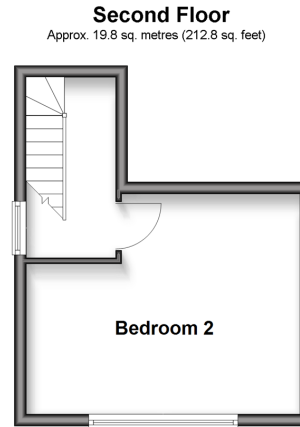
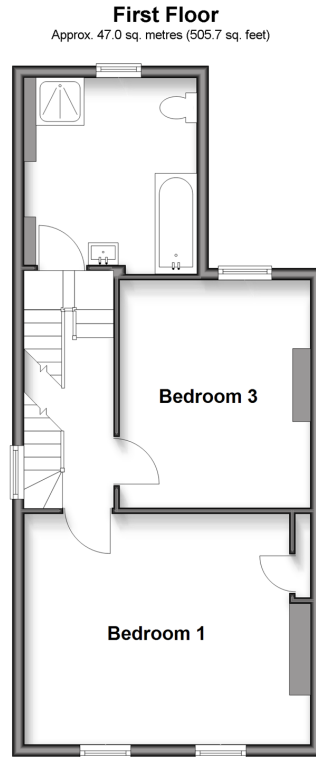
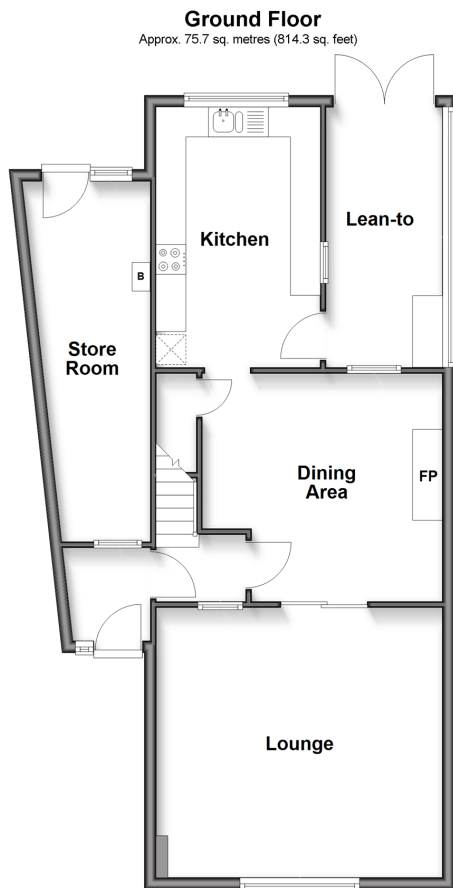
3x  1x  2x 

**Somerset Road,
Folkestone, Kent, CT19**

OVER 60?

Secure this property
for up to **59% less!**

Wards
Helping you move forwards



Accommodation

GROUND FLOOR

Entrance Porch
Hallway
Lounge: 16'0 x 14'9 (4.88m x 4.50m)
Dining Area: 13'2 x 12'4 (4.02m x 3.76m)
Kitchen: 14'3 x 8'10 (4.35m x 2.69m)
Lean-to: 14'3 x 6'7 (4.35m x 2.01m)
Store Room

FIRST FLOOR

Landing
Bedroom 1: 15'11 x 12'5 (4.85m x 3.79m)
Bedroom 3: 13'5 x 10'6 (4.09m x 3.20m)
Bathroom: 10'9 x 9'2 (3.28m x 2.80m)

SECOND FLOOR

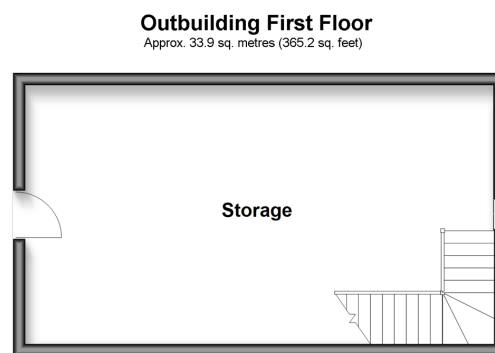
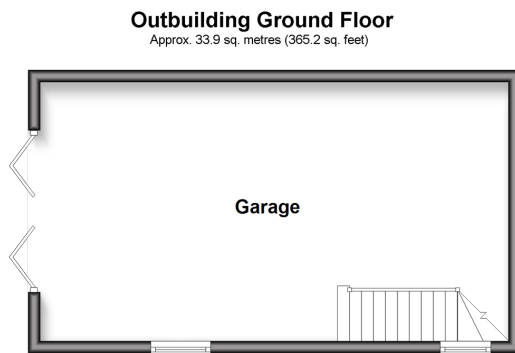
Landing
Bedroom 2: 15'0 x 12'0 (4.58m x 3.66m)

OUTBUILDING

Ground Floor
First Floor

OUTSIDE

Rear Garden
Off Road Parking





Main features

- Versatile living accommodation split over three floors
- Off road parking
- Two storey outbuilding - ideal workshop or annex (subject to planning permission)
- In need of updating
- Close to schools, shops and station with high speed links to London



Nearest Schools

Primary Schools: All Souls' C of E Primary 0.2 miles, Harcourt Primary 0.4 miles, Morehall Primary 0.6 miles

Secondary Schools: The Harvey Grammar School 0.8 miles, The Folkestone School for Girls 1.5 miles



Transport Information

Train Stations: Folkestone West High Speed Link 1.0 miles, Folkestone Central 1.6 miles, Sandling 5.5 miles



Address

Somerset Road, Folkestone, Kent, CT19



Directions

For directions to this property please contact us.



Wards
Helping you move forwards

Call Folkestone Branch 01303 256505 ■ wardsofkent.co.uk



- Legal advice should be taken to verify fixtures/fittings, planning, alterations and/or lease details
- Appliances & services are untested, dimensions are approximate and floor plans are not to scale
- Through a Homewise Home For Life Plan people aged 60+ can secure this property for up to 50% less, by purchasing a Lifetime Lease



12638411/20251204/CW/CC