



Mount Pleasant Road

Kensal Rise, NW10

£11,500 PCM



Mount Pleasant Road

Kensal Rise, NW10

A striking and beautifully designed family home on one of NW10's most sought-after streets, this exceptional five-bedroom house on Mount Pleasant Road offers almost 3,000 sq ft of elegant living space. Every detail has been carefully considered, with interiors designed by Sophie Pringle of Pringle & Pringle and a stunning southwest-facing garden by award-winning landscape designer Butter Wakefield.

At the heart of the home is a spectacular open-plan kitchen and dining space, filled with natural light from a central skylight and full-width Crittall-style doors opening onto the garden. The bespoke kitchen combines style and practicality, featuring Italian marble worktops, a Le Canche range cooker, Miele appliances, an integrated Fisher & Paykel fridge, and a cleverly hidden breakfast bar. A separate butler's pantry provides additional storage, freezer space and a second dishwasher.

Designed for modern living, the house includes underfloor heating across the ground floor, CAT6 wiring throughout, and an integrated Sonos sound system extending across the main living areas. The front reception room is fully AV wired and centred around a contemporary bioethanol fireplace, while the property is also ready for a full security system.

Upstairs, there are five beautifully arranged bedrooms, including a luxurious principal suite with extensive fitted wardrobes. Thoughtful family touches can be found throughout, including a laundry chute connecting the children's bathroom directly to the utility room, which also features a 144-bottle Fisher & Paykel wine fridge.

The southwest-facing garden is a true highlight, its private, beautifully landscaped and designed for both entertaining and family life.

With off-street parking, excellent storage and a prime location moments from Tiverton Green, Queen's Park and outstanding local schools, this is a rare opportunity to rent a truly special family home.

Mount Pleasant Road

Kensal Rise, NW10

Mount Pleasant is a quiet, tree-lined road that is ideally situated to access the amenities of Chamberlayne Road, Willesden Green and Queen's Park. Kensal Green (Bakerloo Line and London Overground) and Kensal Rise (London Overground) are just a few minutes from the property and the excellent primary schools, including Malorees Junior.

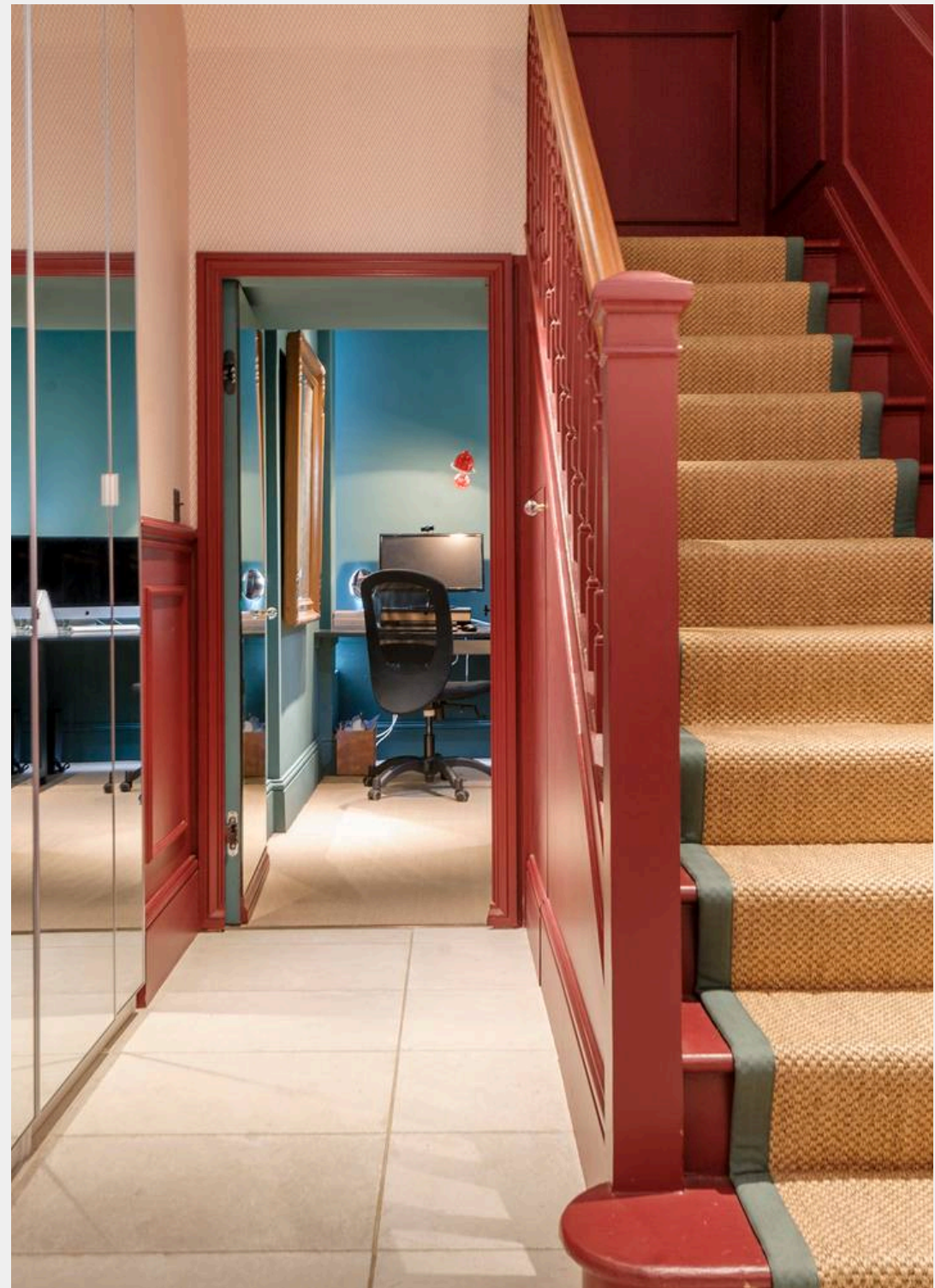
Council Tax band: F

Tenure: Freehold

EPC Energy Efficiency Rating: E

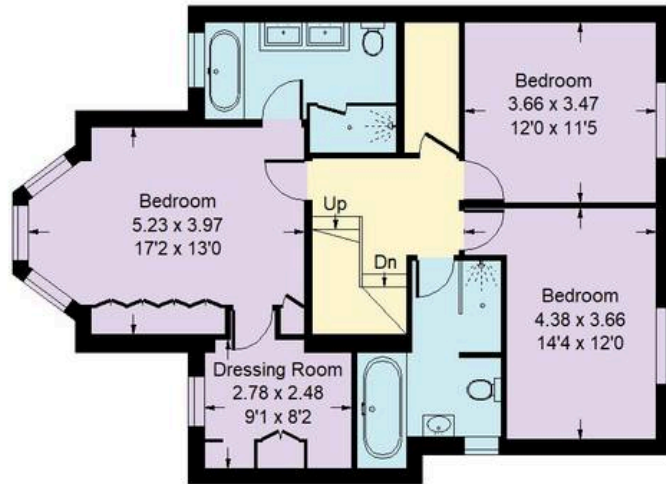
EPC Environmental Impact Rating: E

- Semi Detached House
- Off Street Parking
- Fantastic Condition
- South West Facing Garden

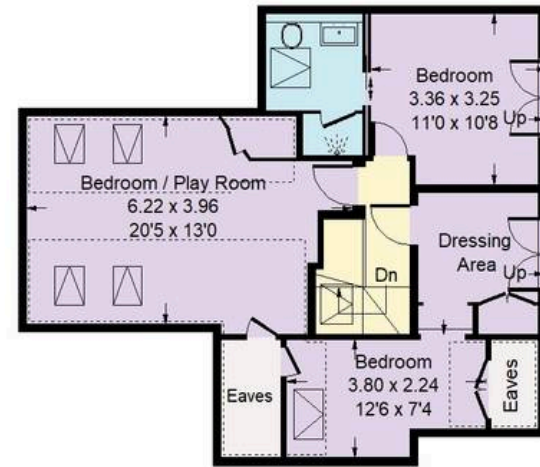




Mount Pleasant Road, NW10



First Floor

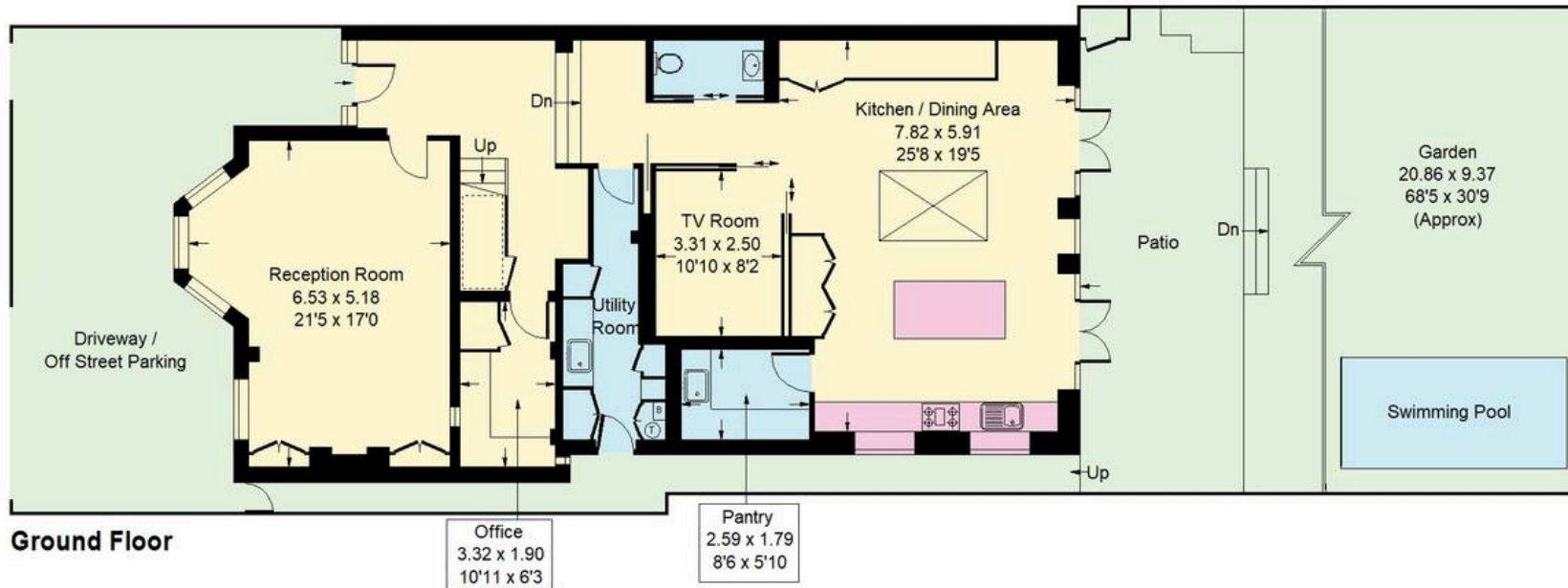


Second Floor

Approx. Gross Internal Area = 271.3 sq m / 2920 sq ft
Eaves = 4.1 sq m / 44 sq ft
Total = 275.4 sq m / 2964



— = Reduced headroom
below 1.5 m / 5'0



Ground Floor

Whilst every attempt has been made to ensure the accuracy of the floor plan, measurements are approximate and not to scale.
No guarantee is given on the total square footage of the property quoted on the plan. Figures given are for guidance.
Plan is for illustration purposes only, not to be used for valuations.



Rigby & Marchant

115 Westbourne Studios 242 Acklam Road, London - W10 5JJ

020 7221 7210

lettings@rigbyandmarchant.co.uk

www.rigbyandmarchant.co.uk/

R&M