

Piazza Walk, E1

£2,900 Per calendar month

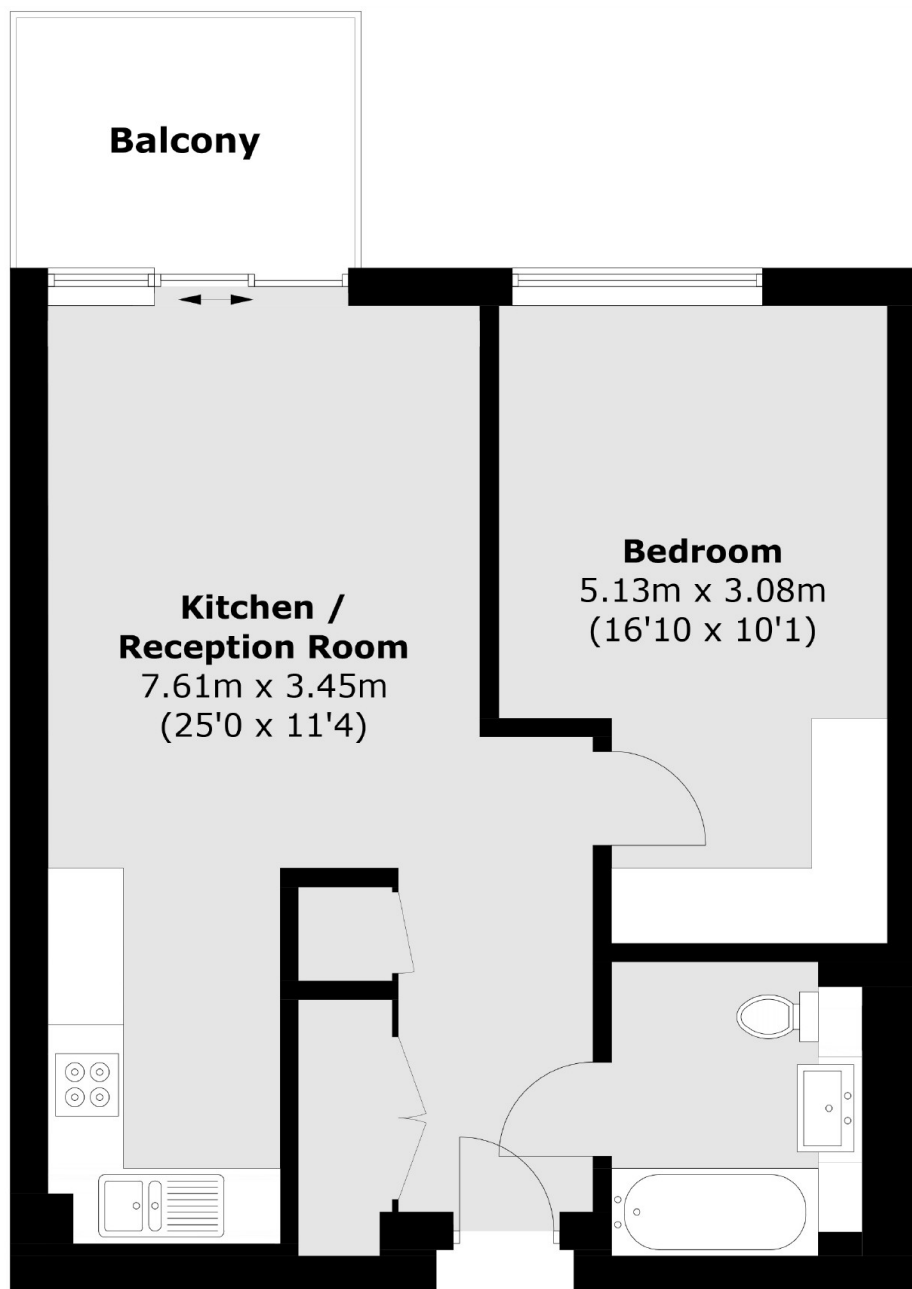
A one double bedroom apartment in Goodman's Fields. The property has an open plan kitchen reception, floor to ceiling windows, private balcony. The development has a 24 hour concierge, on site residents gym, swimming pool and cinema room. Ideal for a couple or single professional.

Perfect central location within easy reach of Liverpool Street, Bank and Canary Wharf. Brick Lane and Spitalfields Market are just a few streets away for all bars, shops and restaurants.

Features

- One Double Bedroom
- Private Balcony
- City Views
- Wood Flooring
- Gym Facilities
- 24 Hour Concierge

Piazza Walk, London, E1



Ninth Floor

Total area (approx.): 50.6 sq. m (545 sq. ft)
Balcony area (approx.): 5.4 sq. m (58 sq. ft)