



43 Keepers Meadow, Long Itchington

Southam

Guide Price **£460,000**





43 Keepers Meadow

Long Itchington, Southam

Four-bedroom detached family home in Long Itchington with a bright living room, open-plan kitchen diner, principal bedroom with en-suite, south-west facing garden, garage and driveway parking for two vehicles.

Council Tax band: E

Tenure: Freehold

EPC Energy Efficiency Rating: B

EPC Environmental Impact Rating: B

- Four-bedroom detached family home in Long Itchington
- Open-plan kitchen diner with integrated appliances
- South-west facing garden ideal for entertaining
- Master bedroom with en-suite shower room
- Garage and driveway parking for two vehicles



Living Room

17' 9" x 11' 6" (5.40m x 3.50m)

Kitchen / Diner

19' 4" x 14' 1" (5.90m x 4.30m)

Utility

5' 3" x 4' 7" (1.60m x 1.40m)

WC

Master Bedroom

14' 5" x 10' 10" (4.40m x 3.30m)

En-suite

Bedroom 2

10' 10" x 9' 10" (3.30m x 3.00m)

Bedroom 3

10' 6" x 8' 2" (3.20m x 2.50m)

Bedroom 4

9' 10" x 7' 3" (3.00m x 2.20m)

Bathroom

6' 11" x 5' 7" (2.10m x 1.70m)





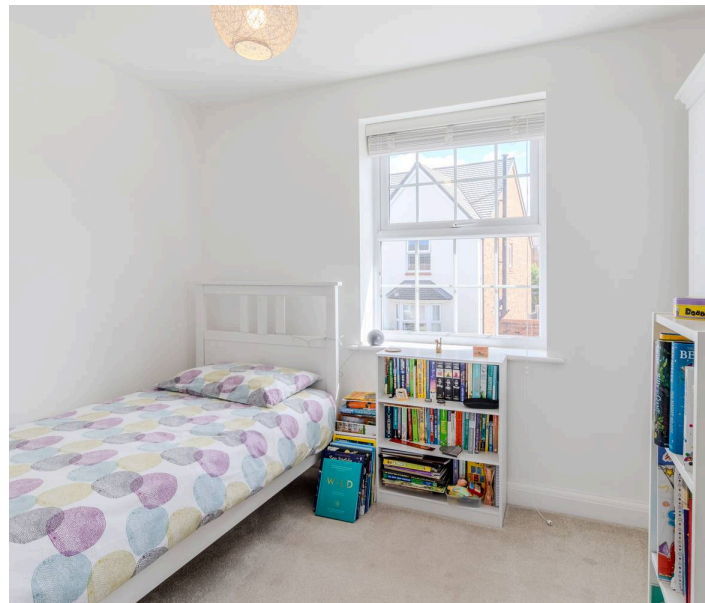
GARDEN

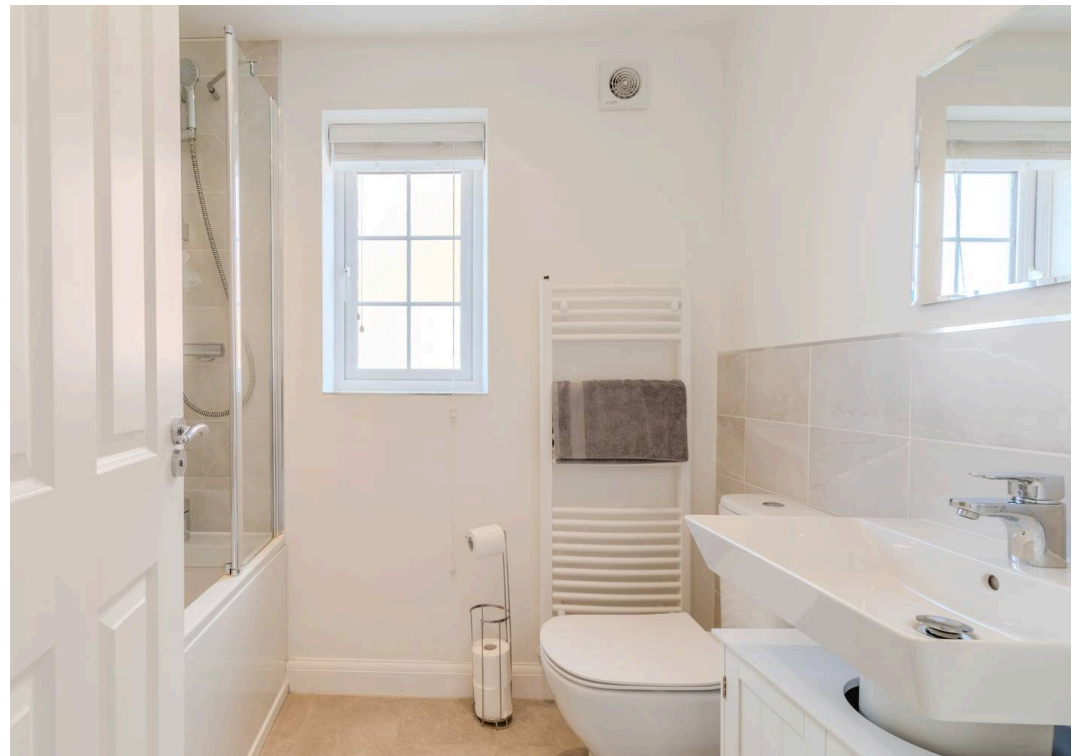
GARAGE

Single Garage

DRIVEWAY

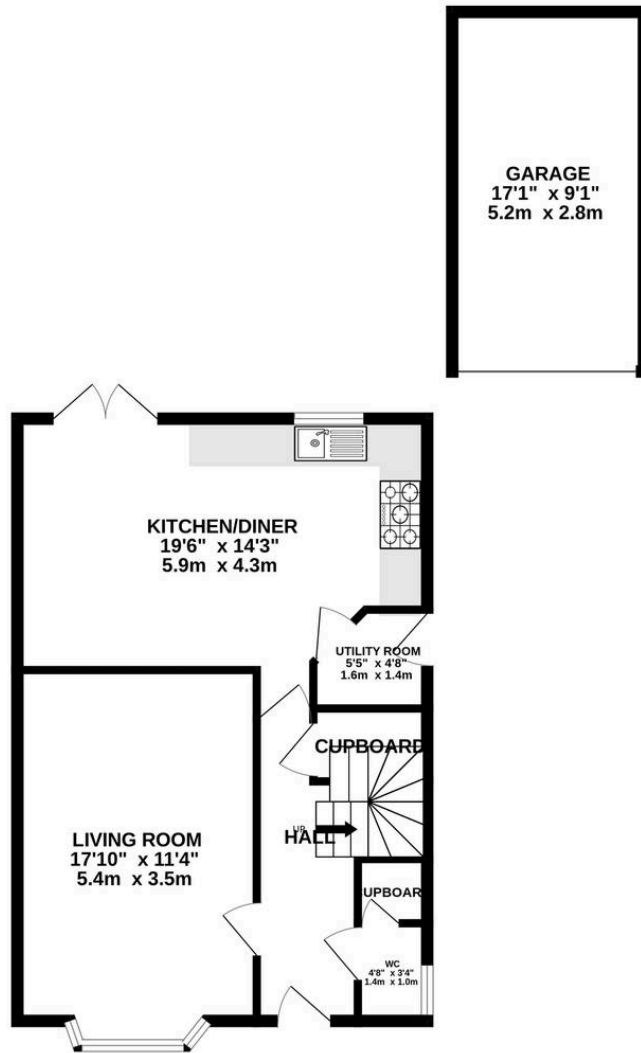
2 Parking Spaces



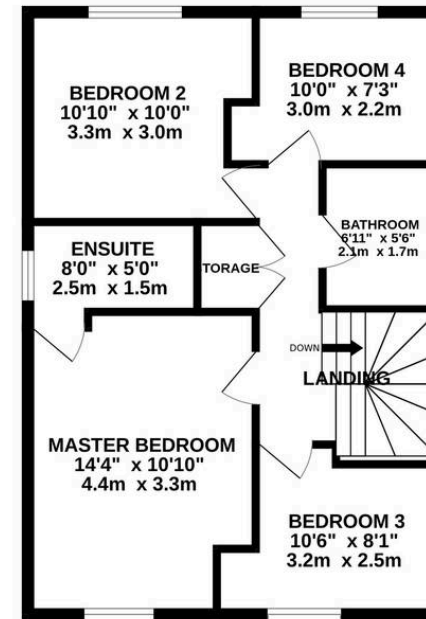




GROUND FLOOR
719 sq.ft. (66.8 sq.m.) approx.



1ST FLOOR
557 sq.ft. (51.7 sq.m.) approx.



TOTAL FLOOR AREA : 1276 sq.ft. (118.5 sq.m.) approx.

Whilst every attempt has been made to ensure the accuracy of the floorplan contained here, measurements of doors, windows, rooms and any other items are approximate and no responsibility is taken for any error, omission or mis-statement. This plan is for illustrative purposes only and should be used as such by any prospective purchaser. The services, systems and appliances shown have not been tested and no guarantee as to their operability or efficiency can be given.
Made with Metropix ©2026





Hawthorn and Co

Harbury - CV33 9NR

01926 919553

hello@hawthornandco.co.uk

<http://www.hawthornandco.co.uk>

