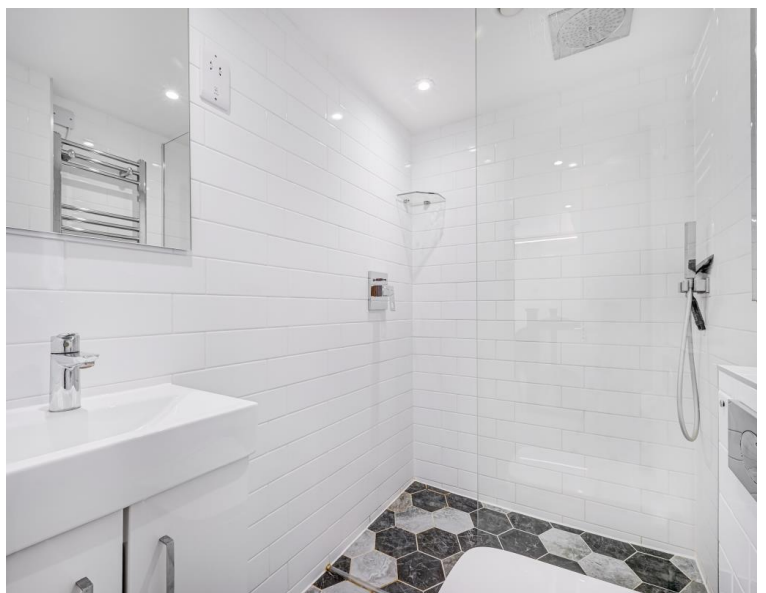




Marylebone Road, London NW1

Price £750 per week - Part Furnished







Description

A modern duplex apartment located in a popular development with concierge just a short walk to Marylebone High Street. The apartment has a reception room with an open-plan modern kitchen, a spacious double bedroom and two bathrooms.

Marathon House is a popular, secure development with a concierge service located just a short walk to Baker Street, Marylebone High Street and The Regents Park.

Set over two floors and furnished beautifully throughout, the entry floor has a large double bedroom with an en-suite bathroom and built-in wardrobes, the 1st floor has bright reception room, a fully fitted open-plan kitchen and a shower room and the apartment has wooden flooring throughout.

Council tax band: E. Rent is payable on a monthly basis, and you may be required to pay more than a month's rent in advance for tenancies with annual rents exceeding £100,000. You will be required to pay a 1 week holding deposit following a successful offer. Tenancies with annual rents up to £50,000 will require a 5 weeks' security deposit, while those exceeding this threshold will require a 6 weeks' deposit. Utility bills, council tax, telephone line and broadband are not included in the rent. As well as paying the rent, you may also be required to make some additional permitted payments. If your tenancy does not qualify as an APT, additional fees may apply. Please visit jll.co.uk/fees for details of fees that may be payable when renting a property. To check broadband and mobile phone coverage please visit Ofcom here ofcom.org.uk/phones-telecoms-and-internet/advice-for-consumers/advice/ofcom-checker

- Duplex Apartment
- Concierge Service
- Approx. 57sqm / 611sqft
- Open-plan Kitchen
- Furnished
- Wooden Flooring
- Close to Marylebone High Street
- Close to Regents Park
- 24 hour concierge
- Council Tax Band: E

Floorplan

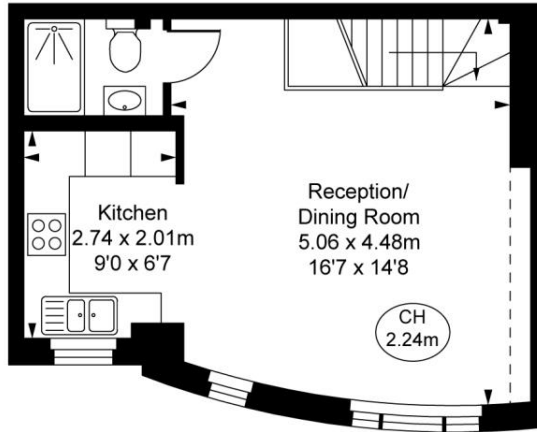
611 sq ft | 57 sq m

Marathon House, Marylebone Road, NW1

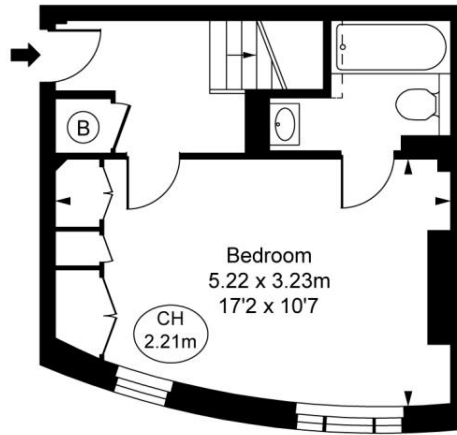
Approximate Gross Internal Area
56.73 sq m / 611 sq ft

(Including restricted height
under 1.5m [])

(CH = Ceiling Heights)



First Floor
Approximate Gross Internal Area
31.34 sq m / 337 sq ft



Ground Floor
Approximate Gross Internal Area
25.40 sq m / 273 sq ft

This plan is not to scale. It is for guidance and not for valuation purposes.
All measurements and areas are approximate only, and have been prepared in accordance with the current edition of the RICS Code of Measuring Practice.
© Fulham Performance

Mayfair and Marylebone
St George Street,
London W1S 2FQ
+44 207 399 5550
mayfair@jll.com

Urban living, your way.

jll.co.uk/residential

© 2019 Jones Lang LaSalle IP, Inc. All rights reserved. All information contained herein is from sources deemed reliable; however, no representation or warranty is made to the accuracy thereof.

