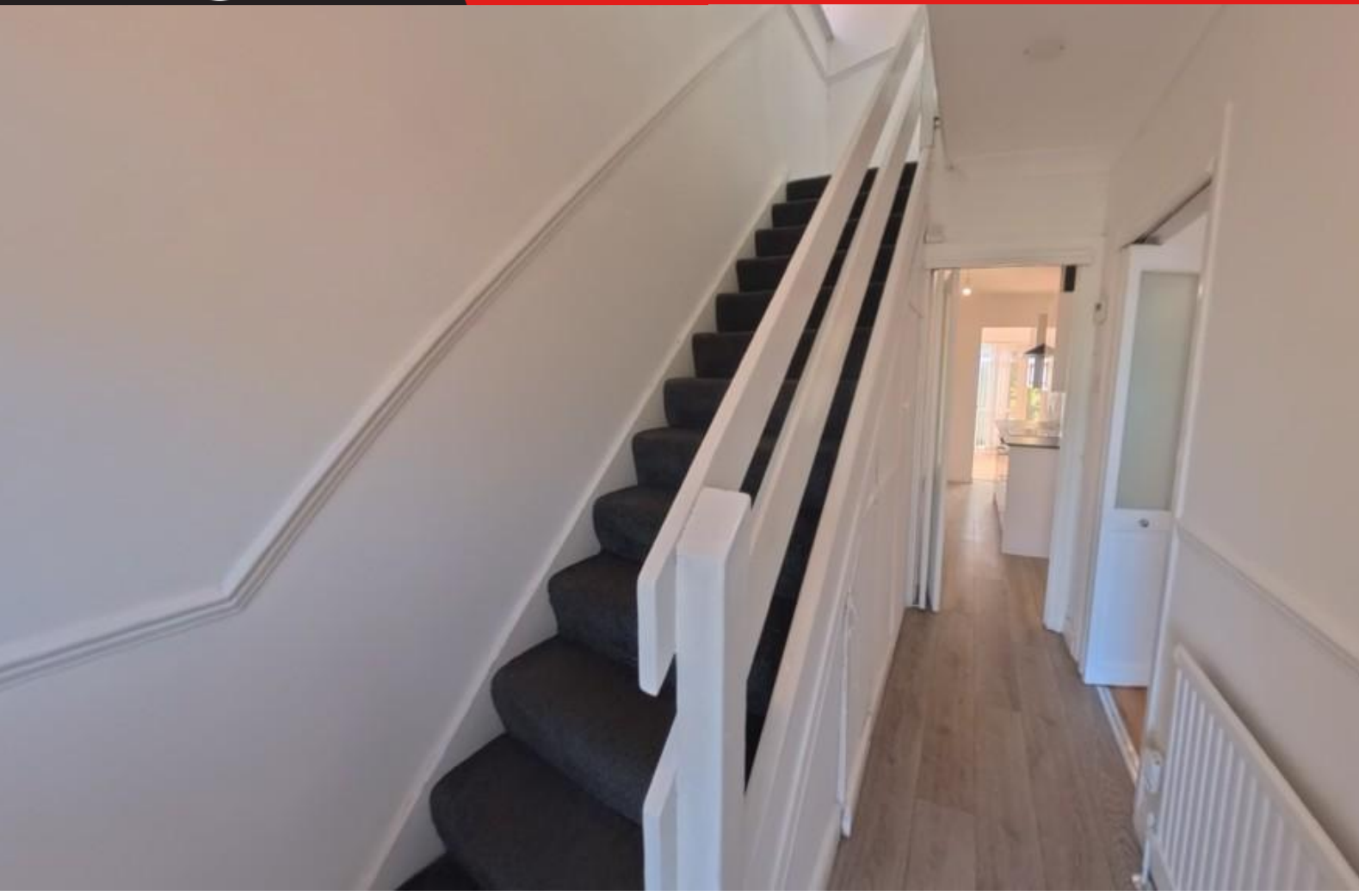




Brightest move

LOCKING ROAD, WESTON-SUPER-MARE,
RENT £1,750 PCM





We are delighted to offer this Four Bedroomed Semi Detached Home set in a Popular location giving excellent access to both Weston & Worle. The property Briefly comprises Lounge/Diner, Rear reception room, Galley Style Kitchen with Range Cooker and Cloakroom to the ground floor. To the first floor there are Three Bedrooms and Family Bathroom with a further bedroom to the top floor. Further benefits include Gas Central Heating, Double Glazing, Front & Rear Gardens, Garage and Driveway for 3/4 cars. AVAILABLE NOW (EPC Rating - E) Sorry NO Pets.

Energy Efficiency Rating

	Current	Potential
<i>Very energy efficient - lower running costs</i>		
(92-100) A		
(81-91) B		
(69-80) C		80
(55-68) D		
(39-54) E	80	
(21-38) F		
(1-20) G		
<i>Not energy efficient - higher running costs</i>		

England, Scotland & Wales

EU Directive 2002/91/EC



Whilst every attempt has been made to ensure the accuracy of the floorplan contained here, measurements of floors, rooms, walls and any other parts are approximate and the responsibility is taken for any error, omission or misstatement. This plan is for illustrative purposes only and should be used as such by any prospective purchaser. The various colours and symbols shown here are not intended to be guaranteed as to their accuracy or otherwise and are given. Made with MetreX CAD23