



APARTMENT 1 WESTBROOK HOUSE 58-60 FOLKESTONE, CT20 2NQ

£1,650 PER MONTH

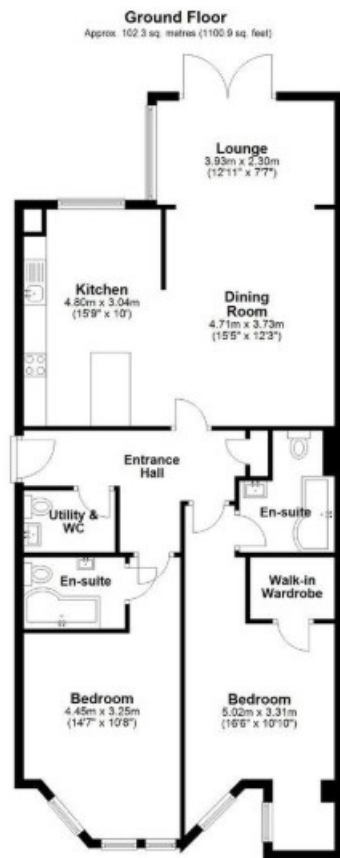
Welcome to this delightful two-bedroom apartment located on Shorncliffe Road in the charming town of Folkestone. This modern property, offers a generous living space of 1,184 square feet, making it an ideal choice for individuals or small families seeking comfort and convenience.

Situated on the ground floor, this self-contained apartment boasts its own private garden, perfect for enjoying the fresh air or hosting gatherings with friends and family. The well-designed layout ensures that every inch of space is utilised effectively, providing a warm and inviting atmosphere throughout.

The property also benefits from allocated parking for 1 car.

**WEST END
ESTATES**

LETTINGS AND PROPERTY MANAGEMENT



Energy Efficiency Rating		
	Current	Potential
Very energy efficient - lower running costs		
(92 plus) A		
(81-91) B		
(69-80) C	76	
(55-68) D		
(39-54) E		
(21-38) F		
(1-20) G		
Not energy efficient - higher running costs		
England & Wales	EU Directive 2002/91/EC	

EPC Rating: C Council Tax Band: D

Agents Note: Whilst every care has been taken to prepare these particulars, they are for guidance purposes only. All measurements are approximate and are for general guidance purposes only and whilst every care has been taken to ensure their accuracy, they should not be relied upon and potential buyers/tenants are advised to recheck the measurements

West End Estates Folkestone
7 Sapper Row
Folkestone
Kent
CT20 3WT

01303 478777
office@westend-estates.co.uk

**WEST END
ESTATES**
LETTINGS AND PROPERTY MANAGEMENT