



15, Jubilee Court

High Street | Billingshurst | West Sussex | RH14 9EF

A spacious ground-floor apartment featuring a generously sized living room with doors opening directly onto a private patio. The patio is surrounded by well-maintained communal lawns and planting, offering a pleasantly secluded feel and an excellent level of privacy. Jubilee Court provides a range of communal facilities including a residents' lounge, a guest suite for visiting friends or relatives, and the support of an on-site house manager available at predetermined times. The apartment itself benefits from a large entrance hall with a deep storage cupboard, a well-proportioned double bedroom with built-in wardrobe, and a bright, comfortable living room. The kitchen is well fitted with a range of units and appliances, while the shower room features a spacious walk-in shower cubicle. For added peace of mind, all rooms are connected to an intercom system providing emergency assistance when required.

01403 786787
billingshurst@fowleronline.co.uk
www.fowleronline.co.uk

Communal entrance door with entry phone system, leading to: Residents Lounge and Managers office. A heated and carpeted hall leads to Number 15.

Personal Front Door

Hall

Emergency pull cord, walk-in storage cupboard also housing hot water tank, access to roof space.

Living Room

Having a southerly aspect with double glazed door opening directly onto a patio, further double glazed window to side, modern night storage heater plus an electric panel heater, TV point, telephone point, emergency pull cord, fire surround with electric fire. Double doors opening to: -

Kitchen

Worksurface with inset stainless steel sink unit with base cupboard under, freestanding washer/dryer, further 'L' shaped worksurface with inset four ring electric hob and free-standing fridge and freezer, base cupboard and drawer, cooker unit housing integrated oven with storage above and below, range of matching eye-level units, extractor hood over hob, double glazed window, wall-mounted electric heater, emergency pull cord.

Bedroom

Open wardrobe, night storage heater, double glazed window, emergency pull cord.

Shower Room

Large shower cubicle with mixer shower, vanity unit with inset sink unit and mixer tap having storage under, mirror, light/shaver point, w.c., heated towel rail, wall-mounted electric heater, extractor fan, emergency pull cord.

Outside

Pleasant, landscaped gardens are found around Jubilee Court.

Parking.

Communal parking spaces are found at the front of the development.

Council Tax Band= C

Bi-annual Ground Rent= £395.94

Current Annual Maintenance= approx. £3000

Length of Lease= 103 years remaining.

**EPC
RATING
D**



Fowlers 74 High Street, Billingshurst, West Sussex, RH14 9QS

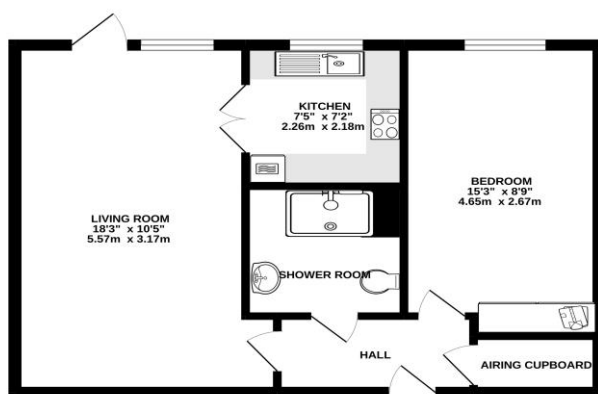
www.fowleronline.co.uk

billingshurst@fowleronline.co.uk

01403 786787



GROUND FLOOR



Important Notice

1. Fowlers wish to inform all prospective purchasers that these sales particulars do not form part of any contract and have been prepared in good faith to give a fair overall viewing of the property.
2. We have not undertaken a structural survey, nor tested that the services, appliances, equipment or facilities are in good working order.
3. Fowlers cannot verify that any necessary consents have been obtained for conversions, extensions and other alterations such as underpinning,

garaging and conservatories etc. Any reference to such alterations is not intended as a statement that any necessary planning or building consents have been obtained and if such details are fundamental to a purchase, then prospective buyers should contact this office for further information or make further enquiries on their own behalf.

4. Any area, boundary, distances or measurements referred to are given as a guide only and should not be relied upon. If such details are fundamental to a purchase, please contact this office for further information.

5. The photographs shown in these details show only certain aspects of the property at the time they were taken. Certain aspects therefore may have changed and it should not be assumed that the property remains precisely as displayed in the photographs.
6. Fowlers cannot verify whether the property and its grounds are subject to any restrictive covenants, rights of way, easements etc, and purchasers are advised to make further enquiries to satisfy themselves on these points.