



The Chapel  
Puddletown  
£450,000



The Chapel' is a unique and beautifully converted character home that seamlessly blends historic charm with contemporary living. Retaining some of its original features, this striking property showcases magnificent exposed timber beams throughout, complemented by distinctive features including a stained-glass window and an impressive open staircase. The accommodation is thoughtfully arranged with an effortless open-plan flow across the ground floor, leading out to an exceptional three-tiered garden that enjoys sunlight throughout the day. The property further benefits from a spacious mezzanine bedroom suite, an additional double bedroom, and high-specification fixtures and fittings throughout. Offering an enchanting and highly comfortable rural retreat. EPC rating D.

Nestled in the Piddle Valley, the village of Puddletown boasts a range of local facilities, including St Mary's Church, a wonderful village shop with Post Office, The Blue Vinney public house, GP Surgery with dispensary, a vets, a book shop and access to Puddletown forest for walking. The county town of Dorchester is approximately 5 miles to the south and provides an extensive range of shopping, business and recreational facilities. Other towns within easy reach include the coastal town of Weymouth, about 13 miles, Sherborne, about 18 miles and Blandford Forum, about 12 miles. Puddletown is host to two well received schools, Puddletown First School and Puddletown Middle school and the village is also within the catchment for Thomas Hardy School, Dorchester.



Enter through the impressive original wooden Chapel doorway into a useful porch and central entrance hall, which provides direct access to a convenient downstairs w/c. A further door opens into an expansive reception room featuring an attractive log burner, enhancing the character and charm of the property, the room further benefits from built-in bookshelves, and an elegant staircase leading to the first floor. This living space flows seamlessly into a bright kitchen/diner finished with attractive oak flooring and marble-effect countertops. Integral appliances include a five-ring induction hob, dishwasher, wine cooler, and a versatile double oven setup, alongside space for a washing machine and freestanding fridge-freezer. Stretching to the rear, the modern kitchen/diner opens into a lovely conservatory, enhancing the living space and bathing in plentiful natural light.

The feature open staircase ascends to a large first-floor mezzanine landing that offers plenty of room for furniture while overlooking the living area below. This leads to a stylish family bathroom beautifully finished with marble-effect tiling, exposed beams, a panel-enclosed bath with a shower attachment, a w/c, and a wash hand basin. The first-floor hosts two double bedrooms, including a primary room with built-in wardrobes and a private en-suite shower room, and a second bedroom accented by a historic stained-glass window. Original exposed timber beams run across the entirety of the upper floor, beautifully preserving the building's unique history.

Outside, French doors from both the living area and conservatory open onto a stone patio perfect for dining and entertaining. From here, steps lead up to two further levels of beautifully landscaped gardens filled with mature shrubs, flowers, and trees. At the very top, a raised decking area is ideally positioned to enjoy its southerly aspect sun.

### Agents Notes:

The property benefits from rights of access over neighboring land for maintenance of drainage pipes and contributes one-third towards the shared septic tank costs. Please note that development proposals are being considered for the adjoining field to the rear. Further details are available within the Puddle town Neighborhood Plan.

<https://www.dorsetcouncil.gov.uk/w/puddletown-neighbourhood-plan>

### Services:

Mains electricity and water are connected.  
Oil central heating and wood burner.  
The property is connected to communal septic tank.

### Local Authorities:

Dorset Council  
County Hall  
Colliton Park  
Dorchester  
Dorset  
DT1 1XJ

Tel: 01305 211970

Council Tax Band E.

### Broadband:

At the time of the listing, standard, superfast and ultrafast broadband are available.

Mobile phone service varies dependent upon your provider.

For up-to-date information please visit:

<https://checker.ofcom.org.uk>

### Flood Risk:

Enquire for up-to-date details or check the website for the most current rating.

<https://check-long-term-floodrisk.service.gov.uk/risk#>

Ground Floor  
890 ft<sup>2</sup>

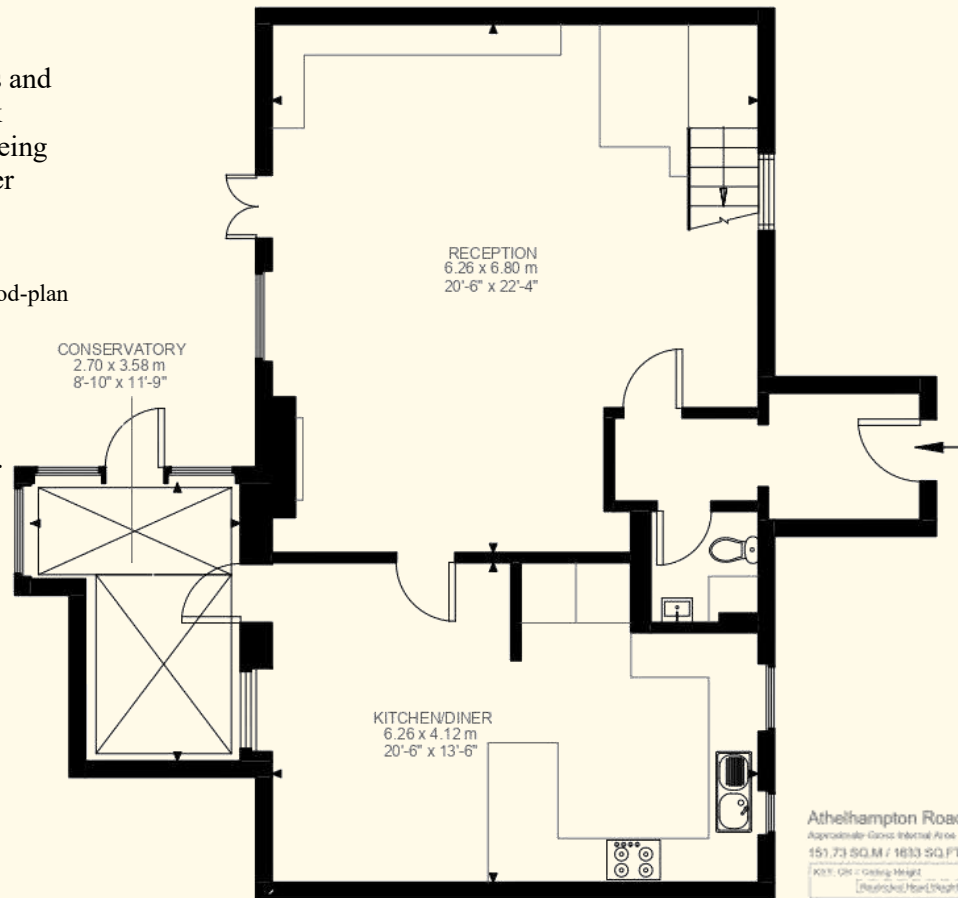
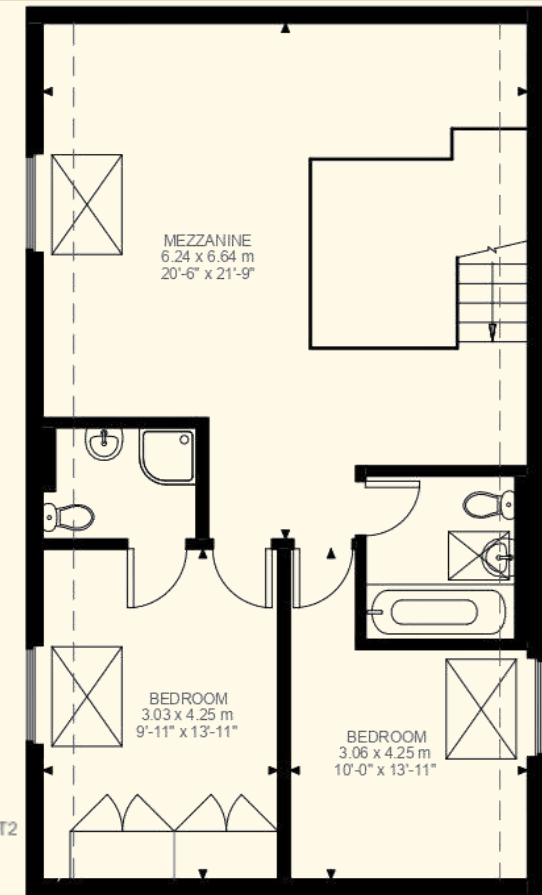


Illustration for identification purposes only. Not to scale.  
Floor Plan Drawn According To RICS Guidelines.

First Floor  
744 ft<sup>2</sup>



### Stamp Duty:

Stamp duty is likely to be payable on this property dependent upon your circumstance.

Please visit the below website to check this.

<https://www.tax.service.gov.uk/calculate-stamp-duty-land-tax-#!/intro>

**Important notice: Parkers notify that:** All sales particulars are prepared to the best knowledge and information supplied/obtained and exist to give a fair representation of the property. The purchaser(s) shall be deemed to have satisfied themselves as to the description of the property. Sales particulars should not be relied upon or used as a statement of fact. All measurements are approximate. Text, photographs and plans are for guidance purposes only and not necessarily comprehensive. It should not be assumed that the property has all necessary planning: building regulation or other consent. Parkers have not tested any services, equipment or facilities. Purchasers must satisfy themselves by inspection or otherwise.

24 Peverell Avenue West, Poundbury, Dorchester, Dorset DT1 3SU

Tel: 01305 340860 Email: [enquiries@parkersproperty.com](mailto:enquiries@parkersproperty.com) Web: [www.parkersproperty.com](http://www.parkersproperty.com)