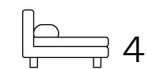




Living
made
better

Sherwood Road
Hampton Hill, TW12 1DF



Offers In Excess Of £1,300,000

Sherwood Road, Hampton Hill, TW12 1DF

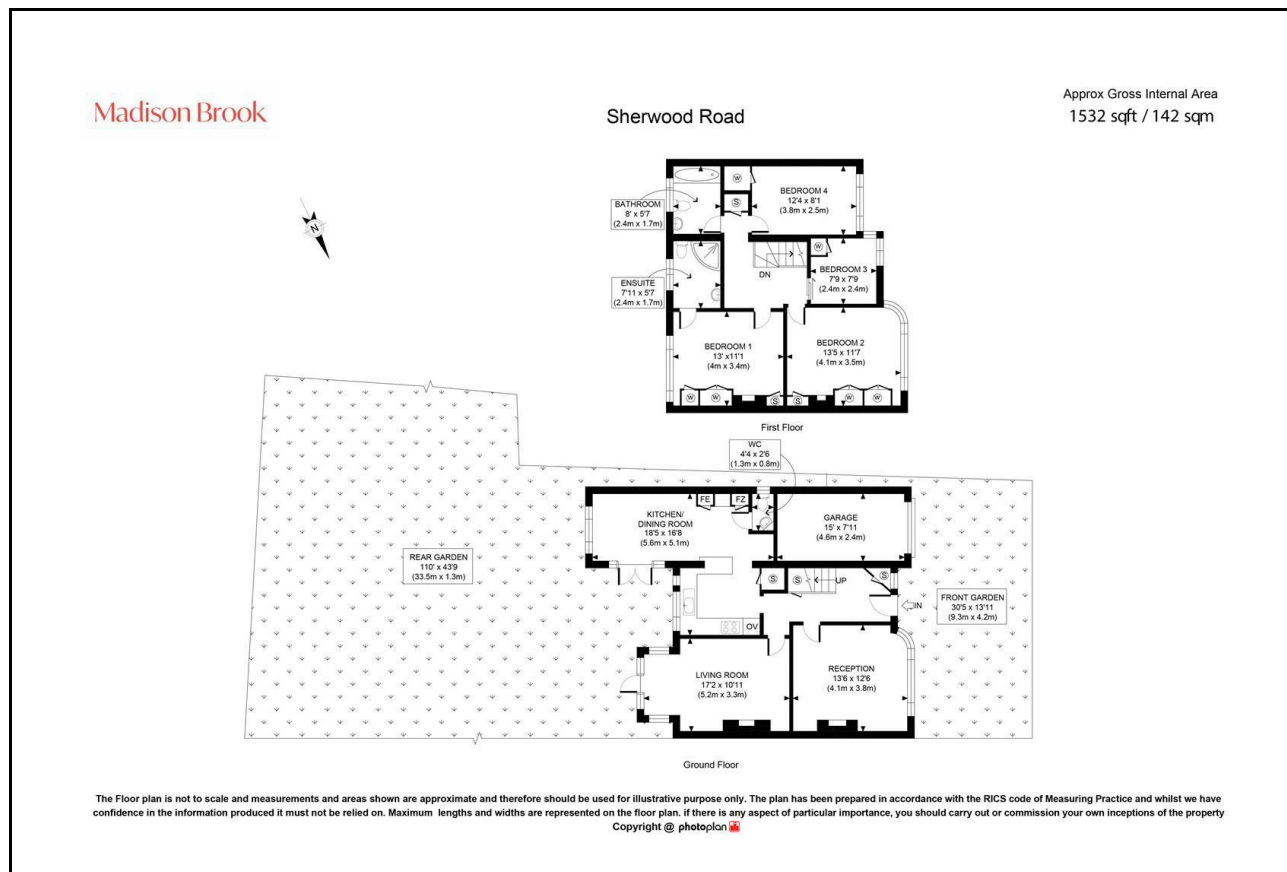
Madison Brook

Property Summary

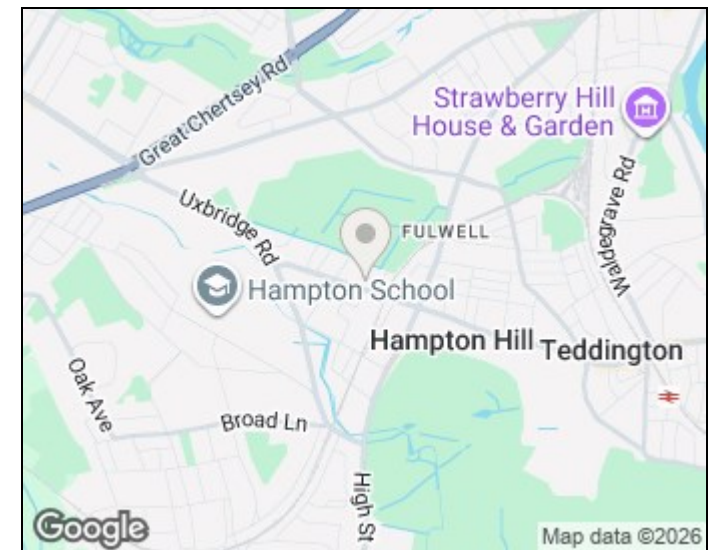
A charming 1930s Art Deco-style family home set on a highly sought-after road close to Hampton Hill. The property offers four good-sized bedrooms, two bathrooms, two generous reception rooms and a spacious kitchen and dining room. Period features include curved Crittall windows, while a ground-floor WC and integral garage with utility area add convenience. Externally, the house benefits from both front and rear gardens, with the rear garden offering excellent space and potential for extension, subject to consent. Residents also benefit from private garage and driveway parking.

Ideally located moments from Hampton Hill High Street, Hampton train station, Bushy Park and a selection of highly regarded state and private schools, this is a superb opportunity to acquire a spacious family home in a prime location.

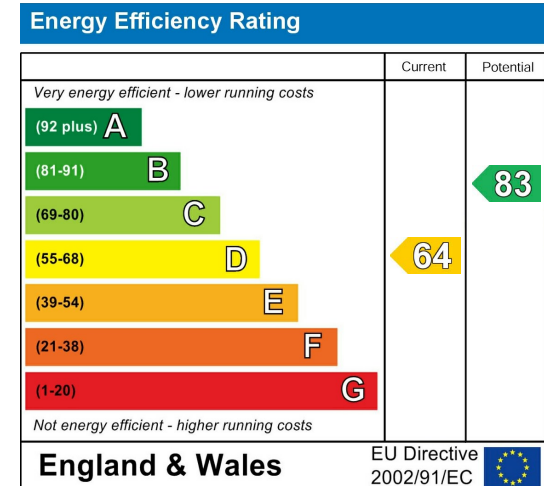
Floorplan



Area Map



Energy Efficiency Graph



103 High Street, Hampton Hill, Hampton, TW12 1NJ

Tel: 020 3946 6700 Email:
hamptonhill@madisonbrook.com
<https://madisonbrook.com/>

These particulars, whilst believed to be accurate are set out as a general outline only for guidance and do not constitute any part of an offer or contract. Intending purchasers should not rely on them as statements of representation of fact, but must satisfy themselves by inspection or otherwise as to their accuracy. No person in this firm's employment has the authority to make or give any representation or warranty in respect of the property.