



**Price**  
**£375,000**

**Freehold**

3x  1x  2x 

**Dunkirk Close,  
Gravesend, Kent, DA12**

**OVER 60?**

Secure this property  
for up to **59% less!**

*Wards*  
Helping you move forwards



## Main features

- A fabulous family home with easy access to local amenities
- Quiet cul-de-sac
- No need for any DIY in this house
- Well presented throughout
- A peaceful outlook to the front

## Accommodation

### GROUND FLOOR

Entrance Hall  
 Lounge : 19'4 into bay x 13'2 (5.90m x 4.02m)  
 Dining Area: 11'2 x 7'5 (3.41m x 2.26m)  
 Kitchen : 9'8 x 8'4 (2.95m x 2.54m)

### FIRST FLOOR

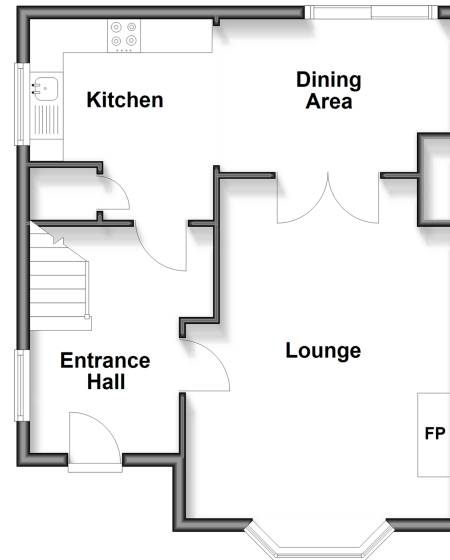
Landing  
 Bedroom 1: 14'6 x 11'2 (4.42m x 3.41m)  
 Bedroom 2: 12'7 x 9'7 (3.84m x 2.92m)  
 Bedroom 3: 7'1 x 6'6 (2.16m x 1.98m)  
 Bathroom

### OUTSIDE

Driveway  
 Rear Garden

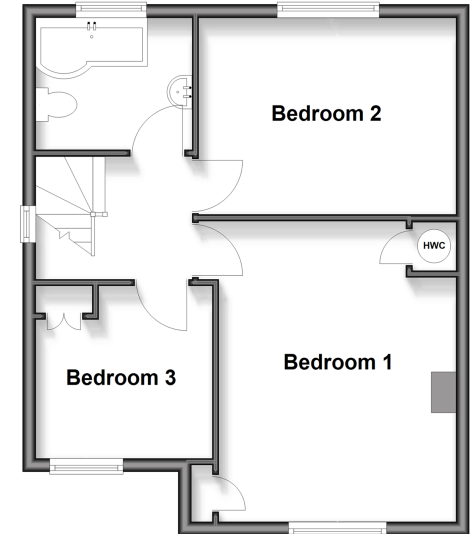
### Ground Floor

Approx. 45.1 sq. metres (485.1 sq. feet)



### First Floor

Approx. 45.3 sq. metres (487.2 sq. feet)



Call Gravesend - 01474 352417 ■ [wardsofkent.co.uk](http://wardsofkent.co.uk)

■ Legal advice should be taken to verify fixtures/fittings, planning, alterations and/or lease details  
 ■ Through a Homewise Home For Life Plan people aged 60+ can secure this property for up to 59% less, by purchasing a Lifetime Lease

■ Appliances & services are untested, dimensions are approximate and floor plans are not to scale



11140891/20260228/MM/KG