



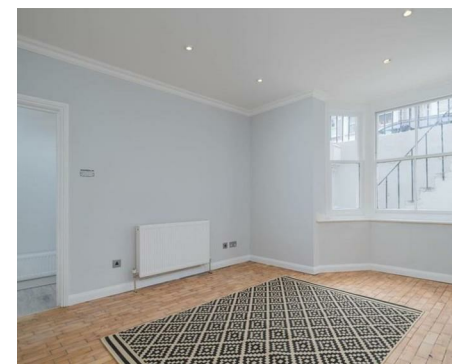
NEWINGTON  
LONDON

2 Bedrooms

Apartment

Located in London

£695 Per Month



info@newingtonstates.com

<http://www.newingtonstates.com>

020 7724 2233



Newington Estates are delighted to present you this bright and spacious lower ground two bedroom mansion apartment situated in the Marylebone moments from Edgware Road tube station and very close to Marylebone Station. This apartment is on the lower ground floor and comprises entrance hall, two double bedrooms, two full bathrooms with one being an en-suite, spacious reception room with high ceilings and wood flooring, and a modern fully fitted kitchen.

Transport access can be found at Edgware Road, Marylebone, and Baker Street stations. Local eateries, cafes and coffee shops can also be found close by in Marylebone Village and Edgware Road. Hyde Park is only a short walk away. EPC RATING: C

### Energy Efficiency Rating:

Agents Note: Whilst every care has been taken to prepare these particulars, they are for guidance purposes only. All measurements are approximate and are for general guidance purposes only and whilst every care has been taken to ensure their accuracy, they should not be relied upon and potential buyers/tenants are advised to recheck the measurements.

# NEWINGTON LONDON

60 Upper Montagu Street

London

W1H 1SN

020 7724 2233

[info@newingtonestates.com](mailto:info@newingtonestates.com)

<http://www.newingtonestates.com>