



**Connells**

The Terrace  
Canterbury



### Property Description

Located in a highly sought-after residential setting, this impressive four-bedroom detached home offers generous accommodation and a unique garden. The property welcomes you with a bright entrance way, to the left is the large open-plan living room with large windows and double doors leading to the garden, creating a fantastic space for relaxing and entertaining.

The home also benefits from a separate dining room and separate utility room with downstairs WC. To the rear, the well-proportioned kitchen offers ample space for busy family life with plenty of storage space too.

Upstairs, the property offers four well-sized bedrooms. The master bedroom is the star of the show upstairs, with an en-suite and excellent proportions. The three other bedrooms also provide spacious accommodation. A modern family bathroom completes the first floor.

Externally, the property continues to impress. The large garage provides storage space, while the driveway offers space suitable for two cars. The standout feature of the home is the beautiful 3-piece garden. There is a woodland-style area complete with small treehouse which children will love. The middle offers a dedicated vegetable patch and greenhouse, ideal for anyone who enjoys gardening. The lower opens onto a generous lawned area with deck that benefits from plenty of sunshine.

Call the Branch to book your viewing today!



## Porch

## Entrance Hall

## Lounge

17' 1" x 12' ( 5.21m x 3.66m )

## Family Area

17' x 14' 1" ( 5.18m x 4.29m )

## Dining Room

15' 8" x 8' 7" ( 4.78m x 2.62m )

## Kitchen

15' 1" x 8' 10" ( 4.60m x 2.69m )

## Utility Room

8' 10" x 8' 5" ( 2.69m x 2.57m )

## Garage

15' 8" x 8' 5" ( 4.78m x 2.57m )

## Landing

## Bedroom One

18' 1" Max x 16' 8" Max ( 5.51m Max x 5.08m Max )

## En Suite Bathroom

## Bedroom Two

17' 2" x 10' 7" ( 5.23m x 3.23m )

## Bedroom Three

13' 8" x 10' 7" ( 4.17m x 3.23m )

## Bedroom Four

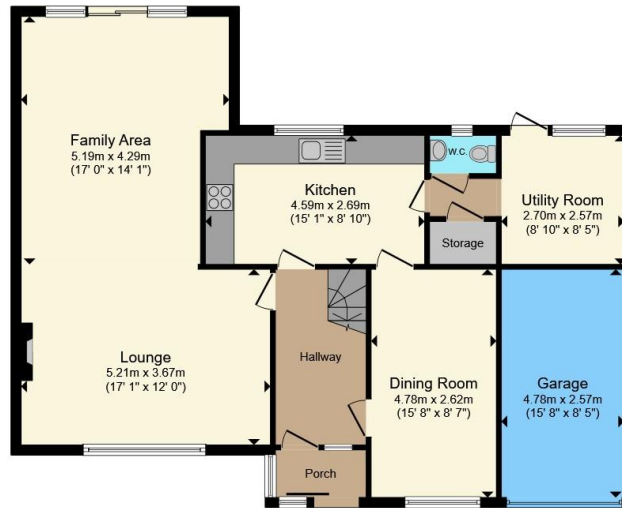
11' 5" x 8' 2" ( 3.48m x 2.49m )

## Family Bathroom

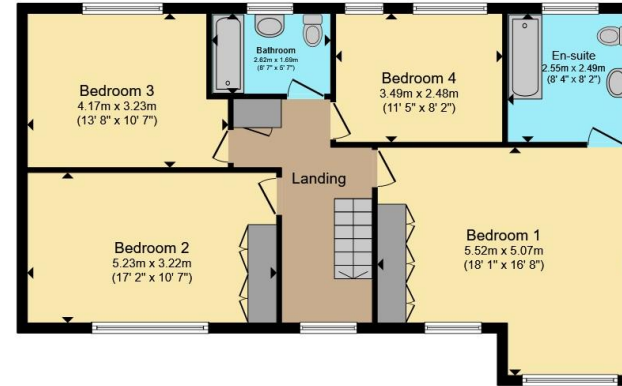








**Ground Floor**



**First Floor**

Total floor area 185.0 m<sup>2</sup> (1,991 sq.ft.) approx

This floor plan is for illustrative purposes only. It is not drawn to scale. Any measurements, floor areas (including any total floor area), openings and orientation are approximate. No details are guaranteed, they cannot be relied upon for any purpose and they do not form part of any agreement. No liability is taken for any error, omission or misstatement. A party must rely upon its own inspection(s). Powered by [www.propertybox.io](http://www.propertybox.io)



To view this property please contact Connells on

**T 01227 764 720**  
**E [canterbury@connells.co.uk](mailto:canterbury@connells.co.uk)**

29-30 Watling Street  
 CANTERBURY CT1 2UD

EPC Rating: Council Tax  
 Awaited Band: F

Tenure: Freehold

**view this property online [connells.co.uk/Property/CBY407045](http://connells.co.uk/Property/CBY407045)**



1. MONEY LAUNDERING REGULATIONS Intending purchasers will be asked to produce identification documentation at a later stage and we would ask for your co-operation in order that there will be no delay in agreeing the sale. 2. These particulars do not constitute part or all of an offer or contract. 3. The measurements indicated are supplied for guidance only and as such must be considered incorrect. Potential buyers are advised to recheck measurements before committing to any expense. 4. We have not tested any apparatus, equipment, fixtures, fittings or services and it is in the buyers interest to check the working condition of any appliances.

Connells Residential is registered in England and Wales under company number 1489613, Registered Office is Cumbria House, 16-20 Hockliffe Street, Leighton Buzzard, Bedfordshire, LU7 1GN. VAT Registration Number is 500 2481 05.

**See all our properties at [www.connells.co.uk](http://www.connells.co.uk) | [www.rightmove.co.uk](http://www.rightmove.co.uk) | [www.zoopla.co.uk](http://www.zoopla.co.uk)**

Property Ref: CBY407045 - 0006