



Church Lane, SW17

£750,000

Dexters



Church Lane, SW17

OFFERS IN EXCESS OF

A truly beautiful mid-terraced home in the heart of Tooting Broadway offering an immaculate interior throughout with three generous bedrooms, a spacious reception room opening into a fitted kitchen at the rear with doors out to a private garden.

The property has been meticulously arranged by the current owner and opens onto a sizeable front reception with ample space for seating. To the rear, there is a generous fitted kitchen with wall and base units furnished with solid worktops and doors opening onto a landscaped private garden. Throughout the property there is solid wooden floor.

Over the first floor, there are two spacious double bedrooms with great proportions and built-in fitted wardrobes and a large family bathroom with the top floor occupying a third double bedroom offering a walk in wardrobe space and a three piece en-suite.

Church Lane is conveniently located for the vast shops, bars & restaurants of both Tooting & Balham on the doorstep. Easy access to the wide green open spaces of Tooting Bec Common & transport links of Tooting Bec and Tooting Broadway Underground station are equidistant and a short stroll away.

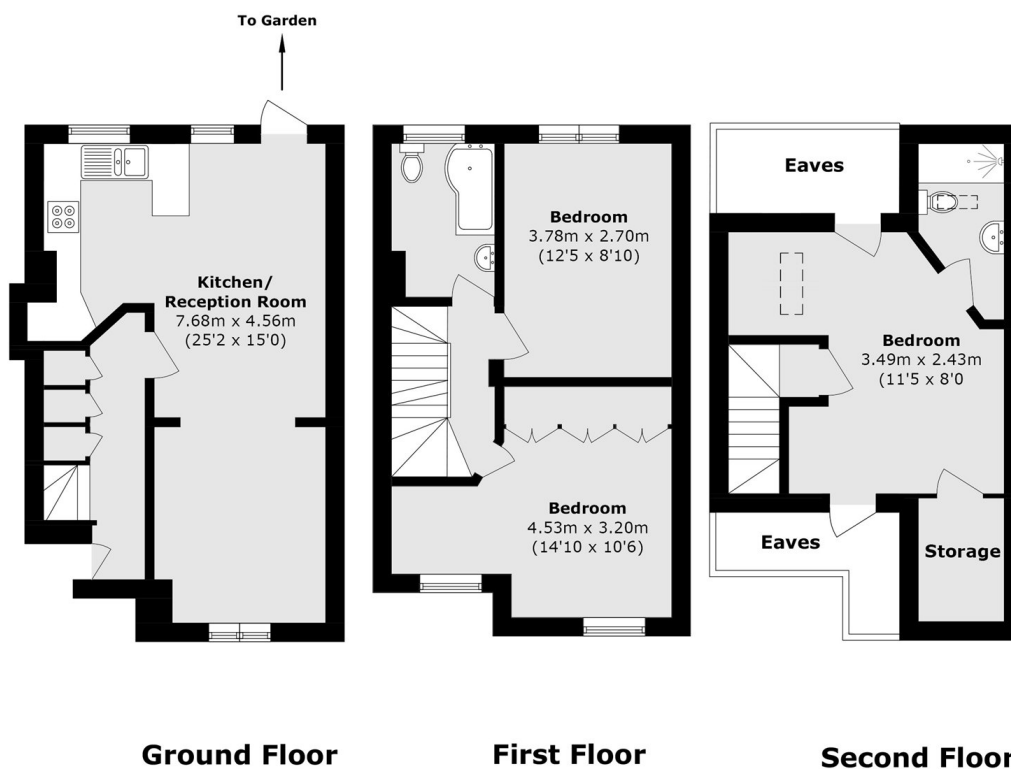
Features

OFFERS IN EXCESS OF

- Freehold Home
- Three Double Bedrooms
- Stunning Interior
- Open Plan Kitchen/Reception
- Landscaped Garden



Church Lane, London, SW17



Total area (approx.): 90.6 sq. m (975.2 sq. ft)

(Excluding Eaves)