

Northbourne Road, SW4

£400,000

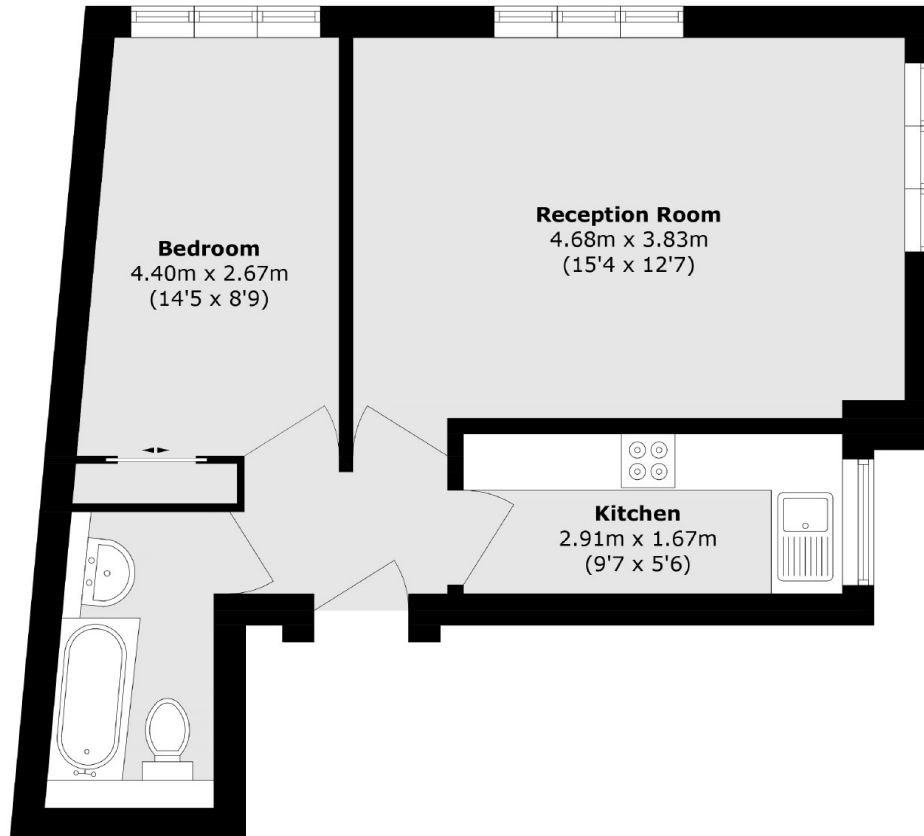
Presented in excellent condition throughout, this naturally bright and spacious apartment offers well-proportioned living in a desirable setting. The accommodation features a generous dual-aspect reception room with ample space for dining, a separate and fully equipped kitchen, a double bedroom with a fitted wardrobe, and a modern bathroom. Offered to the market chain-free and with a share of freehold.

Northbourne Road is a quiet, tree lined street close to Clapham Common and a short distance from the charming shops, bars and restaurants of the Abbeville Village. Clapham High Street (Overground) and Clapham Common (Underground) stations close by serving the West End and City.

Features

- Lateral Apartment
- Large Reception Room
- Separate Kitchen
- Double Bedroom
- Chain Free
- Share Of Freehold

Northbourne Road, London, SW4



Total area (approx.): 43.4 sq. m (467.1 sq. ft)