



Glebelands, Merriott TA16 5RE



welcome to

Glebelands, Merriott

Chain-free opportunity! A beautifully modernized, four-bedroom end-of-terrace home in a sought-after Merriott location. Just minutes from Crewkerne, this spacious property offers four large bedrooms, a garage, and a lovely enclosed garden-perfect family living.



Entrance Hall

As you enter through the front door, the spacious entrance hall welcomes you, with plenty of room for coats, shoes and benefits from a radiator. Stairs ascend to the first floor, offering a light and airy welcome.

Lounge

The generous lounge features two double-glazed windows to the front, filling the room with natural light. It is carpeted throughout and includes an understairs storage, radiators and a gas fireplace, creating a cozy atmosphere.

Kitchen/Diner

The modern kitchen/diner boasts two double-glazed windows to the rear, fitted with a porcelain-style sink, integrated double oven and radiator. There's a tiled splashback, top and bottom kitchen units, and ample space for a large dining table-ideal for entertaining.

Utility Room

Accessed from the kitchen, the utility room offers space to house three white good appliances. Currently washing machine, tumble dryer and freezer. Benefits from a radiator and it houses the boiler. There's a work surface, top and bottom units, and a door leading out to the enclosed garden.

Cloakroom

Conveniently located downstairs, the cloakroom includes a WC, hand basin, and a double-glazed window to the rear.

Landing

Upstairs, the landing is bright, with stairs leading up. All bedrooms are accessed from here.

Bedroom 1

Bedroom one is a large double with two double-glazed windows to the front, plus an ensuite bathroom. The bedroom also benefits from two radiators.

Ensuite

The ensuite has a laminate tile effect flooring, a WC, hand basin, and a shower cubicle, radiator, extractor fan and benefits from double-glazed window to the side.

Bedroom 2

Bedroom Two is another large double, with a radiator and a double-glazed window to the rear.

Bedroom 3

Bedroom Three is a double with a double-glazed window to the front, a radiator plus an over-stairs storage unit and loft access.

Bedroom 4

Bedroom Four is a good sized room with a double-glazed window to the rear and benefits from a radiator.

Family Bathroom

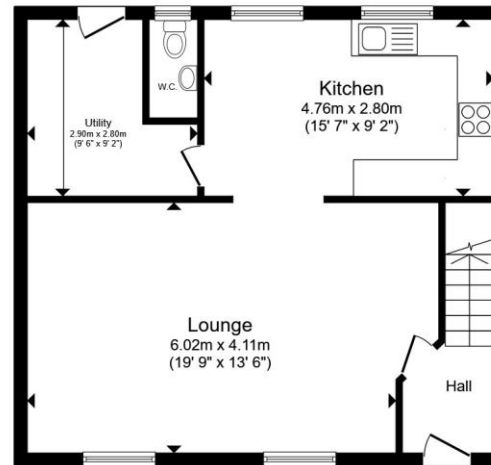
The family bathroom is tiled, with a double-glazed window to the rear, a bath with an electric shower over bath, hand basin, radiator and WC.

Garden

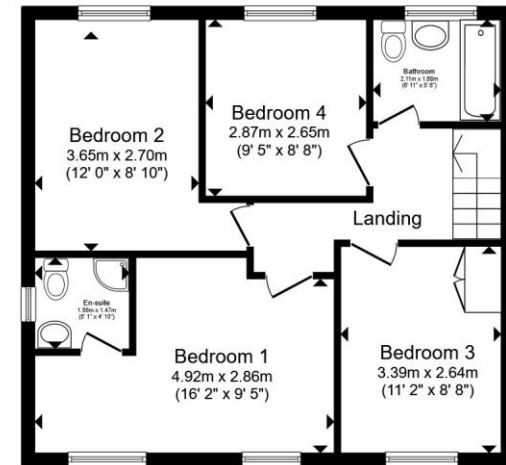
The enclosed rear garden is a private retreat, has the benefit of access to the garage, a beautifully laid patio and a grass area-perfect for family gatherings or a quiet moment outdoors.

Outside

At the front, the property has a good size, well-kept lawned front garden, offering a welcoming curb appeal. An allocated parking space to the front of the house. To the rear, you'll find a single garage, providing secure off-road parking or additional storage space. Alongside this there is also access to the back garden via a side gate.



Ground Floor



First Floor

Total floor area 108.9 m² (1,172 sq.ft.) approx

This floor plan is for illustrative purposes only. It is not drawn to scale. Any measurements, floor areas (including any total floor area), openings and orientation are approximate. No details are guaranteed, they cannot be relied upon for any purpose and they do not form part of any agreement. No liability is taken for any error, omission or misstatement. A party must rely upon its own inspection(s). Powered by www.propertybox.io

 fox & sons



view this property online fox-and-sons.co.uk/Property/CRK104032



welcome to

Glebelands, Merriott

- No Onward Chain
- 4 Double Bedrooms
- Garage
- Utility Room
- En suite

Tenure: Freehold EPC Rating: C
Council Tax Band: C

£350,000



Please note the marker reflects the
postcode not the actual property

view this property online fox-and-sons.co.uk/Property/CRK104032



Property Ref:
CRK104032 - 0004

1. MONEY LAUNDERING REGULATIONS Intending purchasers will be asked to produce identification documentation at a later stage and we would ask for your co-operation in order that there is no delay in agreeing the sale. 2. These particulars do not constitute part or all of an offer or contract. 3. The measurements indicated are supplied for guidance only and as such must be considered incorrect. Potential buyers are advised to recheck measurements before committing to any expense. 4. We have not tested any apparatus, equipment, fixtures or services and it is in the buyers interest to check the working condition of any appliances. 5. Where an EPC, or a Home Report (Scotland only) is held for this property, it is available for inspection at the branch by appointment. If you require a printed version of a Home Report, you will need to pay a reasonable production charge reflecting printing and other costs. 6. We are not able to offer an opinion either written or verbal on the content of these reports and this must be obtained from your legal representative. 7. Whilst we take care in preparing these reports, a buyer should ensure that his/her legal representative confirms as soon as possible all matters relating to title including the extent and boundaries of the property and other important matters before exchange of contracts.

Fox & Sons is a trading name of Sequence (UK) Limited which is registered in England and Wales under company number 4268443, Registered Office is Cumbria House, 16-20 Hockliffe Street, Leighton Buzzard, Bedfordshire, LU7 1GN. VAT Registration Number is 500 2481 05.


fox & sons



01460 73421



Crewkerne@fox-and-sons.co.uk



1-3 Market Square, CREWKERNE, Somerset,
TA18 7LE



fox-and-sons.co.uk