



MovingInn

Flat 1

Gleneldon Road | | London | SW16 2BH

£1,200

 **MovingInn**
sales, lettings & management

Flat 1

Gleneldon Road |
London | SW16 2BH
£1,200

Nestled on the charming Gleneldon Road in Streatham, this delightful studio apartment offers a perfect blend of comfort and convenience. This ground floor property is available for immediate occupancy, making it an ideal choice for those seeking a swift move.

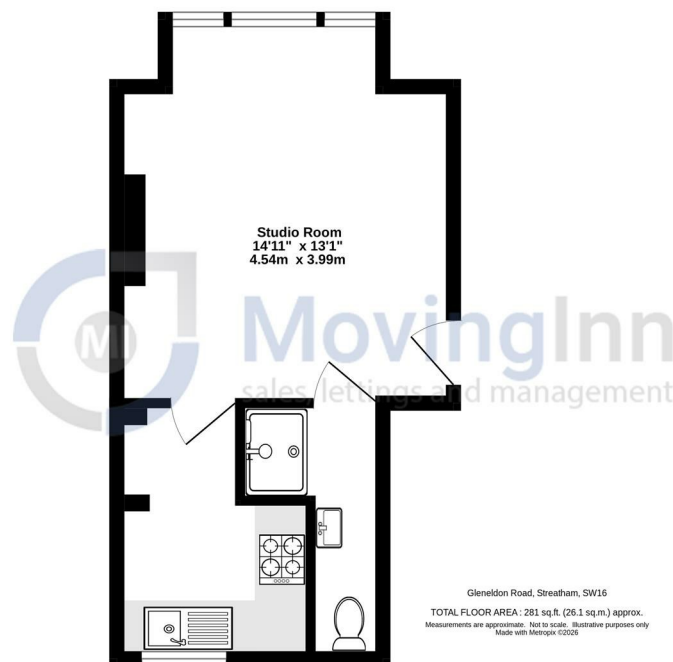
The studio is designed to be bright and airy, creating a welcoming atmosphere that is perfect for both individuals and couples. The separate kitchen provides a functional space for culinary endeavours, ensuring that you have all the amenities you need at your fingertips.

One of the standout features of this property is the inclusion of water rates, which adds to the overall appeal and affordability. The excellent location further enhances the desirability of this studio, with easy access to local amenities and transport links, making it a convenient base for your daily activities.

- Ground floor studio flat
- Separate kitchen area
- Bright and airy space
- Excellent location
- Easy access to transport
- Available immediately
- Water rates included
- Ideal for couple or single person
- Close to local amenities
- Viewing recommended



Ground Floor
281 sq.ft. (26.1 sq.m.) approx.



Gleneldon Road, Streatham, SW16
TOTAL FLOOR AREA: 281 sq.ft. (26.1 sq.m.) approx.
Measurements are approximate. Not to scale. Illustrative purposes only.
Made with MetreX 12/20

Energy Efficiency Rating		
	Current	Potential
Very energy efficient - lower running costs		
(92 plus) A		
(81-91) B		
(69-80) C	71	76
(55-68) D		
(39-54) E		
(21-38) F		
(1-20) G		
Not energy efficient - higher running costs		
England & Wales	EU Directive 2002/91/EC	

Council Tax Band B
EPC Rating C

467 Norwood Road
West Norwood
London
SE27 9DJ
02087610830
dean@movinginn.co.uk
www.movinginn.co.uk