

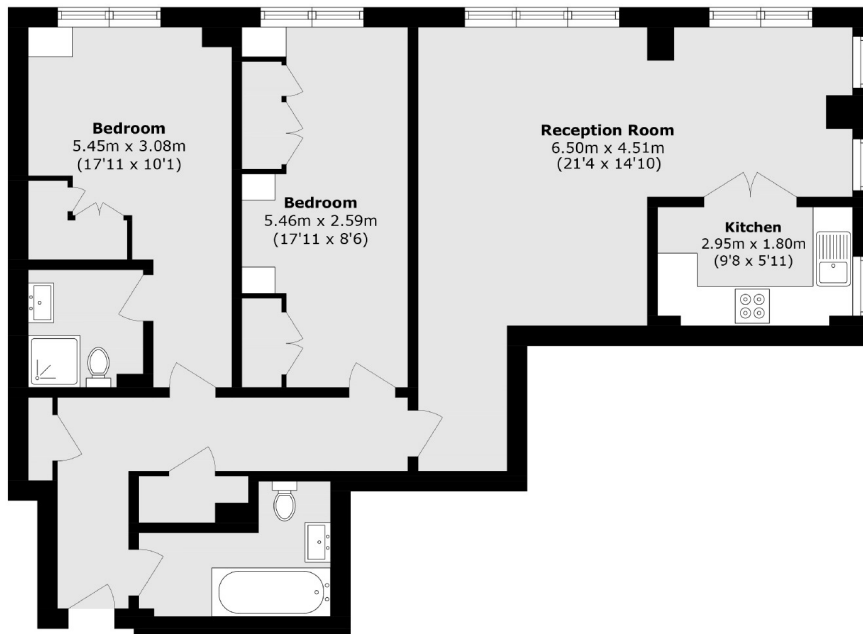


Brunswick Road, W5

£508 pw (£2,200 pcm)

Spacious two bedroom apartment featuring a bright reception with wooden flooring, separate modern kitchen, two bathrooms and access to communal gardens. Includes underground parking, lift access and residents' gym.

Easy access to the A40 and A406 and Hanger Lane Station is a short walk away, while nearby Ealing Broadway offers shops, restaurants and excellent transport links.



Total area (approx.): 81.2 sq. m (874.0 sq. ft)

Robertson Smith & Kempson Ealing Lettings
1 The Broadway,
London, W5 2NT
020 8840 7885
ealinglettings@robertsonsmithandkempson.co.uk

Energy Rating: D. We aim to make our particulars both accurate and reliable. However they are not guaranteed; nor do they form part of an offer or contract. If you require clarification on any points then please contact us, especially if you're traveling some distance to view. Please note that appliances and heating systems have not been tested and therefore no warranties can be given as to their good working order.